



Bolsover Street, W1W

£1,384 Per week

Dexters



Bolsover Street, W1W

A newly refurbished two-bedroom, two-bathroom property arranged across the fifth and sixth floors of this prestigious period building. The property also benefits from an additional study on the top floor, accessed through the walk-in wardrobe, and features high ceilings throughout, offering excellent living and entertaining space. The property has been finished to a high standard with new herringbone flooring throughout, a brand-new modern kitchen, and newly tiled bathrooms with underfloor heating.

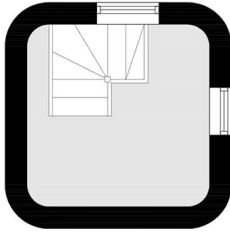
Central Park Lodge is conveniently located just off Great Portland Street and close to the many local shops and restaurants of nearby Marylebone and Oxford Street.

Features

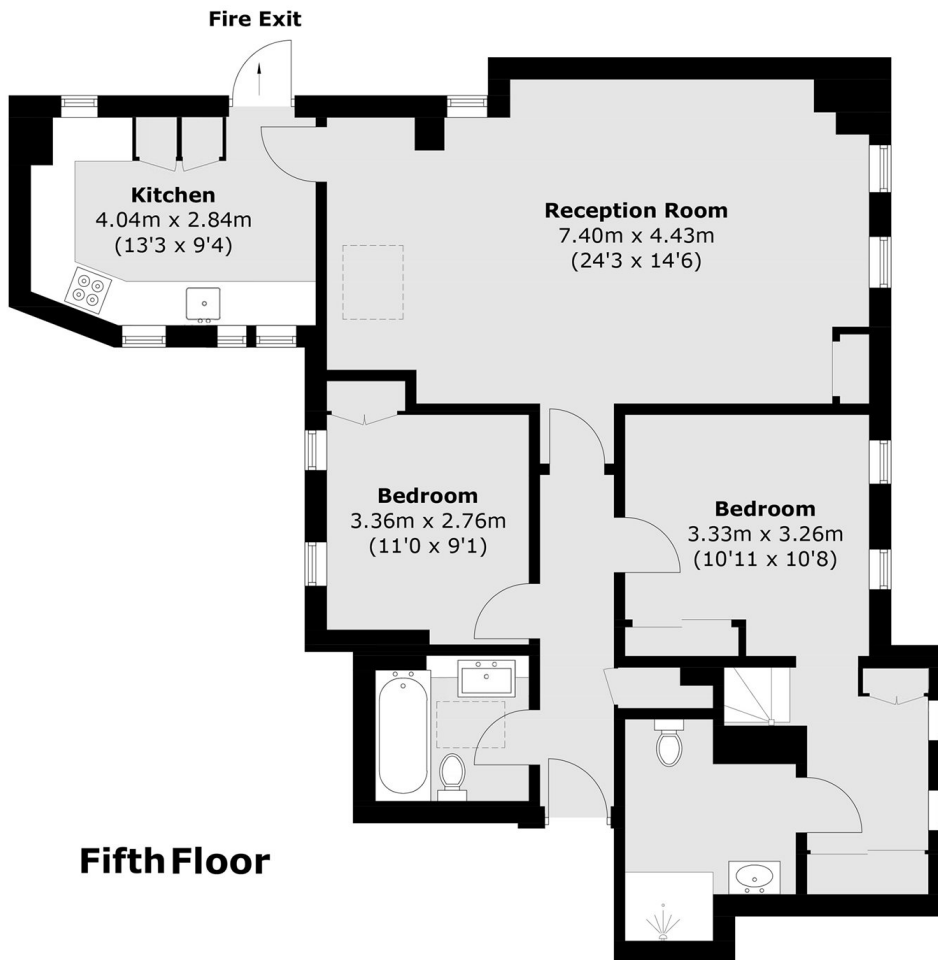
- Brand Newly Refurbished
- Two Bedroom
- Two Bathroom
- Additional Study Space
- Furnished
- Central Location



Bolsover Street, London, W1W



Sixth Floor



Total area (approx.): 95.3 sq. m (1,025.7 sq. ft)