

2
BED

New Build Detached House, Central Location

49, Bolney Avenue, Peacehaven, BN10 8HG

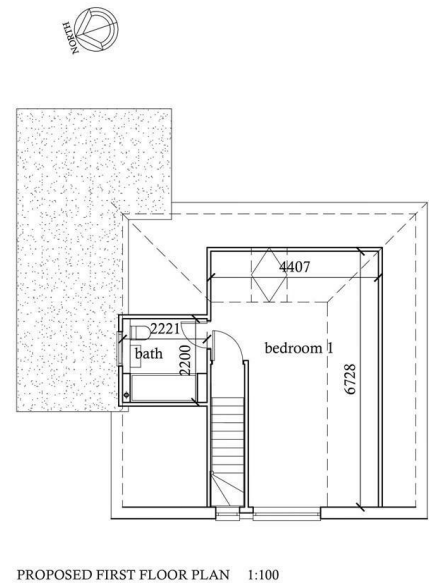
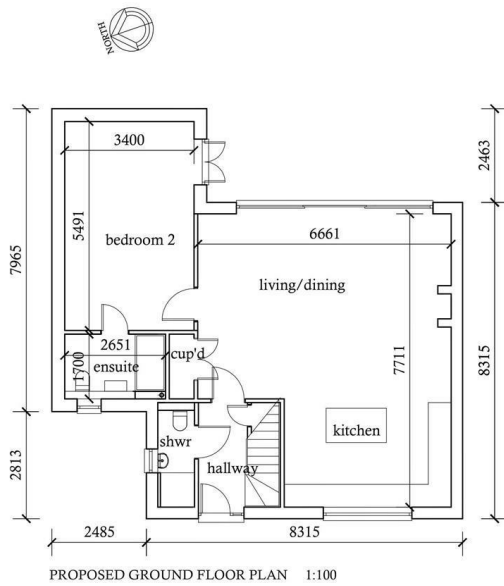


Offers Over £375,000

Freehold

phillipmann
we do more

www.phillipmann.com



inbrief...

New Home - Ready for Occupation

Grab this fantastic opportunity to acquire this BRAND NEW and CONTEMPORARY two bedroom detached house situated in this extremely DESIRABLE location. The property is located within walking distance of the main coastal road, cliff top walks with views of the Sussex Coastline and access to the beach. Furthermore local shops, facilities, local Primary and Secondary Schools and bus routes to Brighton and beyond can also be found close by.

Situated on a level plot, this rarely available new build house ticks all your boxes. Main features include: a low maintenance garden, block paved driveway, two double bedrooms with three bathrooms and a high specification kitchen nestled in a spacious open plan living area. Further conveniences include: a heat pump, underfloor heating and an electric vehicle (EV) charging point.

The front door opens in a inner hallway from which stairs lead to the first floor and ground floor accommodation flows beautifully. The superb open plan living space is incorporates a modern fitted high specification kitchen with a great range of integrated appliances, units for storage and ample work surface. The living space is extremely spacious and you will find plenty of space for a large dining table and chairs as well as all of your soft lounge furnishings. Doors overlook and afford access onto the rear garden. Two spacious double bedrooms are present, both with en-suites. The master suite solely located on the first floor offering versatile accommodation choices. Finally an additional cloakroom with shower completes the property.

If you are looking for a low maintenance spacious property with countless benefits, take advantage of this rare opportunity and book a viewing whilst back available!



EPC - TBC

Council Tax Band - TBC

moreinfo...



Phillip Mann Peacehaven Office
226-230 South Coast Road, Peacehaven, BN10 8JR
01273 586622

To see more details on this & all our homes go to
www.phillipmann.com