



26 Dennor Park, Bristol, BS14 9BY

£365,000

This three-bedroom semi-detached house is offered ****for sale**** in a sought-after cul-de-sac location in Bristol, well placed for local amenities, schools and transport links.

The ground floor offers a bay-fronted sitting room and a good-sized hallway leading through to a dining room with wood-burning stove and French doors opening onto the rear garden. The dining area is open-plan to a replaced kitchen, which includes a built-in oven, integrated dishwasher and a breakfast bar. There is also access to a utility area and ground floor WC.

To the first floor are three bedrooms: two doubles, one of which benefits from built-in wardrobes, and a single bedroom, together with a neutral family bathroom. The property has an EPC rating of D and falls within Council Tax Band C.

Externally, there is a driveway providing parking for up to three vehicles. The mature, enclosed rear garden enjoys a westerly aspect, has side access and a useful storage shed.

Entrance Hall



Kitchen

12'1" x 7'3" max (3.70 x 2.23 max)



Utility & Ground Floor WC

6'0" x 5'6" (1.84 x 1.70)

First Floor Landing



Sitting Room

12'10" x 11'5" (3.92 x 3.49)



Bedroom One

11'7" x 11'4" (3.54 x 3.46)



Dining Room

13'4" x 12'1" (4.08 x 3.70)



Bedroom Two

12'2" x 11'3" (3.73 x 3.45)



Bedroom Three

8'7" x 8'0" (2.64 x 2.44)



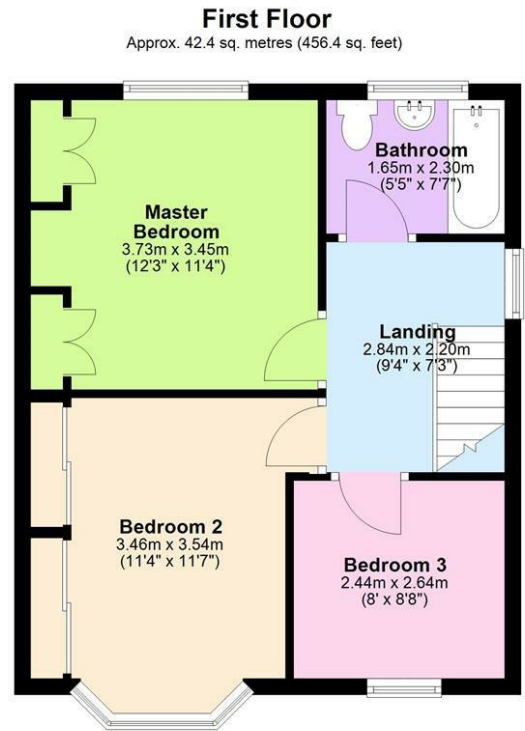
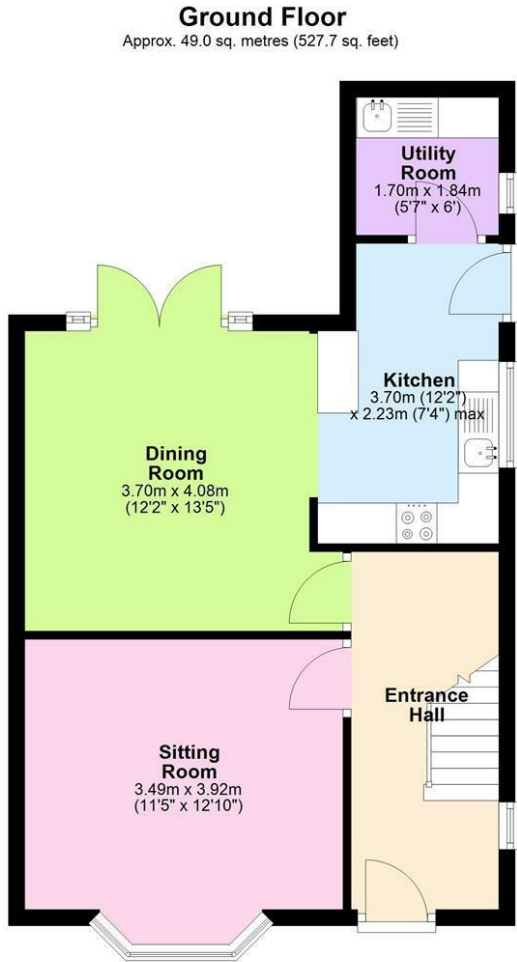
Bathroom

7'6" x 5'4" (2.30 x 1.65)



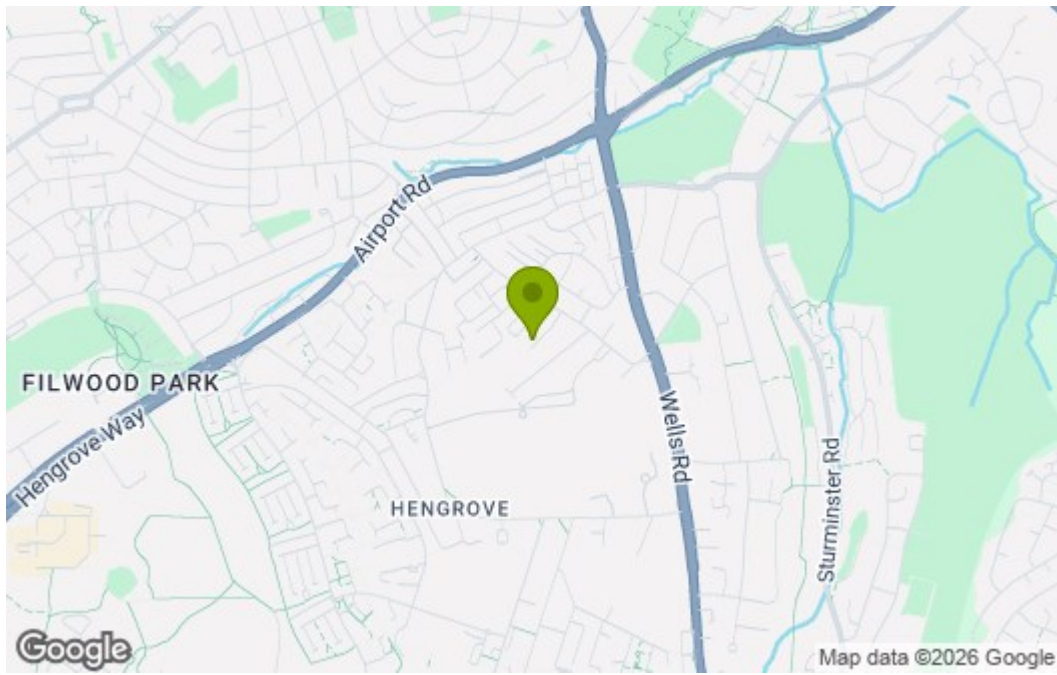
Outside

Floor Plan

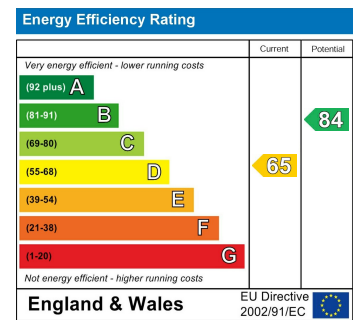


Total area: approx. 91.4 sq. metres (984.1 sq. feet)
26 Dendor Park, Bristol

Area Map



Energy Efficiency Graph



These particulars, whilst believed to be accurate are set out as a general outline only for guidance and do not constitute any part of an offer or contract. Intending purchasers should not rely on them as statements of representation of fact, but must satisfy themselves by inspection or otherwise as to their accuracy. No person in this firm's employment has the authority to make or give any representation or warranty in respect of the property.