



Price

£375,000

Leasehold

2x  2x  1x 

**Buckingham Road,
Epping, Essex, CM16**

OVER 60?

Secure this property
for up to **59% less!**

 **DOUGLAS
ALLEN**
Helping you move forwards



Main features

- Located in an exclusive development in the heart of Epping
- Within walking distance of the station and High Street
- 2 double bedrooms, one with an en-suite shower room
- Allocated car port providing off street parking
- Private balcony

Accommodation

FIRST FLOOR

Entrance Hall

Lounge/Dining Room: 18'7 x 10'5
(5.67m x 3.18m)

Balcony

Kitchen: 8'3 x 6'1 (2.52m x 1.86m)

Bedroom 1 : 15'0 x 8'10 (4.58m x 2.69m)

En-Suite Shower Room

Bedroom 2 : 14'3 x 8'3 (4.35m x 2.52m)

Bathroom

OUTSIDE

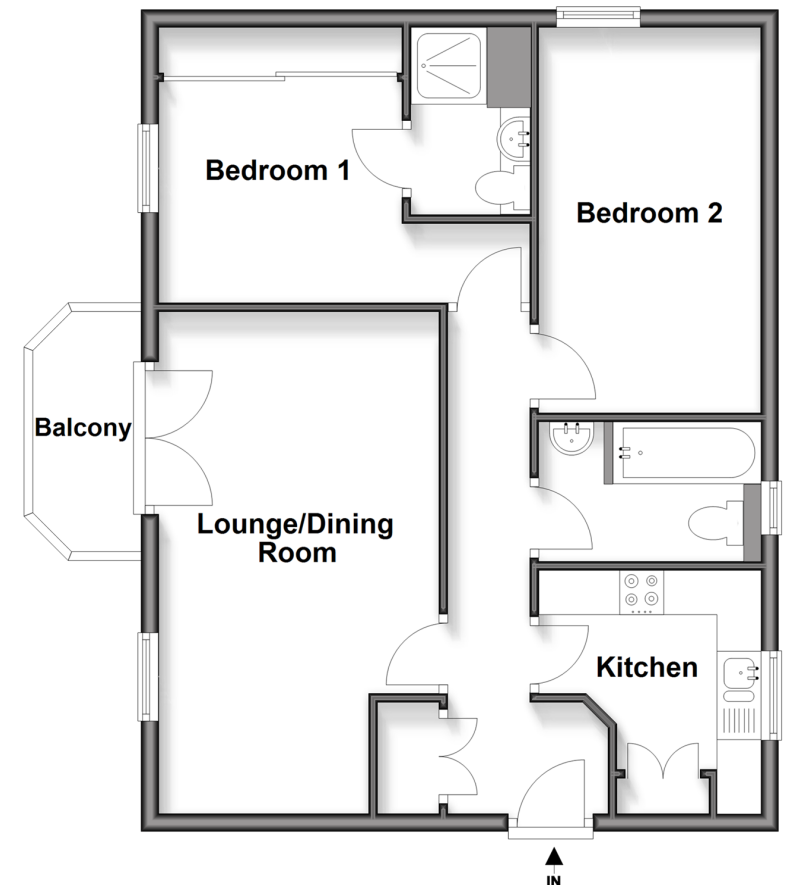
Car Port

Communal Garden

Communal Bike Shed

First Floor

Approx. 64.0 sq. metres (688.6 sq. feet)



Call Epping - 01992 560600 ■ douglasallen.co.uk

- Legal advice should be taken to verify fixtures/fittings, planning, alterations and/or lease details
- Appliances & services are untested, dimensions are approximate and floor plans are not to scale
- Through a Homewise Home For Life Plan people aged 60+ can secure this property for up to 59% less, by purchasing a Lifetime Lease.



51509190/20250806/RG/LA