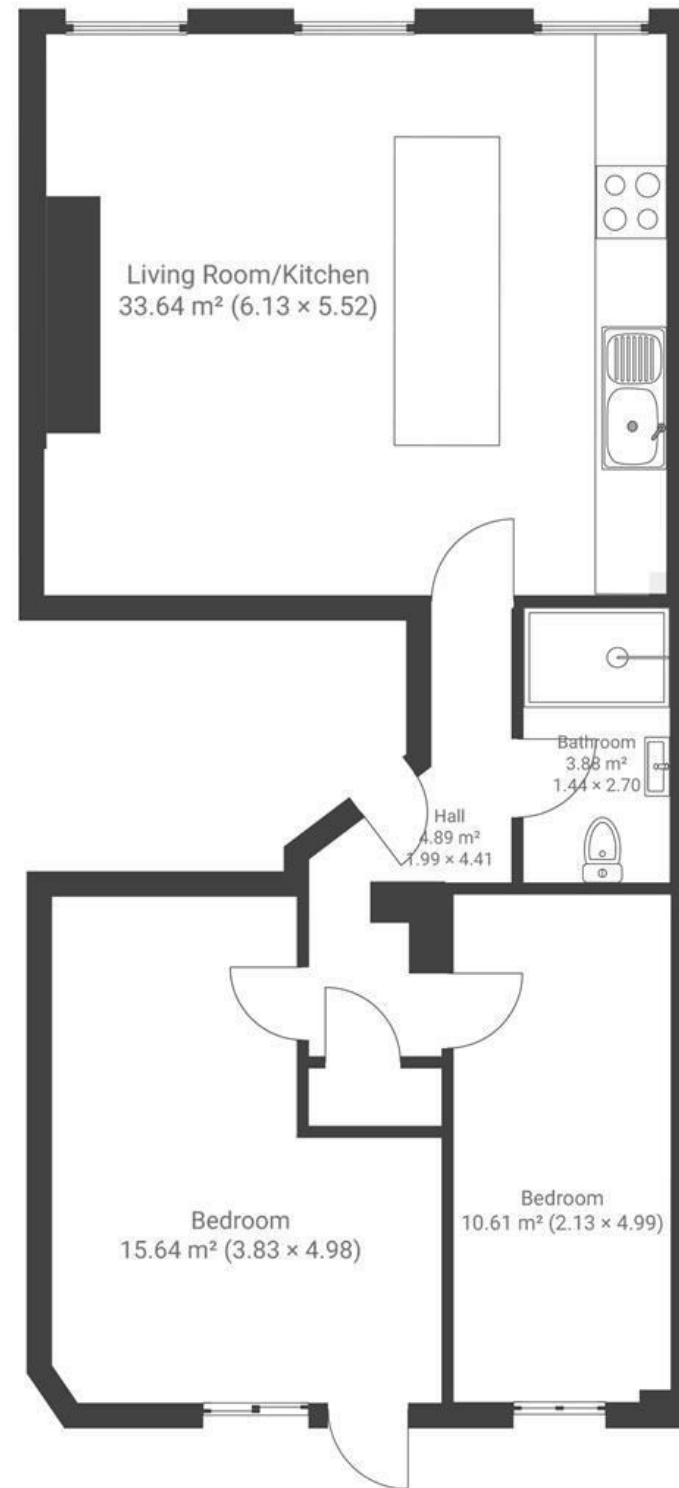


# Portland Square

## ST PAULS

APPROXIMATE FLOOR AREA  
72 SQM / 775 SQFT



Boardwalk

# Portland Square , BRISTOL



£350,000



2 Bedrooms



BS2 8RR



1 Bathrooms

*"We have absolutely loved calling this place home; it's been perfect for entertaining, and the location speaks for itself with brilliant spots like The Bristolian and Artist Residence right on your doorstep."*

