



6 Court Newton Court Road, Barry

Barry

Guide Price £158,000



6 Court Newton Court Road

Barry, Barry

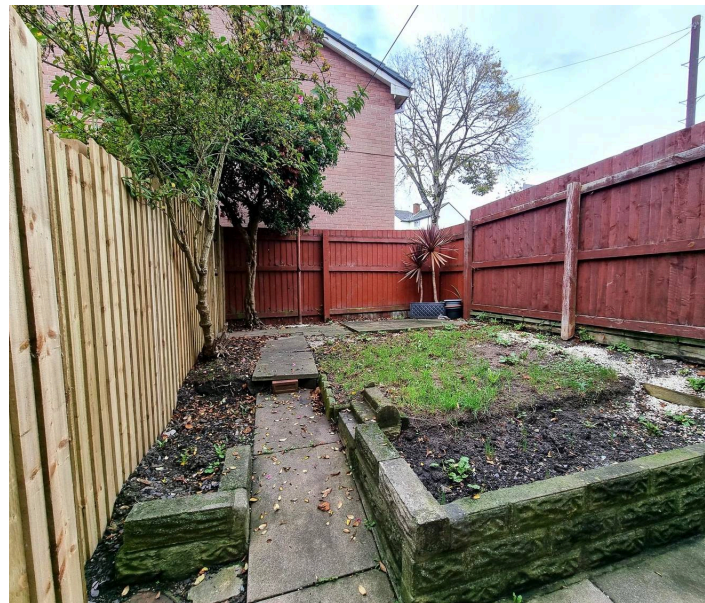
Well presented 2 bed mid terrace near town centre. Modern kitchen, bright lounge, enclosed garden with patio, double glazing, gas heating, no chain. Ideal for first time buyers or investors. Council Tax band: C

Tenure: Leasehold

EPC Energy Efficiency Rating: D

EPC Environmental Impact Rating:

- IDEAL FOR FIRST TIME BUYERS
- WELL PRESENTED
- TWO BEDROOMS
- MID LINK
- ENCLOSED GARDEN
- CLOSE TO AMENITIES
- SHORT DISTANCE TO TOWN CENTRE
- CLOSE TO LOCAL TRANSPORT
- NO ONGOING CHAIN





Lounge

16' 3" x 12' 6" (4.95m x 3.81m)

Enter through UPvc door. Fitted carpet, wall mounted electric storage heater. Window to front. Staircase rising to first floor with ranch style balustrade and fitted carpet. Open planned into :-

Kitchen Area

7' 4" x 12' 6" (2.24m x 3.81m)

Wood effect flooring. A range of base and eye level units with complementing work surfaces with matching breakfast bar. Inset single stainless steel sink with mixer tap over. Built in oven and hob with stainless steel extractor fan over. Window to rear. UPvc door giving access to rear garden.

Landing.

Fitted carpet, Ceiling with loft access. Doors into :-

Bedroom One

12' 6" x 12' 6" (3.81m x 3.81m)

Fitted carpet, flat plastered walls, Neutral décor. Built in wardrobe with sliding mirrored doors. Window to front.

Bedroom Two

6' 2" x 11' 1" (1.88m x 3.38m)

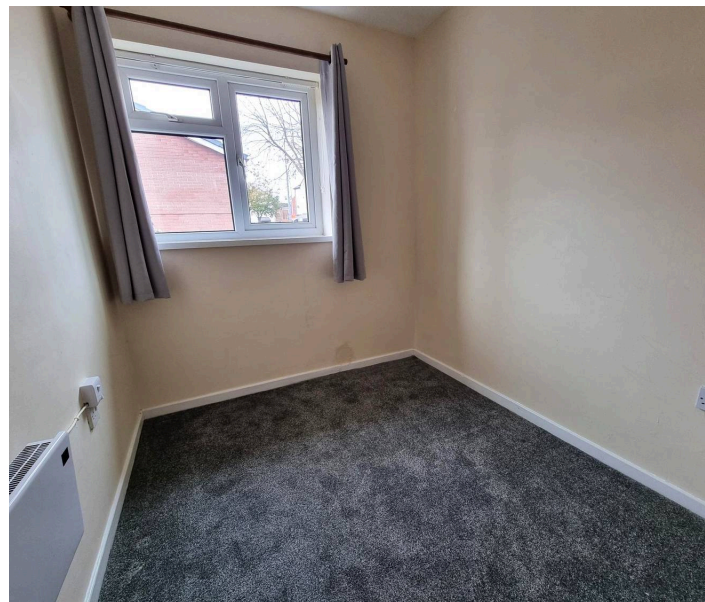
Fitted carpet, flat plastered walls. neutral décor. Wall mounted electric storage heater. Window to front.



Bathroom

7' 4" x 5' 10" (2.24m x 1.78m)

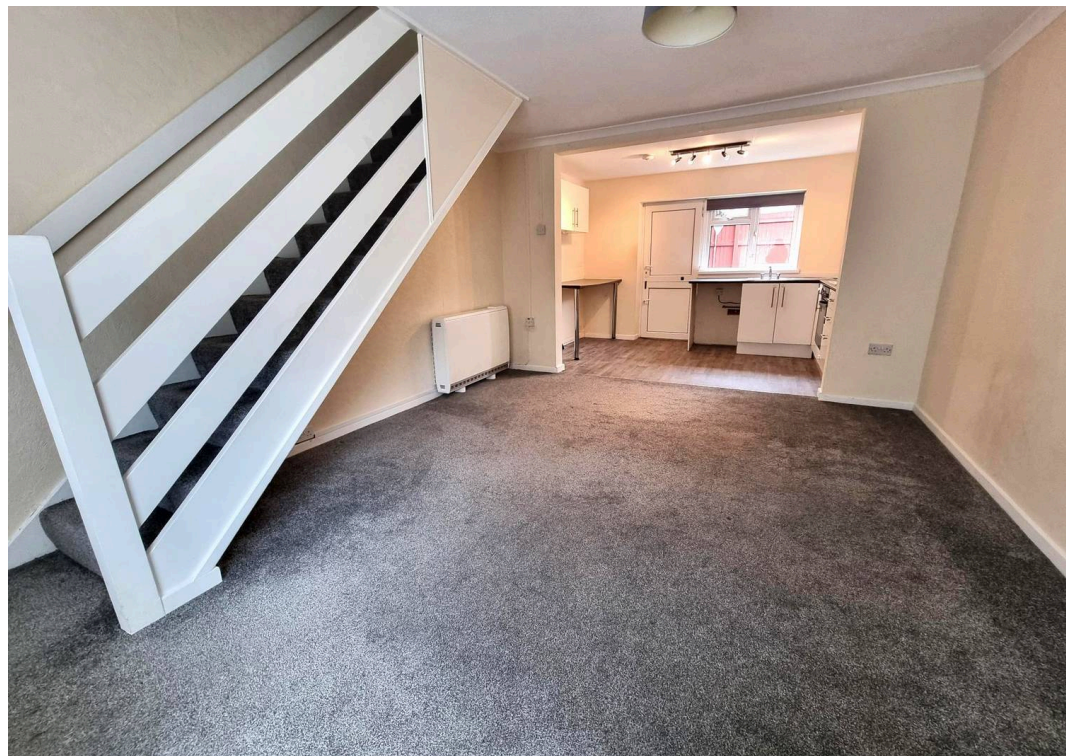
Wood effect vinyl flooring. A three piece suite in white comprising of close coupled W.C., pedestal wash hand basin and a panelled bath with an electric shower over. Partially tiled walls.



GARDEN

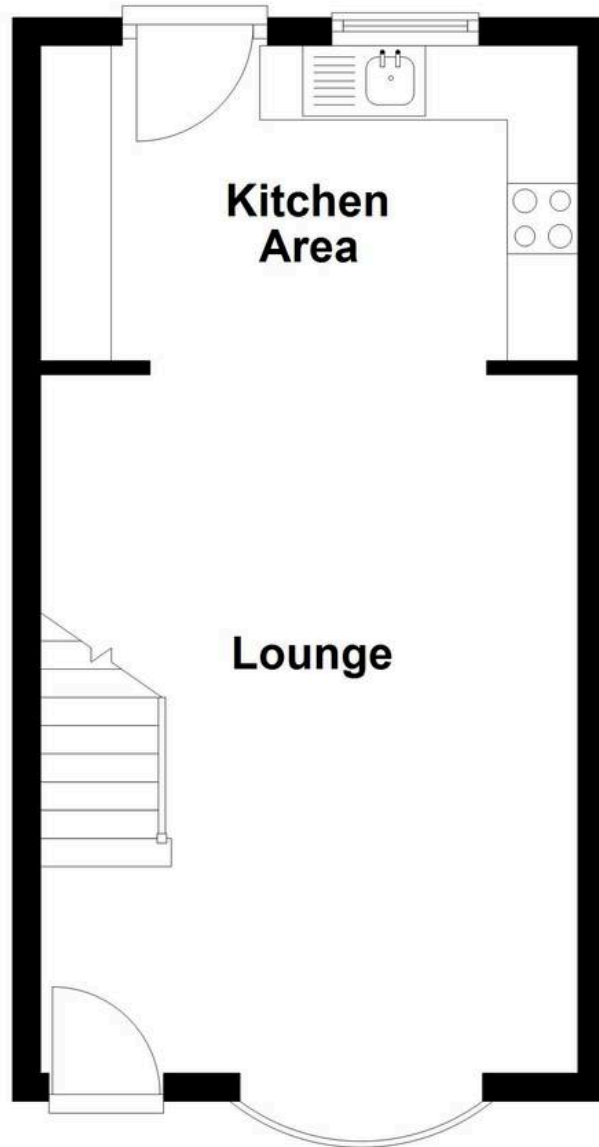
Enclosed rear garden. Raised beds. Paved patio area. Gate giving rear access.





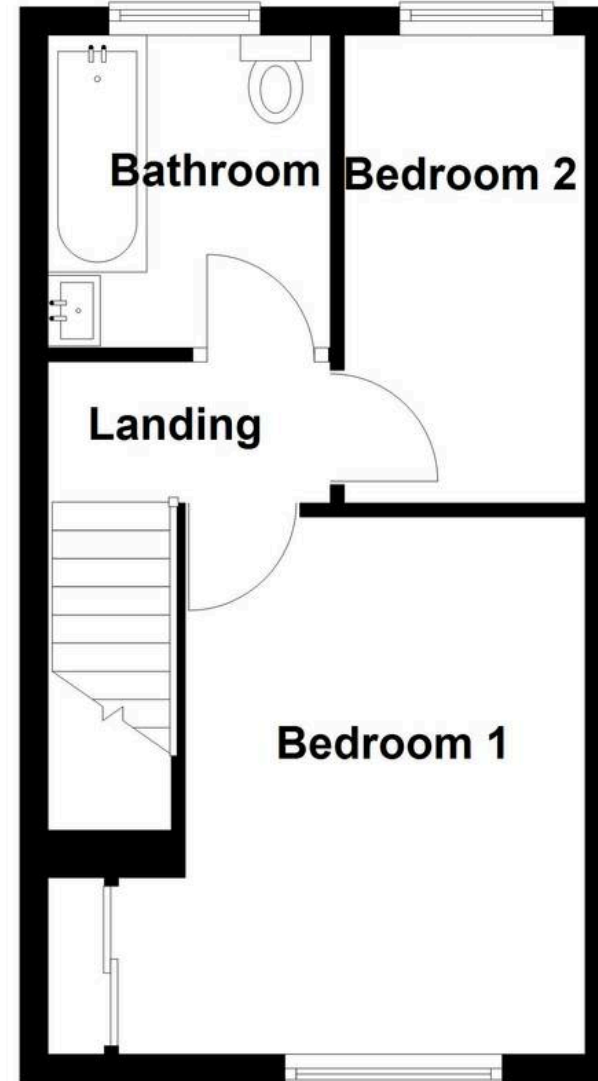
Ground Floor

Approx. 28.0 sq. metres (301.3 sq. feet)



First Floor

Approx. 27.8 sq. metres (299.0 sq. feet)



Total area: approx. 55.8 sq. metres (600.3 sq. feet)



Daniel Matthew Estate Agents Barry

14 High Street Barry, Vale of Glamorgan - CF62 7EA

01446502806

barry@danielmatthew.co.uk

www.danielmatthew.co.uk/

DanielMatthew
ESTATE AGENTS