



55, The Furlongs, Bicton Heath, Shrewsbury, SY3 5FU
£950 Per Month



55, The Furlongs, Bicton Heath, Shrewsbury, SY3 5FU

£950 Per Month

VIRTUAL TOUR AVAILABLE: Situated within the impressive Leighton Park development, this immaculate first-floor one bedroom apartment provides spacious accommodation with allocated parking and access to communal bicycle storage. The property is located within a popular area of the Shrewsbury, just a short distance from Bicton Heath's excellent amenities, road links via the bypass and less than two miles from the town centre.

Available: 07/08/26

Description

Comprising: kitchen with large, free-standing fridge freezer, integrated washing machine, oven and electric hob, living room with generous natural light and large window. Double bedroom with large, built in mirrored wardrobe, bathroom with shower overhead. Allocated parking. Communal bicycle storage. EPC D



Unfurnished

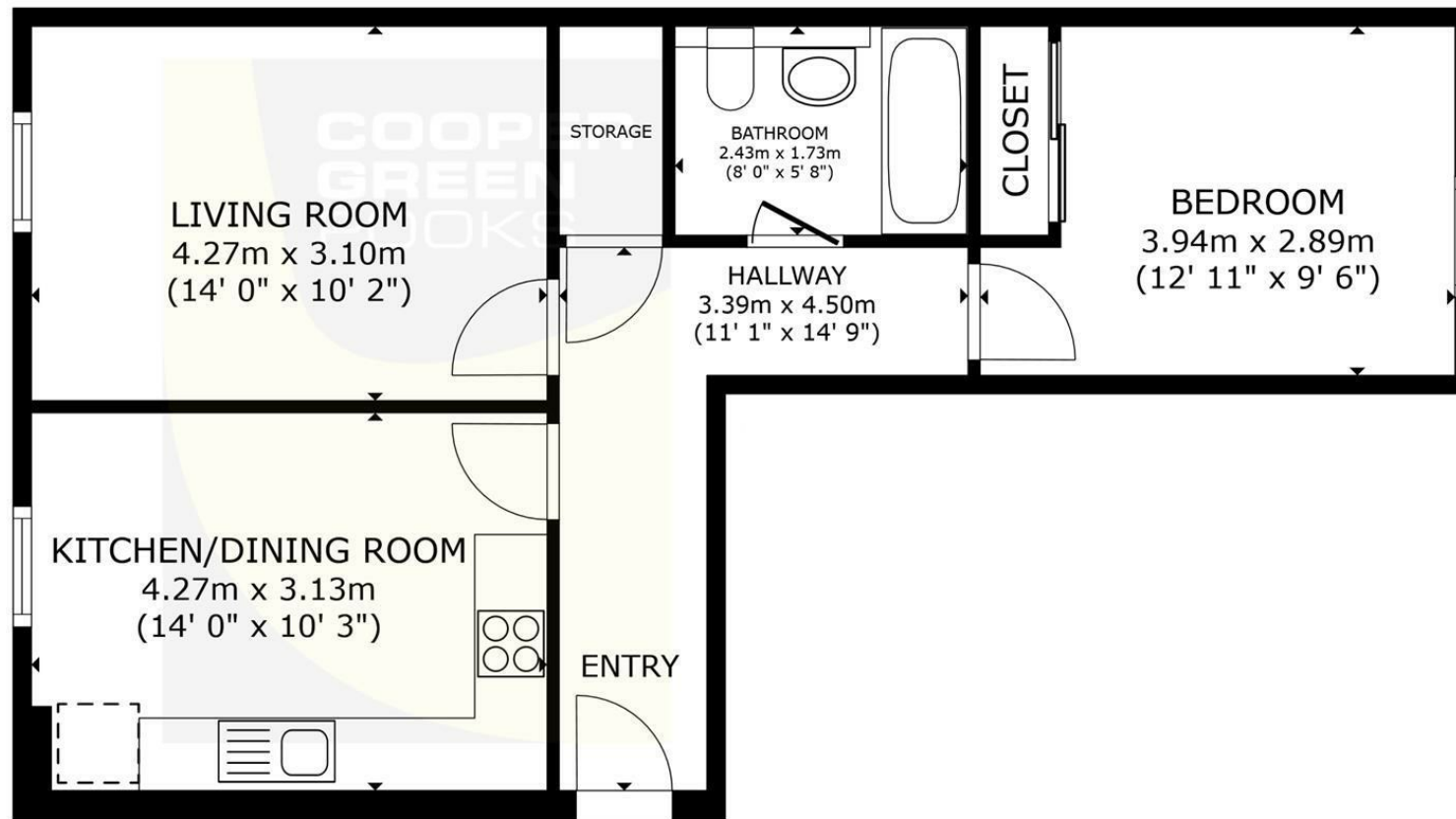
Council Tax Band: B

Available: 7th August 2026

EPC: D



Floor Plans



FLOOR PLAN

GROSS INTERNAL AREA
FLOOR PLAN 53.3 m² (574 sq.ft.)
TOTAL : 53.3 m² (574 sq.ft.)
SIZES AND DIMENSIONS ARE APPROXIMATE, ACTUAL MAY VARY.

These particulars, whilst believed to be accurate are set out as a general outline only for guidance and do not constitute any part of an offer or contract. Intending purchasers should not rely on them as statements of representation of fact, but must satisfy themselves by inspection or otherwise as to their accuracy. No person in this firm's employment has the authority to make or give any representation or warranty in respect of the property.