



**15 Northbourne Street, Gateshead, NE8 4AE**

**Offers Over £80,000**

Hive Estates are delighted to present this stunning three bedroom upper Tyneside flat, ideally positioned on Northbourne Street in the popular area of Bensham. Finished to a great standard throughout and offering a shared rear yard, this property is perfectly suited to first time buyers and investors alike.

The property opens into a bright and spacious lounge, well styled with modern grey carpets, neutral decor, and large windows that flood the room with natural light creating a warm and inviting living space.

To the rear, the contemporary kitchen is both stylish and functional, featuring grey tile effect flooring, sleek light grey high gloss cabinetry, contrasting worktops, and integrated oven, hob, and extractor.

There are three well proportioned bedrooms, including a generous front facing double with a feature chimney breast and large window. A second double bedroom sits to the side, while the third room offers excellent versatility, ideal as a bedroom, dining room, or home office.

The bathroom is fresh and modern, complete with a bath, overhead shower with glass screen, and matching WC and basin, finished with clean, neutral tiling.

Externally, the property benefits from a private rear yard perfect for outdoor seating or entertaining, as well as on street parking to the front.

Located close to the ever popular Saltwell Park and Shipley Art Gallery, the property also enjoys easy access to local shops, schools, and excellent transport links.

**Lounge/Diner 11'1" x 12'1" (3.40 x 3.70)**

**Kitchen 11'5" x 8'2" (3.50 x 2.50)**

**Bedroom 1 14'1" x 13'1" (4.30 x 4.00)**

**Bedroom 2 14'3" x 7'10" (4.35 x 2.40)**

**Bedroom 3 8'8" x 6'10" (2.65 x 2.10)**

**Bathroom 4'7" x 8'2" (1.40 x 2.50)**

# Floor Plan

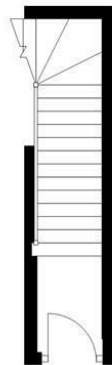
## First Floor

Approx. 69.7 sq. metres (749.7 sq. feet)



## Ground Floor

Approx. 5.4 sq. metres (57.6 sq. feet)

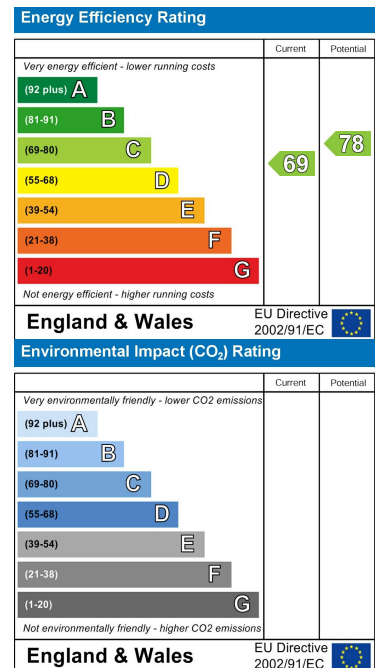


Total area: approx. 75.0 sq. metres (807.3 sq. feet)

## Area Map



## Energy Efficiency Graph



These particulars, whilst believed to be accurate are set out as a general outline only for guidance and do not constitute any part of an offer or contract. Intending purchasers should not rely on them as statements of representation of fact, but must satisfy themselves by inspection or otherwise as to their accuracy. No person in this firm's employment has the authority to make or give any representation or warranty in respect of the property.