



## Charlotte Parade, SE23

£3,000 Per calendar month

A stunning and beautifully presented three double bedroom home, ideally located on Shipman Road, SE23. This impressive property boasts generous space and an abundance of natural light, featuring a spacious double reception room and an open plan living area that incorporates a sleek, modern kitchen complete with integrated appliances. There is also an additional reception room offering a calm and relaxing ambience, with direct access to a well kept private garden perfect for entertaining or unwinding outdoors. Upstairs, all bedrooms are well-proportioned, including a stylish principal bedroom with a contemporary en-suite. A separate, modern family bathroom with a bathtub serves the remaining bedrooms, completing this exceptional home.

Shipman Road is well located for Forest Hill and Honor Oak Park stations, with fast links into London Bridge and the Overground network. The area is popular with families, served by highly regarded schools including Dalmain and Fairlawn Primary. Nearby green spaces such as Blythe Hill Fields, Horniman Gardens and Peckham Rye Park offer plenty of outdoor space to enjoy.

### Features

- Three Bedrooms
- Two Bathrooms
- Private Garden
- Two Receptions
- Double Reception Room
- On Street Parking



## Charlotte Parade, SE23

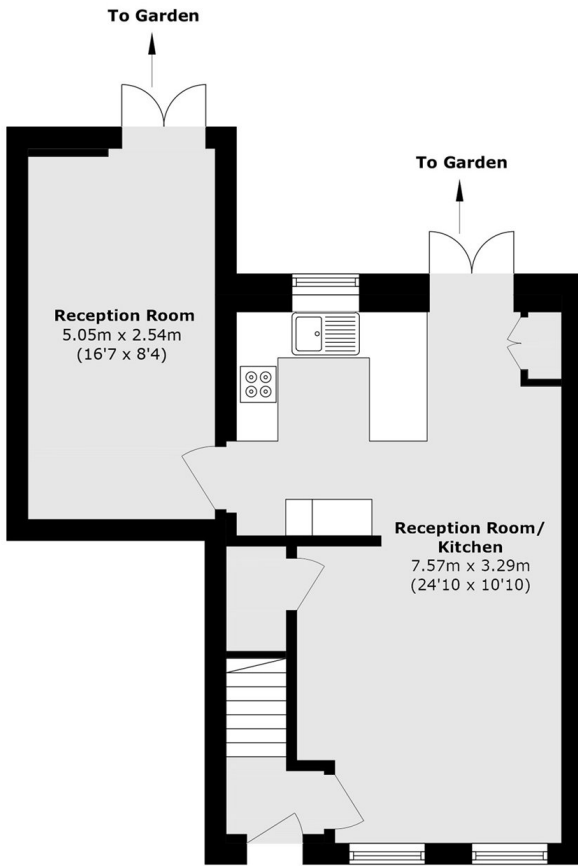
A stunning and beautifully presented three double bedroom home, ideally located on Shipman Road, SE23. This impressive property boasts generous space and an abundance of natural light, featuring a spacious double reception room and an open plan living area that incorporates a sleek, modern kitchen complete with integrated appliances.

There is also an additional reception room offering a calm and relaxing ambience, with direct access to a well kept private garden perfect for entertaining or unwinding outdoors.

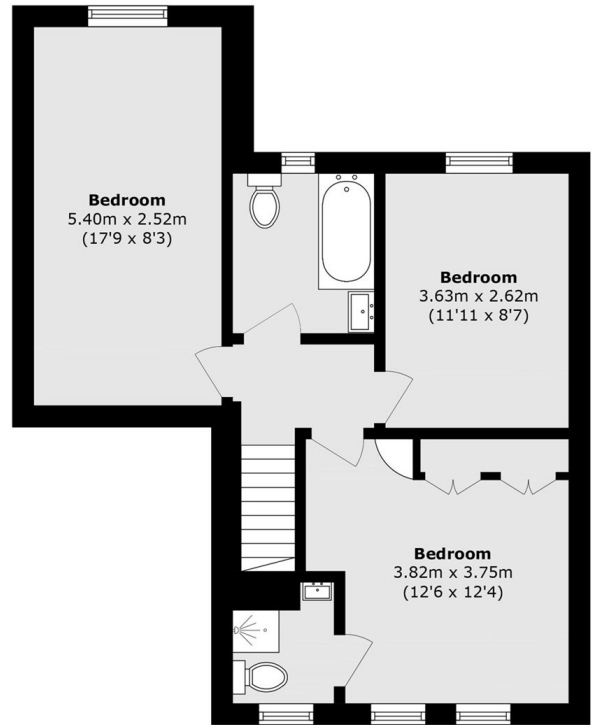
Upstairs, all bedrooms are well-proportioned, including a stylish principal bedroom with a contemporary en-suite. A separate, modern family bathroom with a bathtub serves the remaining bedrooms, completing this exceptional home.



# Charlotte Parade, London, SE23



**Ground Floor**



**First Floor**

Total area (approx.): 103.3 sq. m (1111.9 sq. ft)