



Little Somerset Street, E1

£1,950 Per calendar month

A well presented one double bedroom apartment located in the heart of Aldgate. This purpose built property has a spacious open plan reception, double bedroom, wood floors and a modern feel throughout.

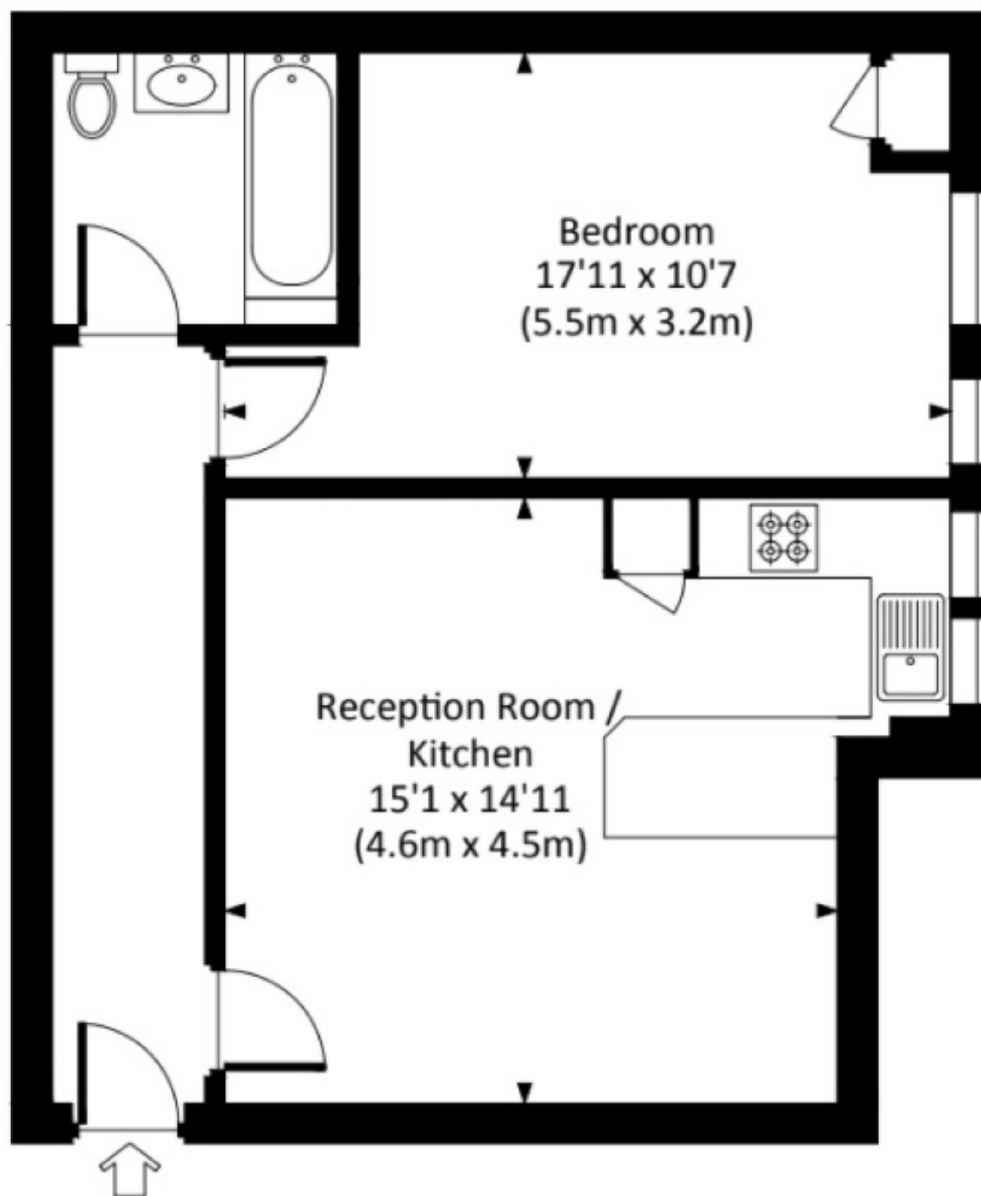
Located across the road from Aldgate Station and within easy reach of Brick Lane, Shoreditch, Bank and Liverpool street making this the perfect central location for access to the City.

Features

- One Double Bedroom
- Open Plan Reception
- Lift Access
- Wood Floors
- Modern Finish Throughout
- 550 Sq Ft

Little Somerset Street, London, E1

Approx. gross internal area
550 Sq Ft. / 51.1 Sq M.



SECOND FLOOR

Dexters

City
5 Sandys Row
London
E1 7HW
Lettings
020 7392 9111

Energy Rating: C. We aim to make our particulars both accurate and reliable. However they are not guaranteed; nor do they form part of an offer or contract. If you require clarification on any points then please contact us, especially if you're traveling some distance to view. Please note that appliances and heating systems have not been tested and therefore no warranties can be given as to their good working order.



dexters.co.uk