

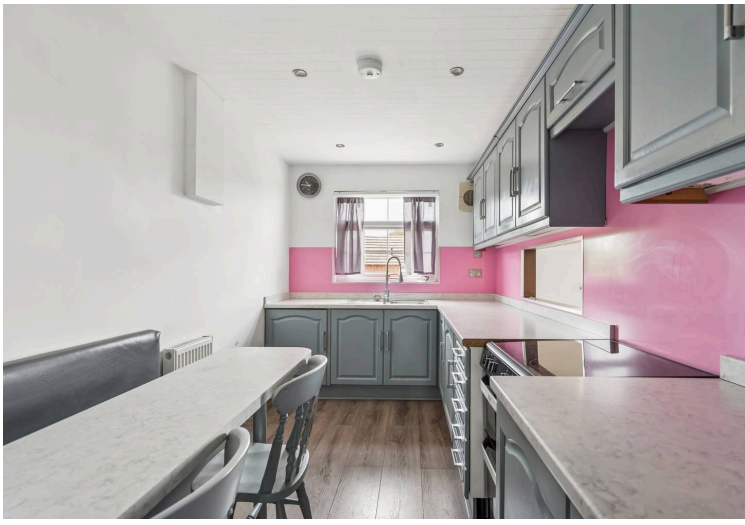


## Stag Lane, Chorleywood, WD3

£825,000 Freehold

DETACHED FOUR BEDROOM HOUSE • OPEN PLAN LIVING/DINING ROOM • CONTEMPORARY KITCHEN WITH BREAKFAST BAR • MODERN BATHROOM & SHOWER TO BEDROOM THREE • SHOWER TO BEDROOM THREE • BUILT-IN WARDROBES TO BEDROOMS ONE & TWO • LANDSCAPED FRONT & REAR GARDENS • QUIET RESIDENTIAL LOCATION • CLOSE TO CHORLEYWOOD STATION

**TREND & THOMAS**  
ESTATE AGENTS SURVEYORS & VALUERS



A beautifully presented chain free FOUR BEDROOM DETACHED HOUSE, in a corner position on a sought-after residential road.

Positioned within a popular residential setting, the property boasts a generous reception room with an exposed brick feature wall, a serving hatch through to the kitchen and double French doors opening to the rear garden. The modern kitchen is thoughtfully designed with sleek cabinetry, marble-effect countertops, a vibrant splashback, and a cosy built-in breakfast bar. Elegant laminate wood flooring flows seamlessly throughout the ground floor of the home, enhancing the sense of space and sophistication.

The accommodation continues to impress with four spacious bedrooms, with bedrooms one and two benefitting from ample built-in wardrobes providing practical storage solutions. Bedroom three has its own shower and sink and there is a modern family bathroom with contemporary fittings.

The rear garden is well-maintained with a lush lawns, vibrant flowerbeds, and mature trees and steps down to an outside shed. There is a paved patio area perfect for relaxing in the sunshine, which also leads round to a small side garden with area of lawn and close boarded fencing. A beautifully landscaped front garden with mature hedges and trees, a gravel flower bed and a pathway leading to the front entrance. Set in a peaceful neighbourhood, this detached home offers a superb balance of serene living and practical comforts, making it an exceptional choice for families seeking space, style, and tranquillity.

Located a mile from Chorleywood Station and the local shops and amenities on Lower Road. Chorleywood offers superb transport links, with access to junctions 17 and 18 of the M25. Reach Baker Street in 20-25 minutes via the Metropolitan Line and there are local bus routes servicing the Village. The area is renowned for its choice of schooling to include Merchant Taylor's, Royal Masonic, St Clement Danes, and Charlotte House. Leisure facilities for the equestrian, golfer and tennis player also nearby.

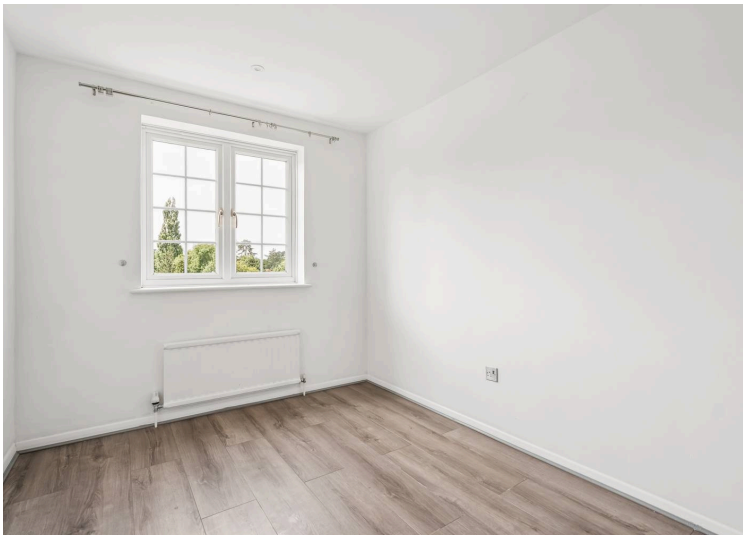
Nearest Station: 0.8 miles - Chorleywood Station

Council Tax band: F Approx. £3509.49 2026-2027 (Three Rivers District Council)

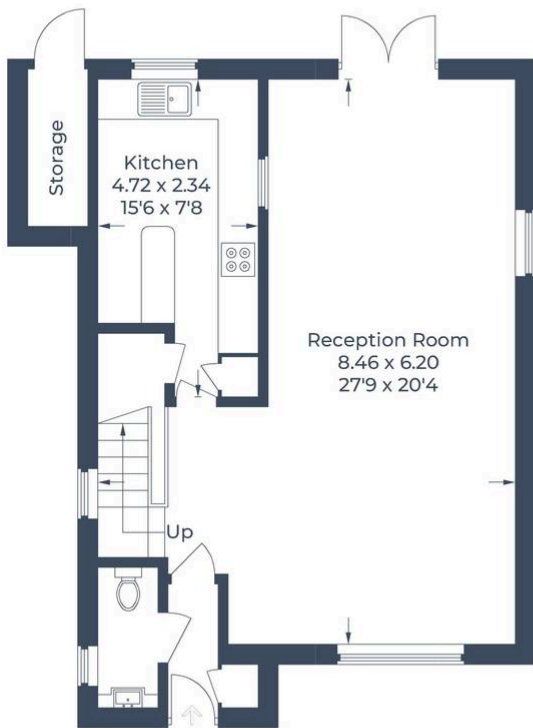
EPC Energy Efficiency Rating: D

EPC Environmental Impact Rating: E

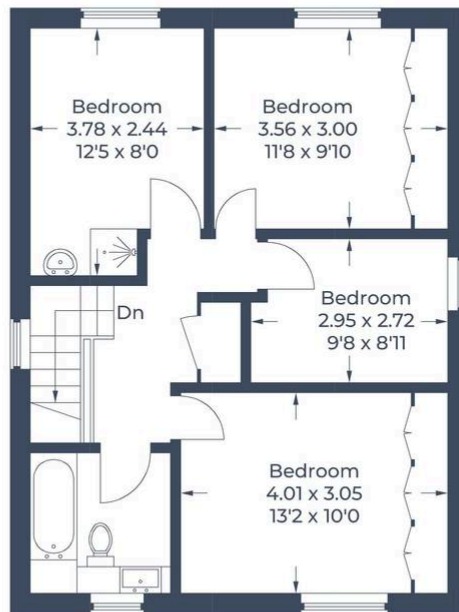




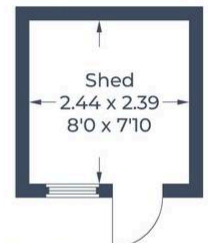
Approximate Gross Internal Area  
 Ground Floor = 55.4 sq m / 596 sq ft  
 First Floor = 52.8 sq m / 568 sq ft  
 Storage / Shed = 8.0 sq m / 86 sq ft  
 Total = 116.2 sq m / 1,250 sq ft



**Ground Floor**



**First Floor**



(Not Shown In Actual Location / Orientation)

Illustration for identification purposes only,  
 measurements are approximate, not to scale.

© CJ Property Marketing



Whilst these particulars are intended to give a fair description of the property, their accuracy is not guaranteed. Any purchaser must satisfy themselves as to the correctness of statements contained therein. These particulars do not constitute an offer or contract, and statements therein are made without responsibility, or warranty on the part of the vendor or Trend & Thomas, neither of whom are liable to expenses incurred should the property no longer be available.

It is not always possible on viewings to confirm the working order of the central heating or appliances included within the sale; therefore, we strongly recommend that prospective buyers satisfy themselves upon these matters before embarking upon the expense of purchase.

These particulars do not confirm that any fixtures and fittings mentioned are included within a purchase, unless otherwise stated, to include but not limited to carpets, curtains, furnishings, fittings, electrical goods, gas fires, light fittings etc.