



## Valencia Tower, Bollinder Place, London, EC1V

£775,000

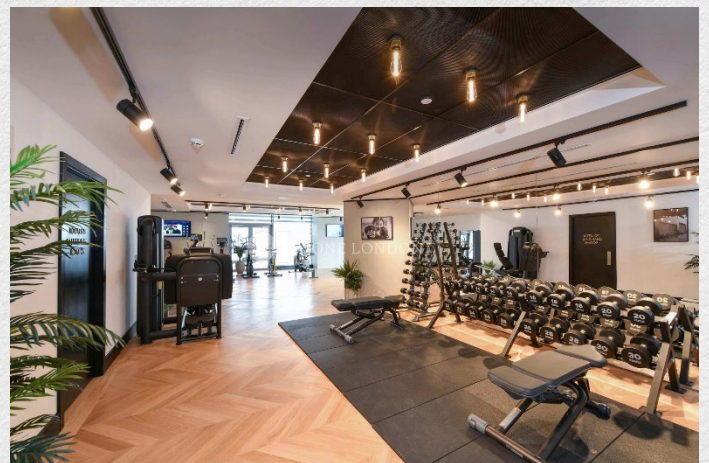
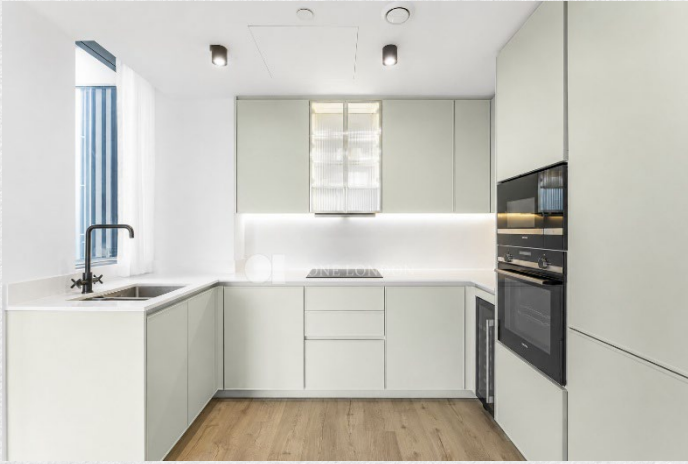
- Higher floor
- One bed
- 667 SqFt
- Views towards the City
- Great transport links
- High specification interior
- 24 Hour Concierge
- Swimming Pool | Spa | Gymnasium
- Residents Lounges | Screening room
- Comfort Cooling
- Zoned underfloor heating

Truly stunning One bedroom flat in the prestigious 250 city road development. Offering impressive East facing views of the city skyline, located in the heart of the city.

compromises inviting living area, fitted kitchen with integrated appliances, a good-sized double bedroom with fitted wardrobes and a modern bathroom suite. also offers under floor heating thought-out and floor to ceiling windows with views over the London skyline.

250 City Road has much to offer its residents, State-of-the-art gym, 20 metre swimming pool and spa, residents lounge and rooftop fitness terrace with views towards the City and canal basin. 24-hour concierge service is on-hand to provide assistance.

The property Located in the heart of Zone 1 and within walking distance of Old Street, Islington, Kings Cross & Liverpool St not to mention the 5 major transport hubs.





ONE LONDON

PROPERTY

*Valencia Tower, 250 City Road, EC1V*

SIZE

*667 sq ft*

*One bedroom | One bathroom*

CONTACT

*0207 856 0396*

*info@one-london.uk*

*www.one-london.uk*



VIEWS TOWARDS REGENT'S CANAL



VIEWS TOWARDS CANARY WHARF

*\*\* For illustration purposes only. Could not be to scale. One-London aims to ensure accuracy but is not liable for any discrepancies.*