



Barge Walk, SE10

£400,000

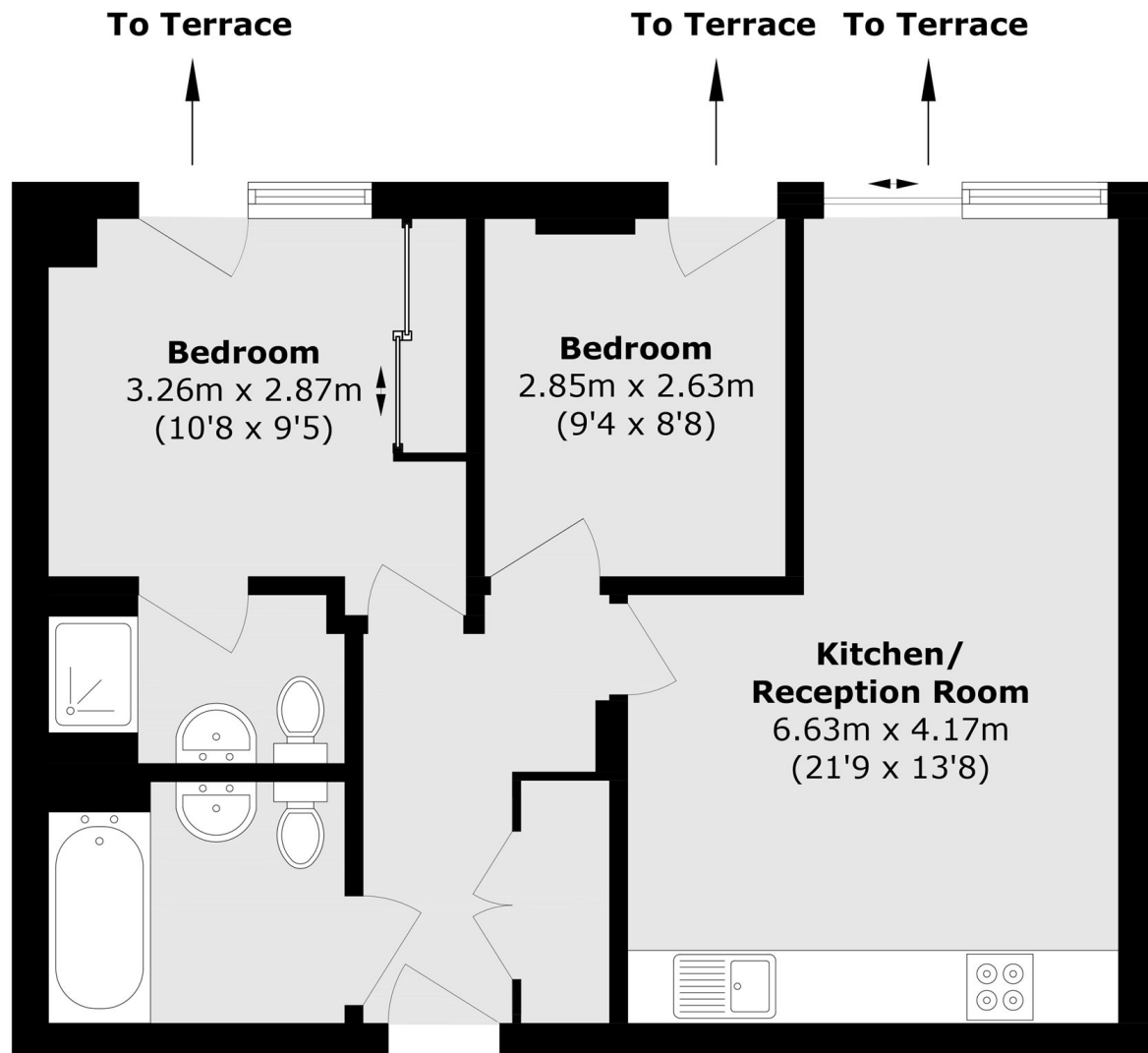
*** GUIDE PRICE*** £400,000- £425,000. Located on the peaceful riverside stretch of Barge Walk, this well-presented two-bedroom apartment offers modern living in one of Greenwich's most desirable developments. The bright open-plan living area opens onto a private terrace with direct access to beautifully maintained communal gardens, creating an effortless indooroutdoor feel. Both bedrooms are generously sized with excellent natural light, while the sleek kitchen and well-finished bathroom enhance the home's contemporary appeal. Residents enjoy a concierge service and secure covered parkinghighly valuable features in this sought-after riverside setting.

Set moments from the River Thames, The o2 Arena, and the amenities of Greenwich Peninsula, the flat offers excellent transport links via North Greenwich Underground (Jubilee Line), Thames Clippers river services and nearby cycle routes.

Features

- Two Bedroom Apartment
- Secure Gated Parking
- Terrace
- Close To Jubilee Line Station
- Concierge Service
- Close Amenities
- Riverside Location

Barge Walk,
London, SE10



Total area (approx.): 58.4 sq. m (628.6 sq. ft)