



Amyand Park Road, TW1

£1,495 Per calendar month

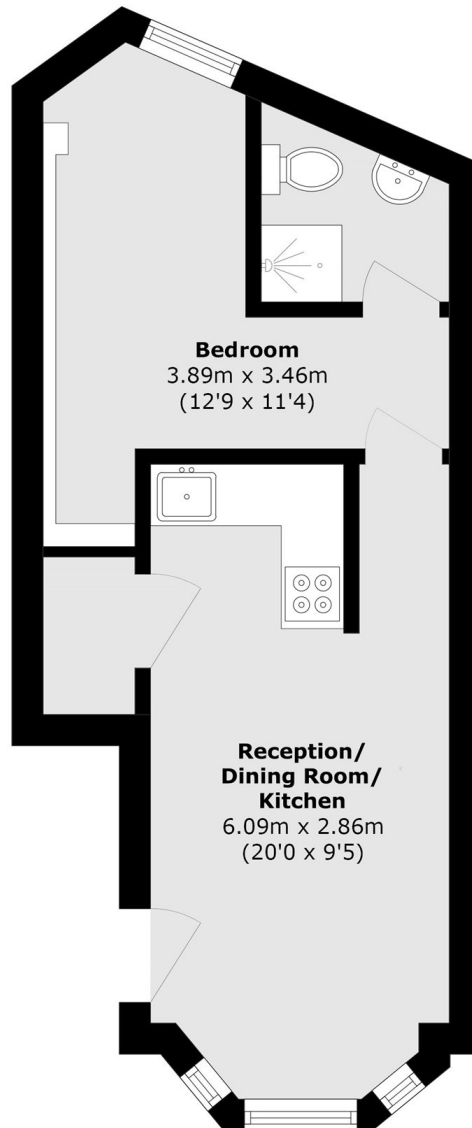
A beautifully refurbished one bedroom flat in the heart of St Margarets village, just moments from local cafés, restaurants and the train station. The property features a bright open-plan living space with a contemporary kitchen, sleek wooden flooring throughout and a spacious master bedroom with a brand new en suite shower room. Ideal for anyone seeking a modern, low-maintenance home with everything the village has to offer right on your doorstep.

Amyand Park Road is a popular residential road in the heart of St Margarets. Situated equidistant from the fast train service at Twickenham to London Waterloo which is 0.3 miles away and 0.1 miles to the village high street of St Margarets. Moor Mead Park and Marble Hill Park are close by.

Features

Victorian Conversion
Newly Refurbished
One Bedroom
Unfurnished
Village Location
Ground Floor

Amyand Park Road, St Margarets, TW1



Total area (approx.): 32.5 sq. m (349.8 sq. ft)