

## Moulding Lane, SE14

### £350,000

Introducing this beautifully designed one-bedroom apartment, perfectly positioned between New Cross and Deptford within the highly sought-after Deptford Foundry development. Celebrated for its contemporary urban lifestyle and thriving creative community, this unique setting offers a distinctive place to call home.

This charming one-bedroom flat offers an impressive amount of living space, thoughtfully designed to maximise comfort and practicality. Generous storage solutions are seamlessly integrated throughout, ensuring a clutter-free and organised home.

A standout feature of the property is its expansive private terrace a rare and highly desirable addition providing the perfect setting to relax and unwind.

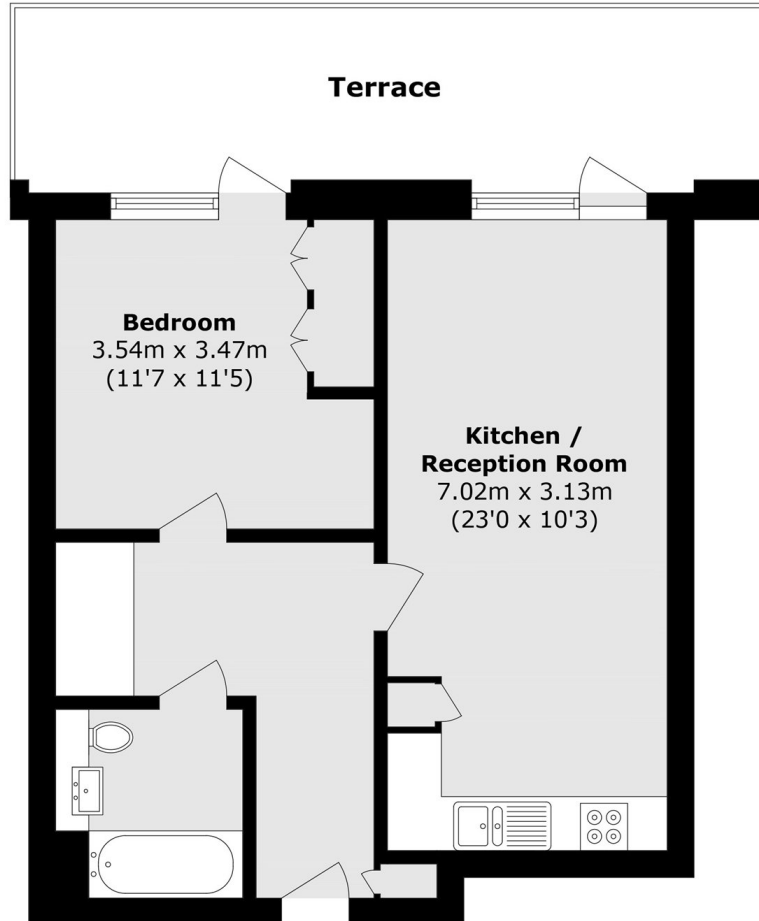
Whether you're enjoying a peaceful early morning coffee as the day begins or soaking up the warmth of the afternoon sun, this outdoor space creates an inviting extension of the home, ideal for both quiet moments and entertaining guests.

Situated in Zone 2, the development is just moments from both Deptford and New Cross stations, providing fast and reliable transport links into the City ideal for commuters seeking both accessibility and a lively neighbourhood atmosphere.

### Features

- One Bedroom Apartment
- Private Terrace
- Concierge
- Open Plan Living Room
- Secure Entry System and Lift
- Long lease
- Close To Transport Links

# Moulding Lane, London, SE14



Total area (approx.): 49.9 sq. m (537.1 sq. ft)  
Terrace area (approx.): 17.2 sq. m (185.1 sq. ft)