

## Flat 46, Central House 32-66 High Street, London - E15 2NS

£325,000 Leasehold

Well-proportioned two-bedroom apartment • Private balcony with open urban views • Separate kitchen and defined living space • Ideal buy-to-let investment or first-time purchase • Allocated parking space included • Access to communal facilities • Set within a popular Stratford development • Moments from Westfield Stratford City and local amenities • GUIDE PRICE £325,000 to £350,000



**HIGHCASTLE  
ESTATES**

**020 3026 4420**  
**sales@hceuk.com**

GUIDE PRICE £325,000 to £350,000 Spacious two-bed Stratford apartment with private balcony, parking, and communal facilities. Ideal for investors or first-time buyers. Excellent transport links and strong rental demand.

Council Tax band: C

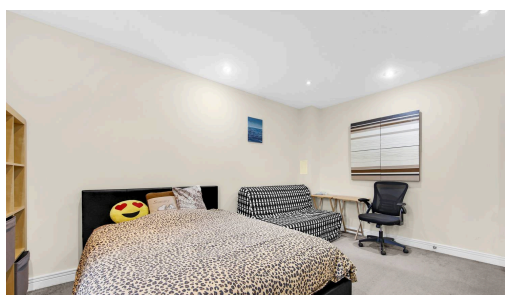
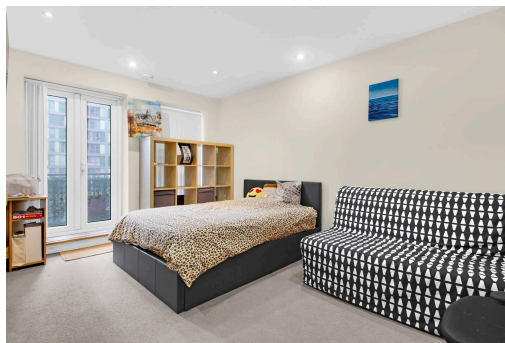
Tenure: Leasehold

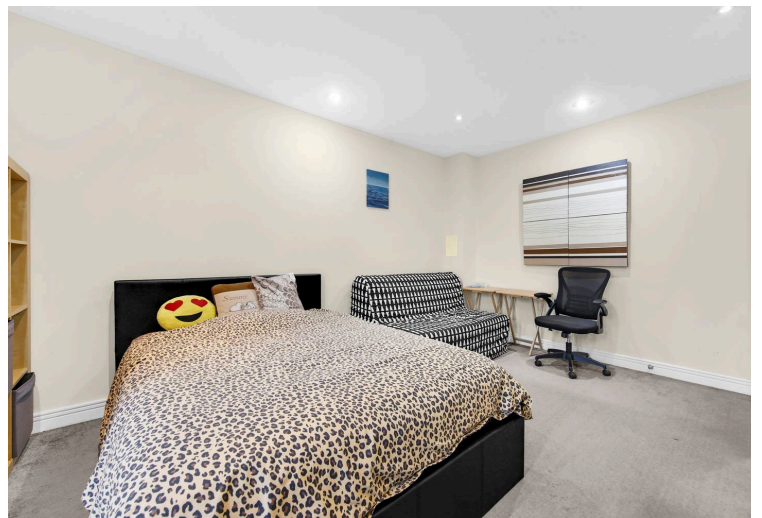
EPC Energy Efficiency Rating: D

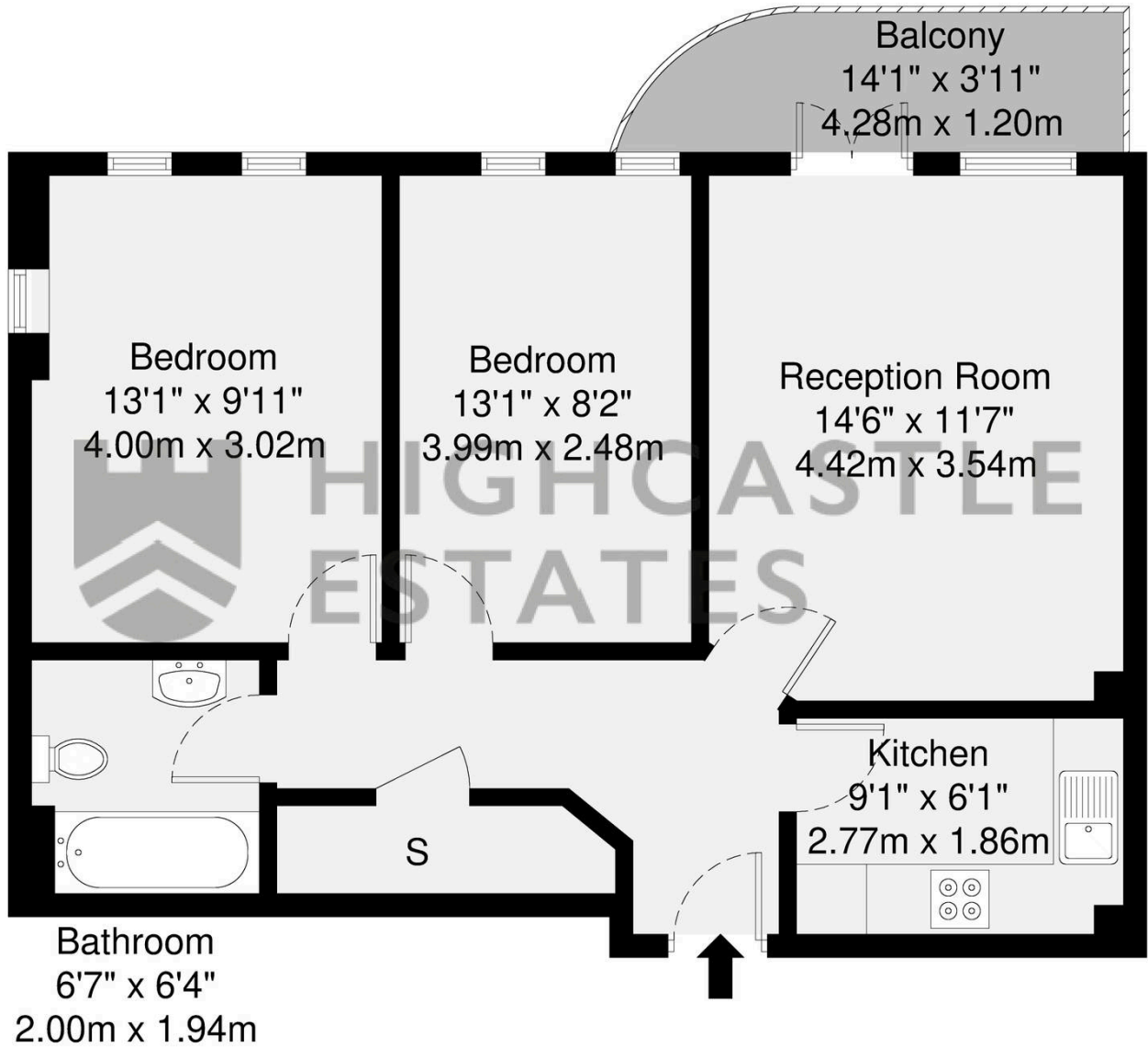
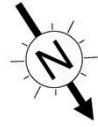
EPC Environmental Impact Rating: C



- Well-proportioned two-bedroom apartment
- Private balcony with open urban views
- Separate kitchen and defined living space
- Ideal buy-to-let investment or first-time purchase
- Allocated parking space included
- Access to communal facilities
- Set within a popular Stratford development
- Moments from Westfield Stratford City and local amenities
- GUIDE PRICE £325,000 to







Second Floor

GROSS INTERNAL AREA (GIA)  
The footprint of the property  
58.9 sq m / 633 sq ft

TOTAL STORAGE SPACE  
Storage and wardrobe total area  
2.1 sq m / 22 sq ft

EXTERNAL FEATURES  
Garden, Balcony, Terrace, Verandah etc.  
5.1 sq m / 54 sq ft

RESTRICTED HEAD HEIGHT  
Limited use area under 1.5m  
0.0 sq m / 0.0 sq ft

Disclaimer : Floorplan measurements are approximate and are for illustrative purposes only. While we do not doubt the floorplan accuracy and completeness, you or your advisors should conduct a careful, independent investigation of the property in respect of monetary valuation.

Maison  
VUE

You can include any text here. The text can be modified upon generating your brochure.