



Glen Mona Cottage Main Road, Ramsey, Isle Of Man, IM7 1HR
Asking Price £445,000

- Traditional Manx smallholding full of character, heritage, and rural charm, offering a rare opportunity to create a desirable countryside home.
- Includes a range of traditional outbuildings (workshop, two stables, piggery, and additional store), all offering potential for a variety of uses subject to requirements.
- Highly sought-after village location adjacent to the Glen Mona Public House, combining rural living with convenient access to local amenities and well-regarded schooling.
- Set within approximately 5 acres of productive land with flexible grazing, enjoying elevated countryside views between Ramsey and Laxey, with uPVC double glazing and mains drainage.
- Property requires full updating and investment throughout, offering excellent scope for improvement and personalisation.



Deanwood's are delighted to present Glen Mona Cottage, a traditional Manx smallholding offering a rare opportunity to acquire a property full of character, heritage, and potential. Rich in charm and reflecting the Island's rural identity, this appealing holding is as Manx as the surrounding hills themselves.

Ideal for those seeking the "good life", the property is set in a convenient village location adjacent to the Glen Mona Public House and offers a rare combination of land, outbuildings, history, and scope for improvement. The property requires investment and updating throughout, however it presents an excellent opportunity to create a highly desirable rural home and lifestyle property.

Set in an elevated and commanding position, Glen Mona Cottage enjoys far-reaching countryside views across Maughold and is ideally located between Ramsey and Laxey. Despite its peaceful rural setting, it remains within walking distance of the village and is convenient for the highly regarded Dhooon School.

Approached via a charming sunken driveway, the cottage makes an immediate impression. An archetypal country home, it features gable-end chimneys and sash-style windows. The accommodation is well-proportioned and offers a practical layout with clear potential for modernisation and enhancement.

To the side of the cottage is a useful range of traditional outbuildings comprising a workshop, two stables, and a piggery, with an additional outbuilding to the rear. While all require improvement, they offer excellent potential for storage, livestock, equestrian use, or ancillary purposes.

The property is surrounded by two interconnected fields extending to approximately 5 acres. With a central gateway allowing flexible grazing, the land is productive and currently produces excellent hay, though would benefit from ongoing investment and management to realise its full potential.

Further benefits include uPVC double glazing and mains drainage.









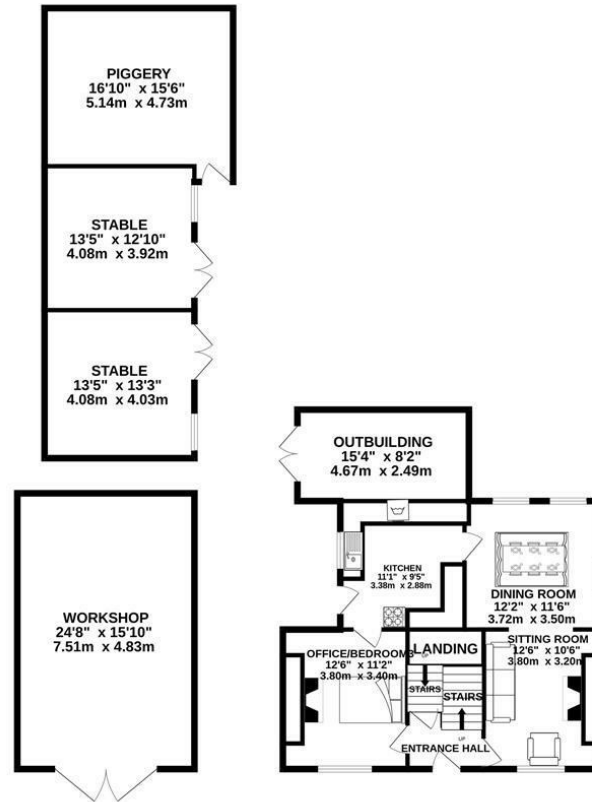




Glen Mona Cottage Main Road, Ramsey, Isle Of Man, IM7 1HR



GROUND FLOOR
1716 sq.ft. (159.4 sq.m.) approx.



1ST FLOOR
486 sq.ft. (45.2 sq.m.) approx.



TOTAL FLOOR AREA: 2202 sq.ft. (204.6 sq.m.) approx.

Not to scale-for identification purposes only
Made with Metropix ©2024



DOUGLAS

37 VICTORIA STREET
DOUGLAS
ISLE OF MAN IM1 2LF

T 01624 620606
F 01624 677363
E info@deanwood.co.im

CASTLETOWN

COMPTON HOUSE
9 CASTLE STREET CASTLETOWN
ISLE OF MAN IM9 1LF

T 01624 825995
F 01624 825996
E castletown@deanwood.co.im

RAMSEY

LEZAYRE HOUSE
87 PARLIAMENT STREET
RAMSEY ISLE OF MAN IM8 1AQ

T 01624 816111
F 01624 816588
E ramsey@deanwood.co.im

These particulars are for information purposes only. They do not constitute or form any contract nor should any statement contained herein be relied upon as a representation of fact. Neither the vendor nor DeanWood Agencies Limited ('the firm'), nor any officer or employee of the firm accept liability or responsibility for any statement contained herein. The vendor does not by these particulars, nor does the firm, nor does any officer or any employee of the firm have any authority to make or give any representation or warranty whatsoever as regards the property or otherwise. It is the sole responsibility of any person interested in the property described in these particulars to make all proper enquiries and searches to verify the description of the property and all other particulars herein.

FOR MORE PROPERTIES VISIT OUR WEBSITE @ deanwood.im