

39 Village Centre, £115,000

(Other charges apply)

RICHMOND
VILLAGES

Part of Bupa

SF

1



1



EPC - C



1 bedroom second floor apartment

An attractive second-floor, one-bedroom apartment at 608 sqft. The apartment is situated close to the main village center and village facilities.

Specification

- A bright and large living room with glazed double doors leading to the kitchen. Feature fireplace.
- Modern fitted kitchen with range of wall and base units and integrated appliances including Neff fridge/freezer.
- Main bedroom with double doors leading to an en-suite shower room.
- En-suite shower room with large shower area and screen.
- TV and satellite points*.
- Well stocked flower borders and lawns maintained by the Village Gardeners.
- Allocated parking space for one car.



*Satellite subscription not included.

Important Notice: These particulars are intended to give a fair and substantially correct overall description. Other fees and charges apply, please contact the Village Advisers for further details. Properties are sold on a 125 year lease and this property has 125 years remaining.

01332 794 300

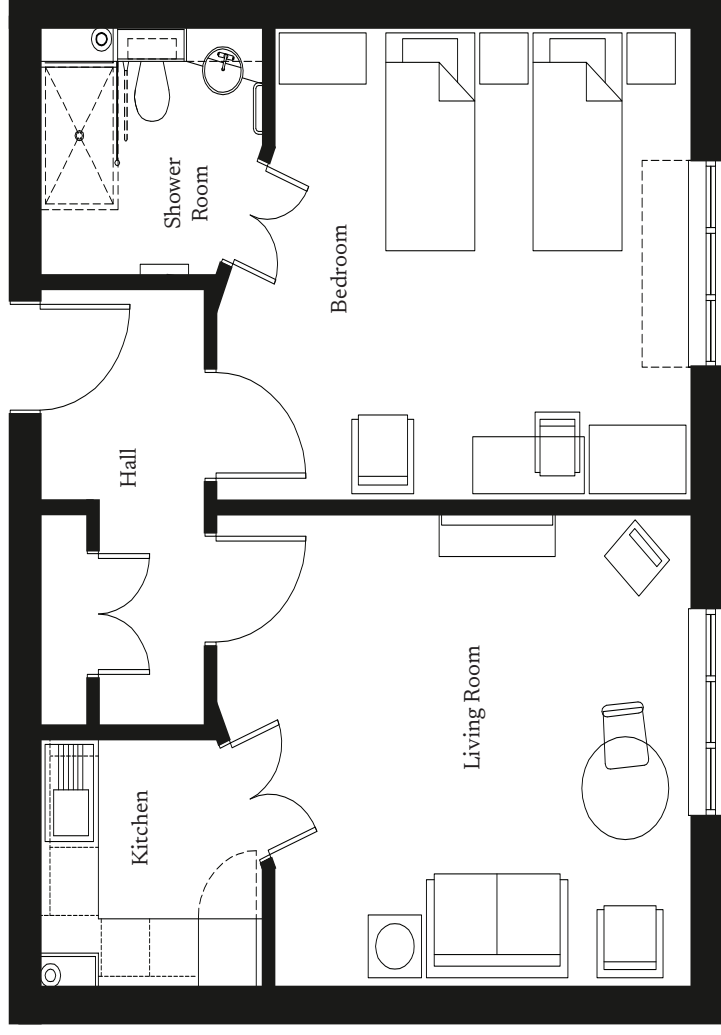
astonontrent@richmond-villages.com

Richmond Villages Bede,
Richmond Drive, Aston-on-Trent, Derbyshire, DE72 2EA

39 Village Centre

Second Floor | 56.50m² (608.16ft²)

Kitchen	2300mm x 2180mm
7'7" x 7'2"	
Living Room	4900mm x 4150mm
16'1" x 13'7"	
Bedroom	4635mm x 4150mm
15'3" x 13'7"	
En-suite	2300mm x 2180mm
7'7" x 7'2"	



These particulars are intended to give a fair and substantially correct overall description.

Measurements have been taken at 1500mm ceiling height.

All dimensions are approximate. Bedroom measurements include the wardrobe if applicable. Room measurements include bay windows if applicable.

Furniture layout is to give an indicative impression. Although all efforts have been made to ensure its accuracy at time of print dimensions, fixtures, fittings, finishes and specifications are subject to change without notice.

The properties are sold unfurnished.

