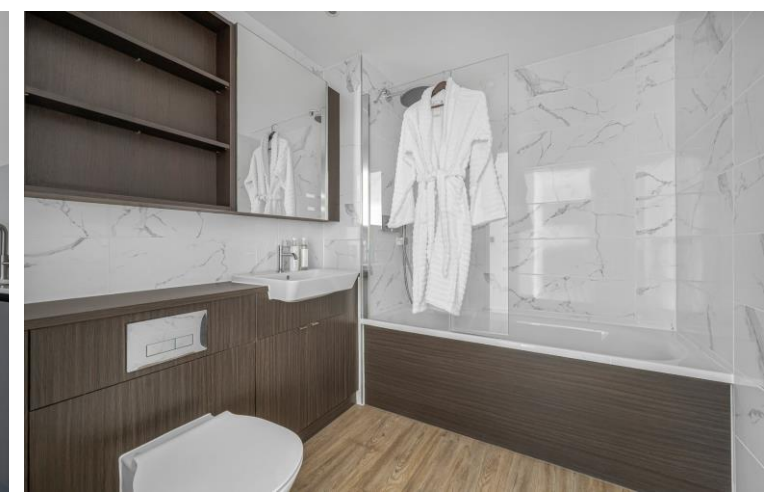
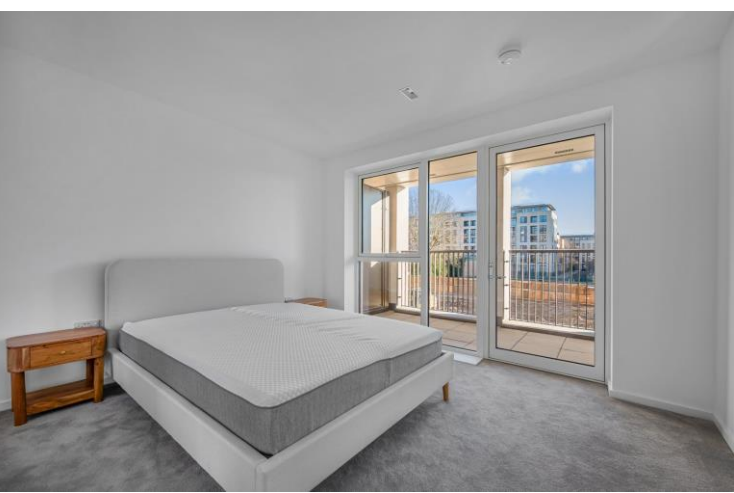




Wheatstone Gardens
Portobello Square, W10

CHESTERTONS





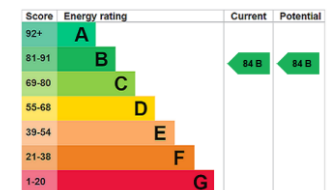
A superbly appointed, newly constructed one bedroom apartment on the first floor of The Park Edition within The Auria, Notting Hill's highly anticipated new development, located just moments from Portobello Road. This elegant residence offers a private balcony with views over Athlone Gardens, in the heart of the development, and benefits from the security of a New Build Guarantee and a concierge service.

The Auria enjoys an enviable position in Notting Hill, placing the area's finest restaurants and boutiques within easy reach, from the vibrant eateries of Golborne Road to the fashion-forward Westbourne Grove. The neighbourhood exudes a distinctive village charm, offering an eclectic mix of shopping, dining, and cultural delights in the very heart of London.

Residents of The Auria will enjoy a suite of luxury amenities, including a concierge service, a state-of-the-art gym, co-working spaces, and a residents' lounge, all set to elevate the living experience.

- Newly built one bedroom apartment
- Private balcony with serene views over Athlone Gardens
- Concierge service and New Build Guarantee
- Close to Portobello Road, Golborne Road, and Westbourne Grove's dining and shopping
- Access to future amenities including residents' gym, co-working spaces, and lounge

Asking Price £700,000



Tenure: Leasehold 997 years 10 months
Service Charge: £2800
Ground Rent: £0
Local Authority: Kensington and Chelsea
Council Tax Band: TBC

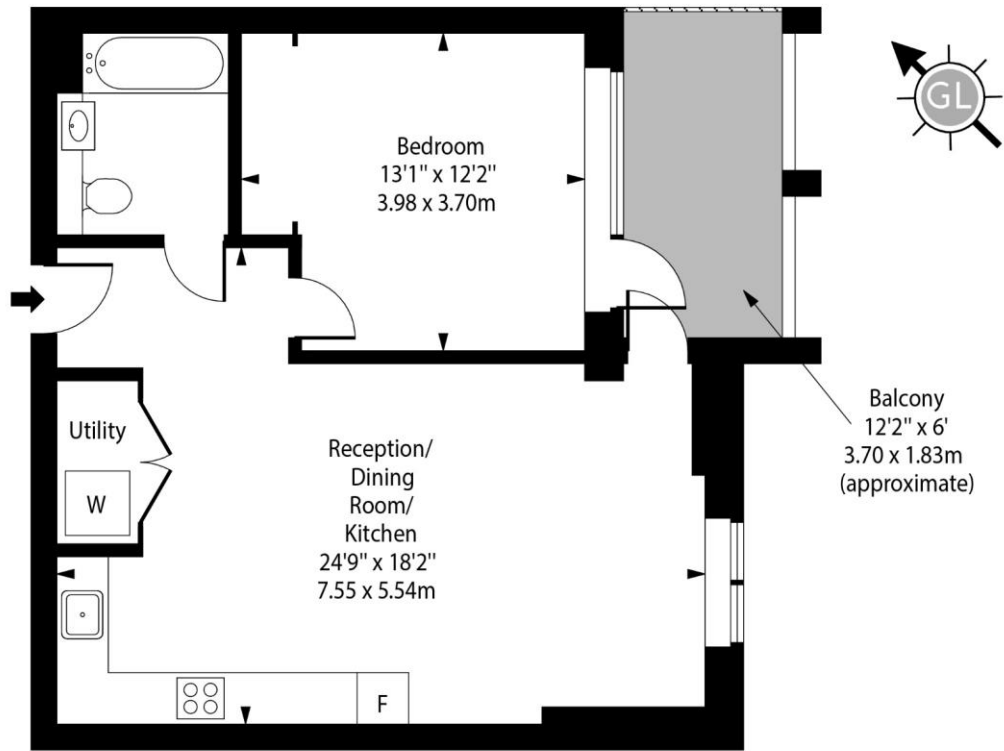
Chestertons Notting Hill Sales

30 Ledbury Road
 Notting Hill
 London
 W11 2AB

nottinghill@chestertons.co.uk
 0203 040 8585

Wheatstone Gardens, W10

○ - Ceiling Height



First Floor

Approx Gross Internal Area 590 Sq Ft - 54.81 Sq M

Every attempt has been made to ensure the accuracy of the floor plan shown. However, all measurements, fixtures, fittings, and data shown are approximate interpretations and for illustrative purposes only. Measured according to the RICS. Not To Scale.

www.goldlens.co.uk

Ref. No. 030138WI

