



7, Youngs Mews, Hertford
SG14 1QT
Price Guide £680,000

 stevenoates.com



7 Youngs Mews, Port Hill, Hertford, Herts, SG14 1QT

Steven Oates are delighted to bring to market this beautiful end of terrace four bedroom mews house located in Hertford town centre. Situated on the river and close to Hartham Park, this stunning family home is set over three floors and is currently set up as a four bedroom, two bathroom home. The ground floor offers a cloakroom, well presented modern kitchen and a spacious reception room that opens up onto a beautiful landscaped garden overlooking the river. On the first floor, there are two double bedrooms, one of which has its own en-suite shower room and an additional bathroom. On the second floor, there are two further bedrooms. To the front of the house there is one private off street parking space.

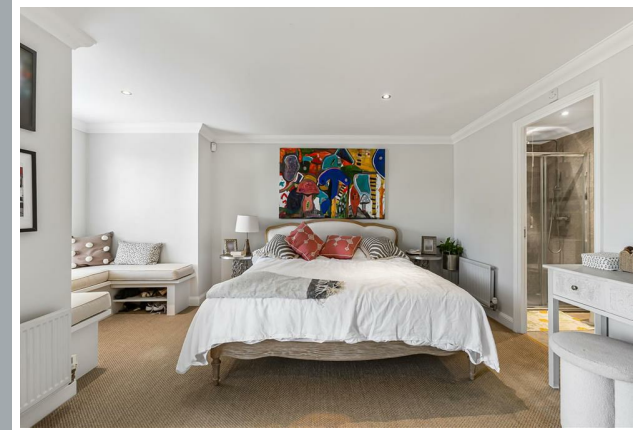
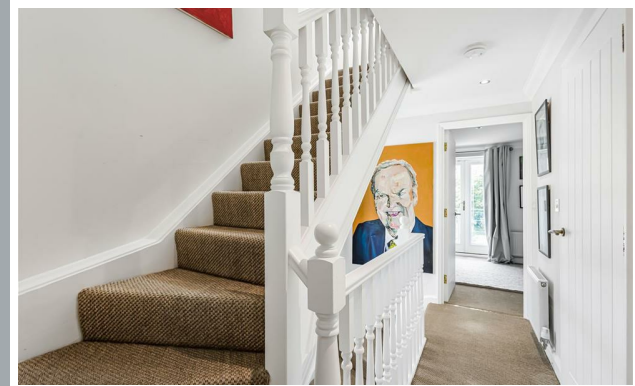
Youngs Mews is an exclusive collection of beautifully designed homes situated in the sought-after Port Hill area of Hertford. Ideally positioned, Youngs Mews benefits from excellent access to Hertford's vibrant town centre, renowned for its independent boutiques, cafés, restaurants and riverside walks. The area is well connected, with Hertford North and Hertford East stations providing direct rail services into London, making it ideal for commuters seeking a balance between town and country living.



70 Fore Street, Hertford, Hertfordshire, SG14 1BY



70 Fore Street, Hertford, Hertfordshire, SG14 1BY

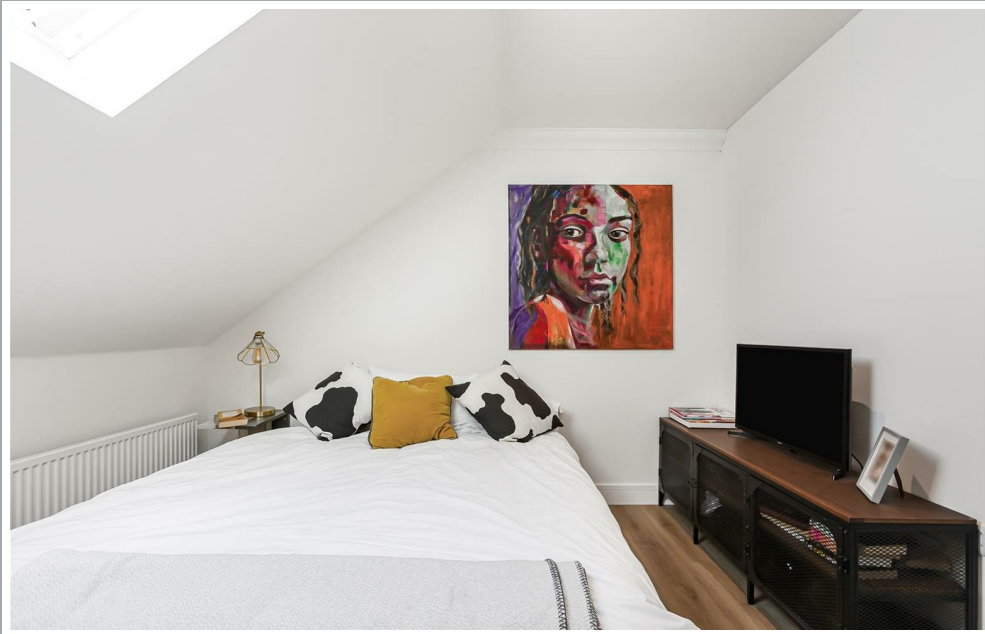


70 Fore Street, Hertford, Hertfordshire, SG14 1BY





70 Fore Street, Hertford, Hertfordshire, SG14 1BY



70 Fore Street, Hertford, Hertfordshire, SG14 1BY



70 Fore Street, Hertford, Hertfordshire, SG14 1BY



Approximate Gross Internal Area 1278 sq ft - 119 sq m

Ground Floor Area 450 sq ft – 42 sq m

First Floor Area 480 sq ft – 45 sq m

Second Floor Area 348 sq ft – 32 sq m



Floor plan produced in accordance with RICS Property Measurement 2nd Edition. Although Pink Plan Ltd ensures the highest level of accuracy, measurements of doors, windows and rooms are approximate and no responsibility is taken for error, omission or misstatement. These plans are for representation purposes only and no guarantee is given on the total square footage of the property within this plan. The figure icon is for initial guidance only and should not be relied on as a basis of valuation.



These particulars, whilst believed to be accurate are set out as a general outline only for guidance and do not constitute any part of an offer or contract. Intending purchasers should not rely on them as statements of representation of fact, but must satisfy themselves by inspection or otherwise as to their accuracy. No person in this firm's employment has the authority to make or give any representation or warranty in respect of the property.



stevenoates.com