



4 Church Terrace, Windsor, Berkshire, SL4 4JG
£359,950

 **HORLER**

4 Church Terrace, Windsor, Berkshire, SL4 4JG

Situated in the sought-after Church Terrace area of Windsor, this charming two-bedroom terraced cottage beautifully combines period character with modern comfort. The property features two spacious reception rooms, a cosy log-burning stove, and two generous double bedrooms, offering flexible and inviting living accommodation. Outside, the rear garden provides a private space for relaxation and entertaining, while the added benefit of off-road parking enhances its appeal. Conveniently located close to local amenities, well-regarded schools, excellent transport links, and Windsor town centre, this delightful home is ideal for first-time buyers, downsizers, or anyone seeking a characterful property in a prime location.



Property Summary

Nestled within the charming Church Terrace area of Windsor, this delightful two-bedroom terraced cottage effortlessly combines character, comfort and convenience. Offering two spacious reception rooms, the property provides versatile living accommodation, ideal for both relaxing and entertaining.

A particular feature of the home is the inviting log-burning stove, which creates a warm and cosy focal point, adding charm and character throughout the cooler months. The well-balanced layout offers ample space for modern living while retaining the cottage's appealing period feel.

Upstairs, the property boasts two generously sized double bedrooms, providing comfortable and peaceful retreats. The bathroom has been thoughtfully designed to meet the demands of contemporary living while complementing the home's overall character.

Outside, the attractive rear garden offers a wonderful space to enjoy the outdoors, whether relaxing with family and friends, dining al fresco, or simply unwinding in a private setting. A further standout benefit is the off-road parking, a highly desirable feature in such a sought-after location.

Ideally positioned close to a range of local amenities, highly regarded schools and excellent transport links, the property offers the perfect balance of tranquillity and accessibility. Windsor's vibrant town centre, with its array of shops, restaurants, cafés and historic attractions, is also within easy reach.

This charming cottage presents an excellent opportunity for first-time buyers, downsizers or anyone seeking a characterful home in a prime Windsor location. Combining period charm with modern practicality, it is a property sure to impress.

General Information

Legal Note

Although these particulars are thought to be materially correct their accuracy cannot be guaranteed and they do not form part of any contract





Church Terrace SL4

Approximate Gross Internal Floor Area = 65.2 sq m / 701 sq ft

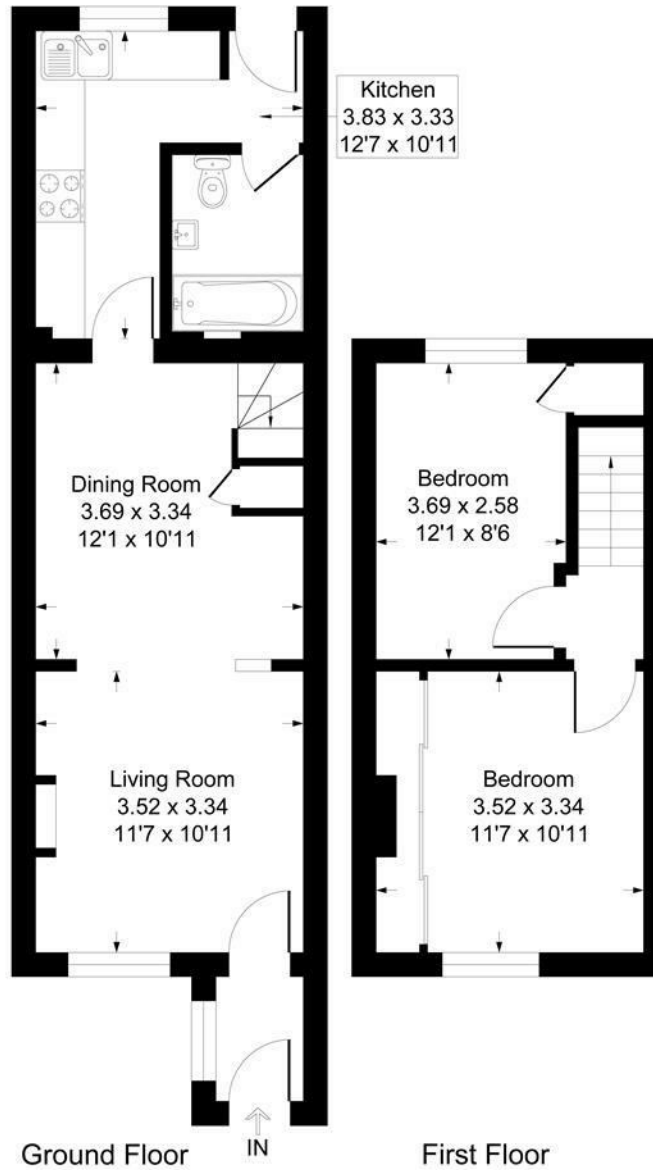


Illustration for identification purposes only, measurements are approximate, not to scale.
Produced By Esjay Property Marketing