



Walton Street, SW3

£825,000

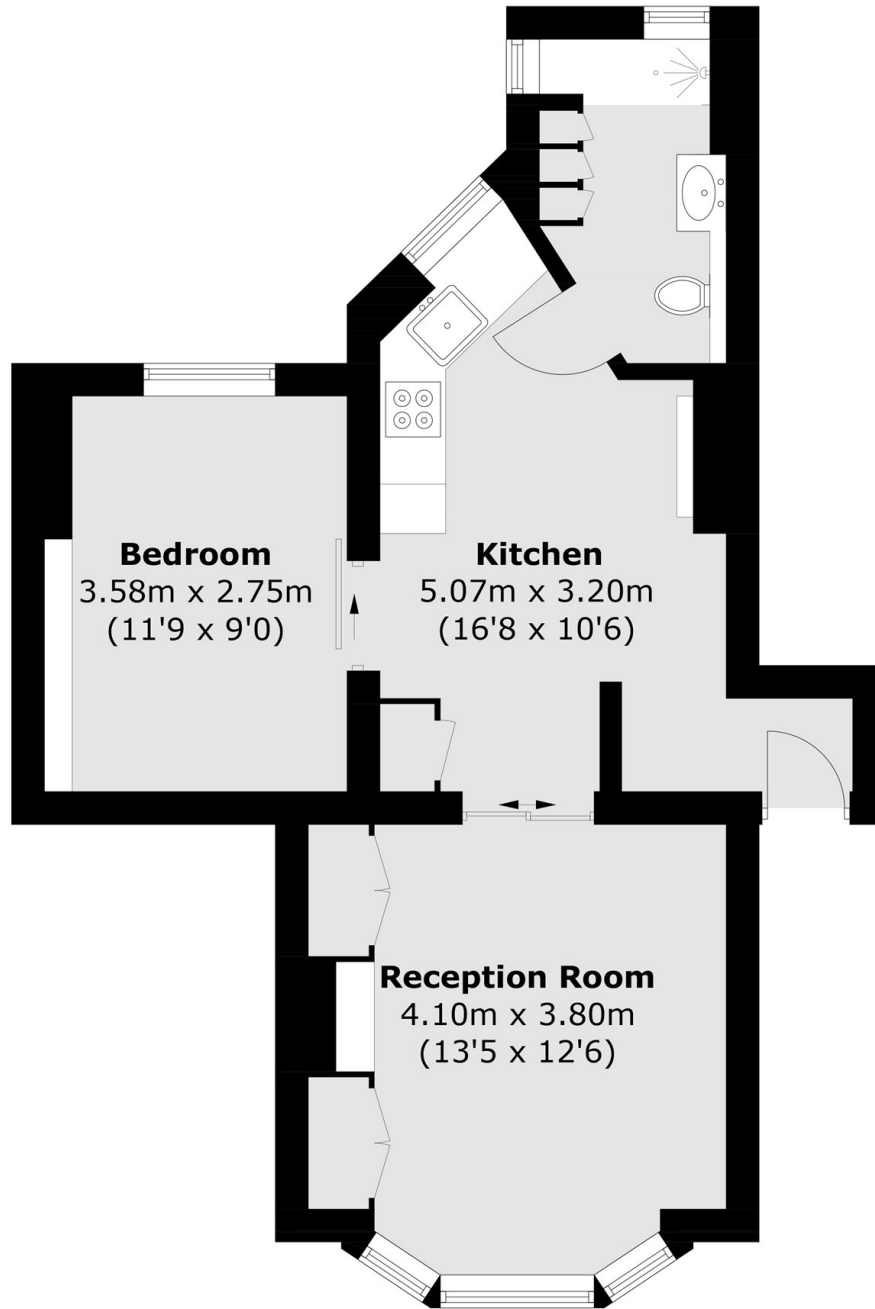
A stunning one bedroom apartment that has been refurbished to a very high standard. This property has a share of the freehold, plenty of built-in storage and would be an ideal London base or rental investment.

The Marlborough is a gated development with its' own porter, on the border of Chelsea and Knightsbridge. A number of local restaurants, cafés and boutique shops are all within easy walking distance.

Features

- Share of Freehold
- Porter
- Excellent Condition
- Gated Development
- Popular Location
- One Bedroom

Walton Street, London, SW3



Raised Ground Floor

Total area (approx.): 46.7 sq. m (502.7 sq. ft)