



4 Tranmere Croft, Darley

£300,000 Freehold



**YOUR AWARD
WINNING AGENT**

#DARINGTOBEDIFFERENT



A beautifully updated three-bedroom semi-detached house occupying a super position within this popular village between Harrogate and Pateley Bridge and benefiting from a good sized garden and garage. The property has been newly modernised to a very high standard and now reveals impressive accommodation, including a superb open plan kitchen and living space, ideal for modern-day living.

This attractive home enjoys a delightful setting surrounded by beautiful open countryside, whilst remaining within easy reach of both Harrogate and Pateley Bridge. The well presented accommodation extends over two floors and is complemented by generous outdoor space, making it an ideal home for a range of buyers.

Council Tax band: B

Tenure: Freehold

EPC Energy Efficiency Rating: D

EPC Environmental Impact Rating: D



GROUND FLOOR

The ground floor comprises a superb open plan living space with sitting area and bay window to the front, overlooking the garden. The modern kitchen is fitted with a range of quality units with quartz worktops and breakfast bar, together with integrated appliances including an induction hob, oven and dishwasher, and there is space and plumbing for a washing machine.

To the rear of the property there is a useful porch with fitted storage and space for a fridge freezer. A conservatory provides an additional sitting or dining area with windows overlooking the garden.

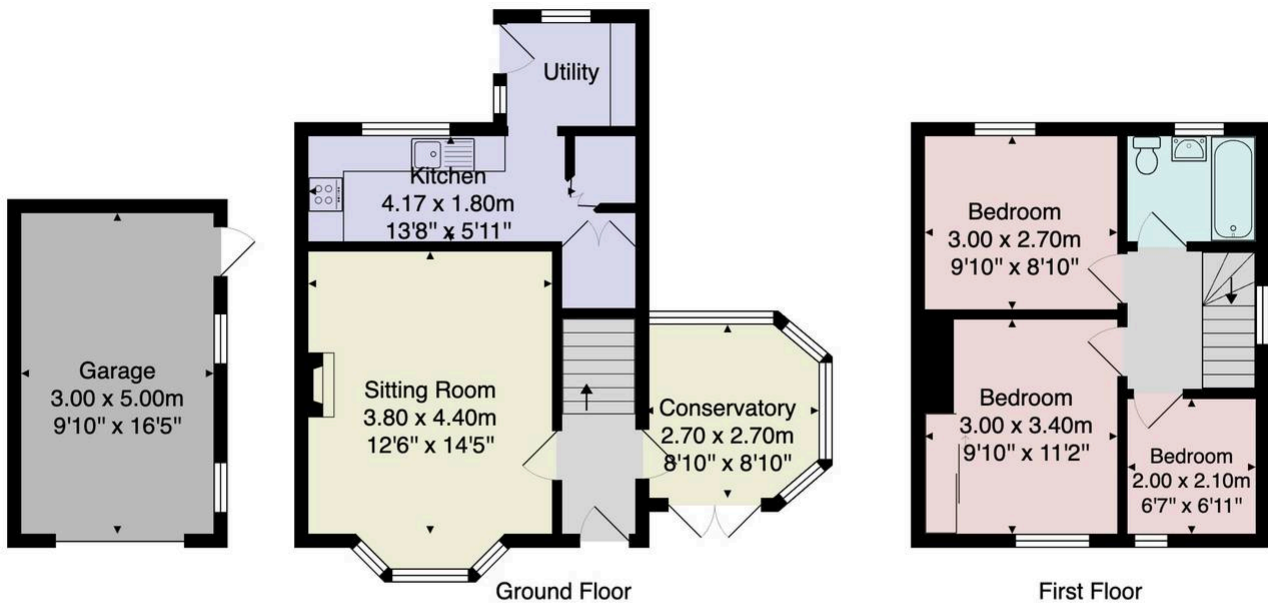
FIRST FLOOR

On the first floor there are three good sized bedrooms together with a modern bathroom fitted with a white suite comprising WC, washbasin and bath with shower above.

OUTSIDE

A particular feature of the property is the generous outdoor space. To the front there is a particularly good sized garden laid mainly to lawn with sitting area, whilst to the rear there is a further gravelled garden. The property also benefits from a single garage.





Total Area: 75.4 m² ... 811 ft² (excluding garage)

All measurements are approximate and for display purposes only.

No liability is accepted by either the agency or Box Property Solutions Ltd as to the exact measurements of the rooms.
 Box Property Solutions Ltd retains the copyright on this plan and allows agents to use it with agreed permission.

