



## Station Road, N3

£700,000

This well presented four bedroom house with a private garage offering off street parking

Situated just off Regent's Park road, close to Finchley Central station and local amenities that include an array of restaurants, coffee shops and retail outlets. Nearby schools include Pardes House Primary School, Akiva School and St Theresa's Catholic Primary School.

### Features

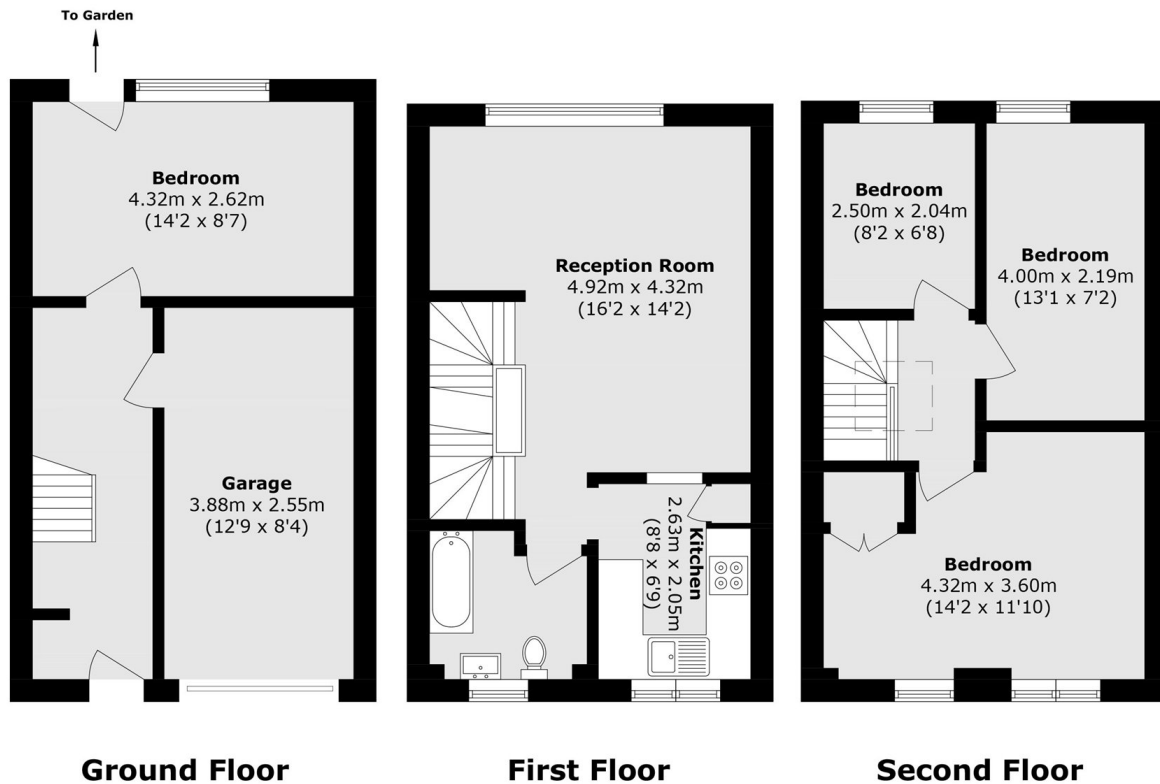
- Four bedrooms
- Fully fitted bathroom
- Garage
- Off Street Parking
- Double glazed
- Private Entrance



**Station Road, N3**



# Station Road, London, N3



Total area (approx.): 99.0 sq. m (1065.6 sq. ft)  
(Including Garage)