

Rosemary Road, Poole, Dorset BH12 3HB



£1,675 Per Calendar Month



****To Let – Modern 3-Bedroom Semi-Detached House****
****Rosemary Road, Poole, Dorset, BH12 3HB****
****£1,675 PCM | Available from 1st June****

Belvoir Bournemouth are delighted to present this modern and well-appointed three-bedroom semi-detached home, ideally located in a popular residential area of Poole.

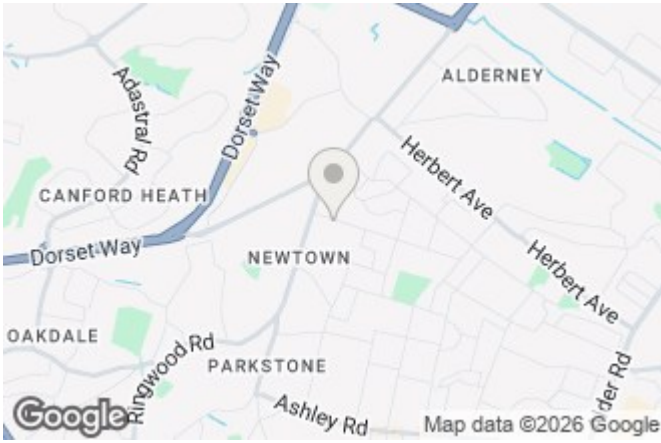
The property offers bright and spacious accommodation throughout, featuring a stylish open-plan lounge/diner—perfect for both relaxing and entertaining—and a contemporary fitted kitchen with modern finishes.

Upstairs, there are three well-proportioned bedrooms along with a family bathroom, while downstairs benefits from the convenience of a separate W.C.

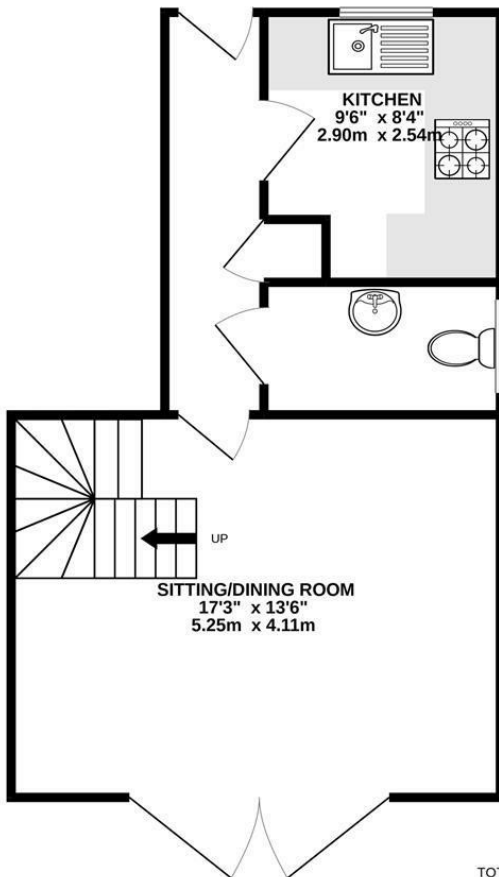
Externally, the property boasts a private garden and off-road parking via a driveway.

BELVOIR!

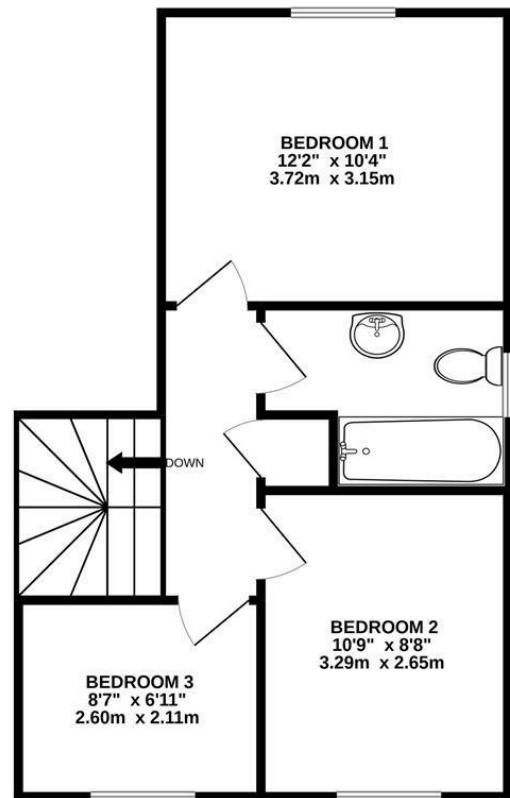
Belvoir Bournemouth
122-124 Castle Lane West, Bournemouth, Dorset, BH9 3JU



GROUND FLOOR
400 sq.ft. (37.2 sq.m.) approx.



1ST FLOOR
405 sq.ft. (37.6 sq.m.) approx.



TOTAL FLOOR AREA : 805 sq.ft. (74.8 sq.m.) approx.

Whilst every attempt has been made to ensure the accuracy of the floorplan contained here, measurements of doors, windows, rooms and any other items are approximate and no responsibility is taken for any error, omission or mis-statement. This plan is for illustrative purposes only and should be used as such by any prospective purchaser. The services, systems and appliances shown have not been tested and no guarantee as to their operability or efficiency can be given.
Made with Metropix ©2022.

Energy Efficiency Rating		Current	Potential
Very energy efficient - lower running costs			
(92 plus) A			
(81-91) B			
(69-80) C			
(55-68) D			
(39-54) E			
(21-38) F			
(1-20) G			
Not energy efficient - higher running costs			
England & Wales		EU Directive 2002/91/EC	

Environmental Impact (CO ₂) Rating		Current	Potential
Very environmentally friendly - lower CO ₂ emissions			
(92 plus) A			
(81-91) B			
(69-80) C			
(55-68) D			
(39-54) E			
(21-38) F			
(1-20) G			
Not environmentally friendly - higher CO ₂ emissions			
England & Wales		EU Directive 2002/91/EC	