



CHASE APARTMENTS
LONDON



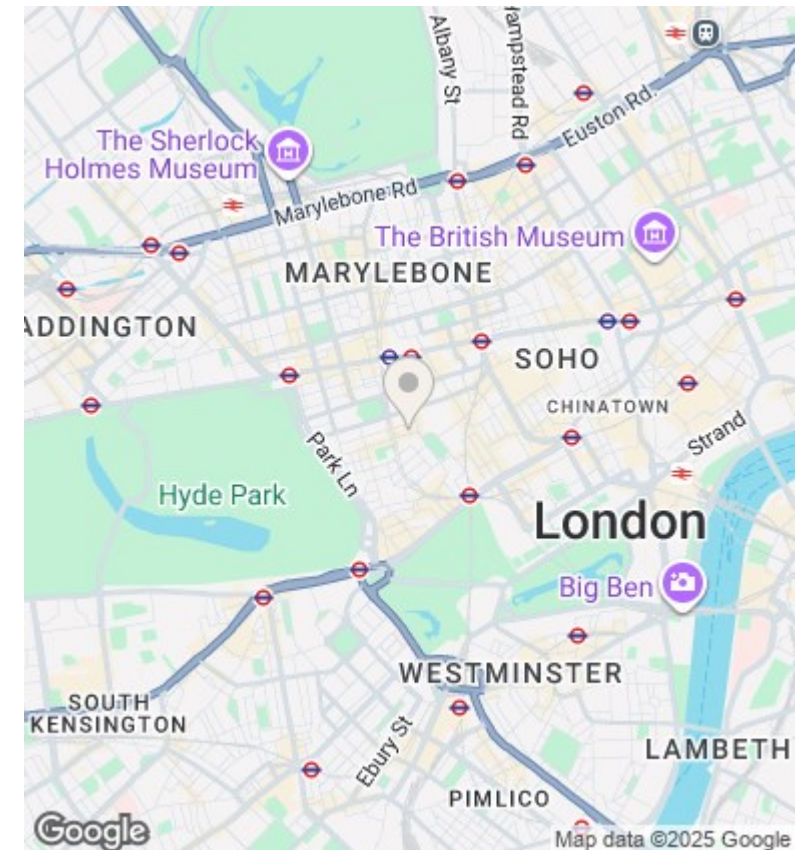
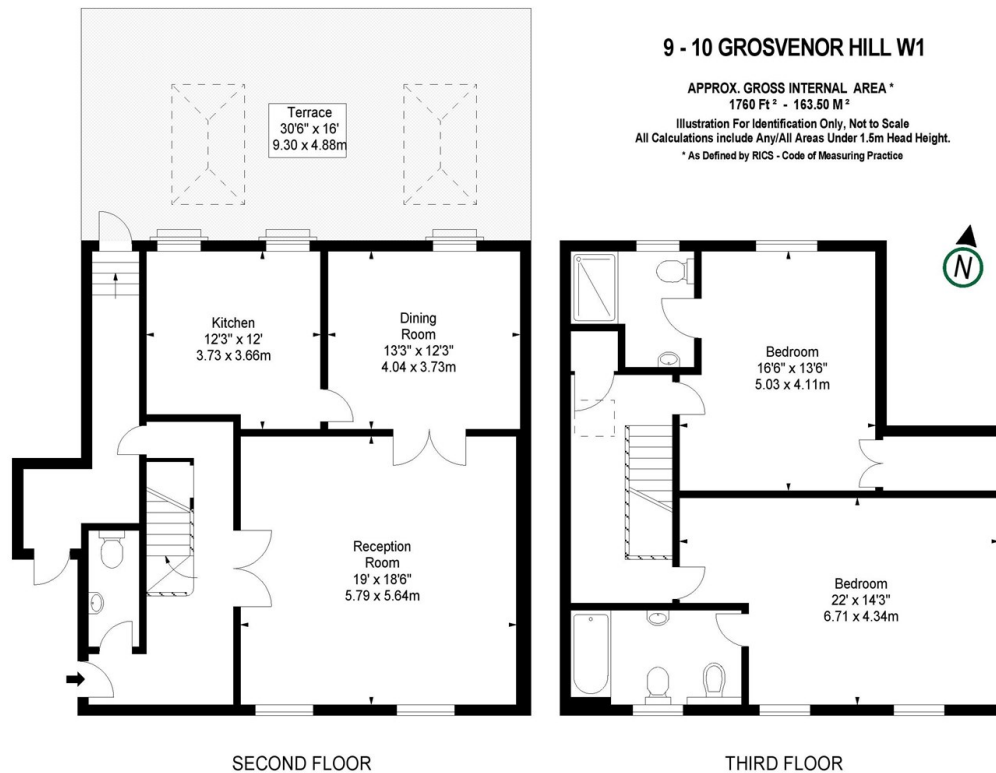
Grosvenor Hill, Mayfair W1K 3QA

£4,200 Per Week

- Duplex apartment
- Large private roof terrace
- Two interconnecting reception rooms
- Crestron home system
- Two double bedrooms

Grosvenor Waterside, 32 Gatliff Road, Belgravia, London, SW1W 8QN
02077225022

<http://www.chaseapartments.com/>



Viewings

Viewings by arrangement only.
Call 02077225022 to make an appointment.

Council Tax Band

H

EPC Rating:

E

| Energy Efficiency Rating | | |
|---|---------|-------------------------|
| | Current | Potential |
| Very energy efficient - lower running costs | | |
| (92 plus) A | | |
| (81-91) B | | |
| (69-80) C | | 70 |
| (55-68) D | | |
| (39-54) E | 46 | |
| (21-38) F | | |
| (1-20) G | | |
| Not energy efficient - higher running costs | | |
| England & Wales | | EU Directive 2002/91/EC |