

## Sawyers Lawn, W13

£360,000

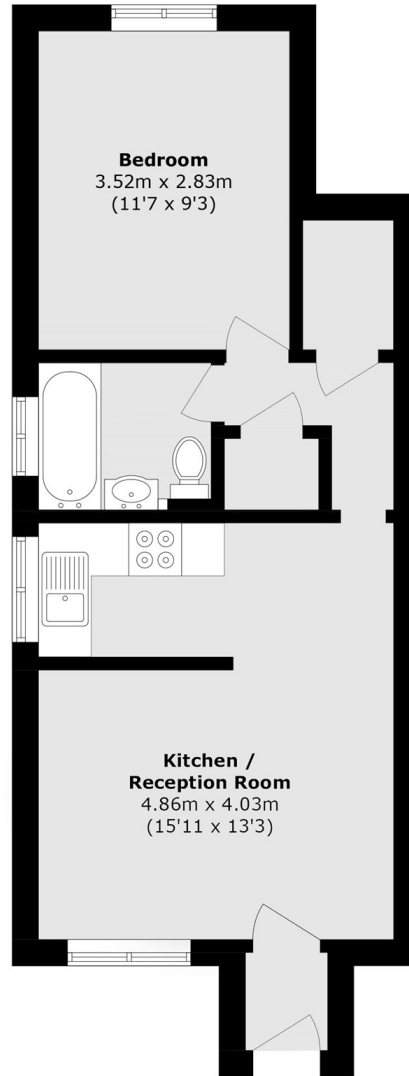
This well-presented one-bedroom ground floor flat is set within a quiet residential cul-de-sac and is offered in excellent decorative order throughout. The property benefits from a bright and spacious lounge, a private front garden, and the added advantage of a lease over 900 years and a Share of Freehold.

Conveniently located, the property is just a short walk from Drayton Green station, while both Hanwell and West Ealing stations including access to the Elizabeth Line (Crossrail) are just over half a mile away.

### Features

- Share Of Freehold
- Ground Floor
- One Bedroom
- Parking Space
- Open Plan Living
- Cul De Sac

# Sawyers Lawn, London, W13



Total area (approx.): 40.2 sq. m (432.7 sq. ft)