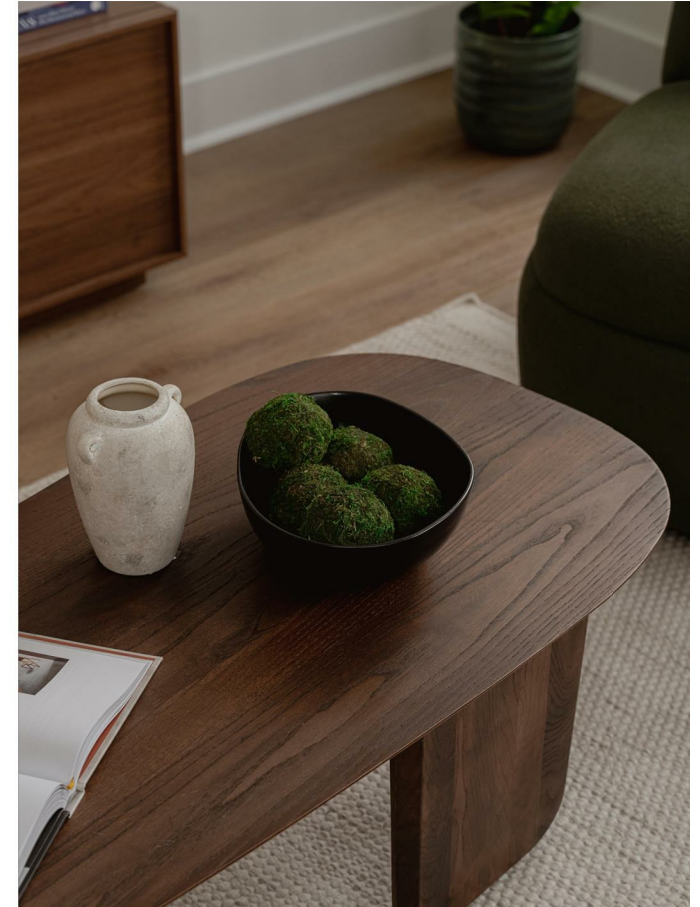




Church Street, Reigate

Offers in Excess of £300,000





“

Introducing Maddison House, a boutique development of six contemporary apartments in central Reigate, thoughtfully converted to offer modern comfort and convenience. With four two bedroom and two one bedroom homes, all with the added bonus of allocated parking.

”

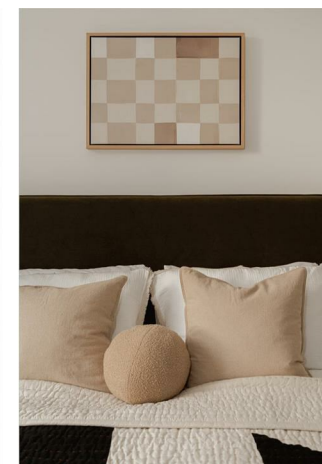
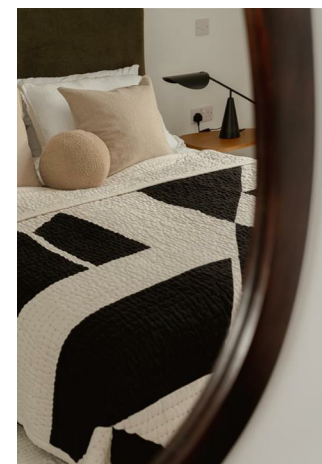


Maddison House is an exclusive collection of six newly converted apartments, thoughtfully designed with modern living in mind. Located moments from Reigate's bustling High Street, these homes offer high-quality finishes throughout.

This one bedroom apartment is located on the first floor. The open plan kitchen/living space has a vaulted ceiling and two tone units in contrasting charcoal and stone grey, with white galaxy quartz worktops, which compliment the units beautifully. The kitchens are fully fitted with appliances, including ceramic induction hobs, dishwashers, fridge freezers, ovens and microwaves.

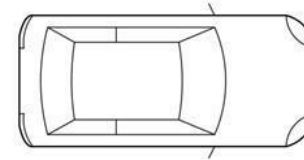
Fitted with luxury vinyl flooring in European Oak throughout the living space, and the contrast of soft carpets to the bedroom, creating a touch of luxury underfoot. The bathroom is flooded with natural light from the skylight above and fitted with Scudo wall hung vanity units and Scudo sanitaryware, whilst the white porcelain floor tiles makes the space feel fresh.

Outside, there is a communal decked terrace which leads up to the Castle grounds, home to the ruins of Reigate Castle. Each apartment comes with an allocated parking space to the rear and there are two further spaces with EV charging points which are for communal use.

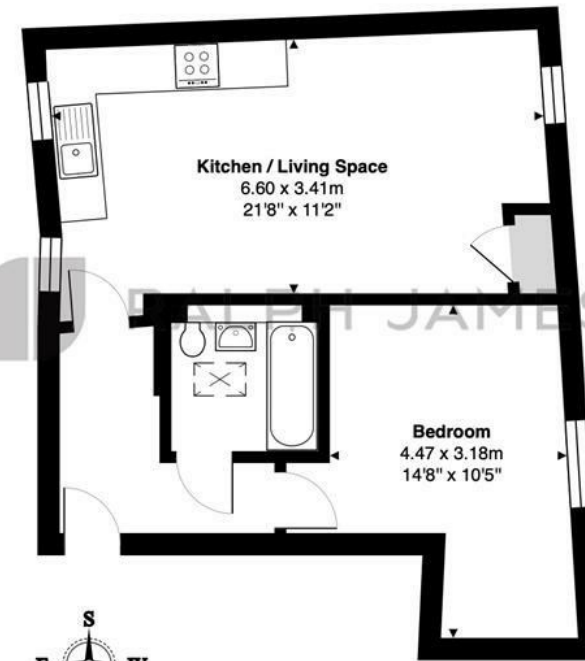


Need to know

- One bedroom first floor apartment
- Newly converted development of just six stunning apartments
- High ceilings and large sash windows
- Vaulted ceiling in the open plan living space, adding to the feeling of space and light
- Central Reigate location offering excellent convenience for the High Street and train station
- Allocated parking for each apartment as well as two EV charging points
- Stunning, two tone, matt finish kitchen units in charcoal and stone grey with complimentary white galaxy quartz worktops
- European oak style, luxury vinyl flooring in the living space with soft 'glacier white' carpets to the bedrooms
- Communal outside terrace, leading to the Castle Grounds



1x Allocated Parking Space



First Floor

Flat 3 Maddison House, Reigate

Total Area: 46.7 m² ... 503 ft²

FOR ILLUSTRATIVE PURPOSES ONLY.

Whilst every attempt has been made to ensure the accuracy of the floor plan shown, all measurements, positioning, fixtures, features, fittings and any other data shown are an approximate interpretation for illustrative purposes only and are not to scale.

No responsibility is taken for any error, omission, miss-statement or use of data shown.

The above statement applies to both 'Still Moving London LTD' and the Company or individual displaying this floor plan.

Unauthorised reproduction prohibited.

Â© Still Moving London LTD (www.stillmoving.london)

Interested?

reigate@ralphjames.co.uk
01737 333677

ralphjames.co.uk

