



Connells

Nettlecombe
Shaftesbury



Property Description

A well-presented three-bedroom mid-terrace house, finished to a high standard throughout. The ground floor offers a welcoming front-facing lounge and a spacious kitchen/diner to the rear, ideal for family living and entertaining, with the added benefit of a separate utility room. Upstairs are three well-proportioned bedrooms and a family bathroom. Outside, the property features a fully enclosed rear garden with gated access leading to a dropped kerb, providing convenient off-road potential.

Entrance Porch

UPVC door to the front into the porch, door to the entrance hall.

Entrance Hall

Spacious entrance hall with stairs to the first floor, door to the downstairs WC and a storage cupboard.

Cloakroom

Double glazed window to the front, WC and a wash hand basin.

Lounge

Double glazed window to the front and a radiator.

Kitchen

Two double glazed windows to the rear, door into the utility room, large larder cupboard, fitted kitchen with wall and base units, work surfaces, electric oven and hob, space for an under counter fridge, tiling, stainless steel sink and drainer and the gas central heating boiler.

Utility Room

Double glazed window to the rear, door to the garden, plumbing for a washing machine, space for a tumble dryer, work surface and a wall cupboard.

Landing

Spacious storage cupboard and access to the loft which has a ladder.

Bedroom One

Double glazed window to the front, radiator and a large storage cupboard/wardrobe.

Bedroom Two

Double glazed window to the rear, cupboard and a radiator.

Bedroom Three

Double glazed window to the front and a radiator.

Bathroom

Double glazed frosted window to the rear, P shaped bath with an electric shower over, WC, wash hand basin, heated towel rail, tiling and a mirrored wall cabinet.

Front Garden

To the front the garden is fenced with a gate and a path leading to the front porch with the remainder laid to gravel.

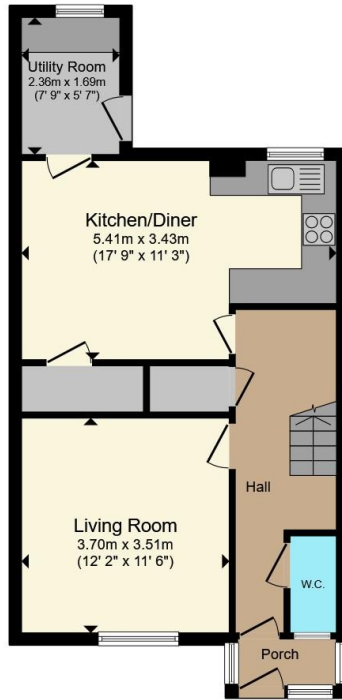
Rear Garden

To the rear there is a patio seating area with the remainder laid to lawn, shed to the side and gates to the rear which leads to a dropped curb. This adds potential for off street parking to the rear of the property.

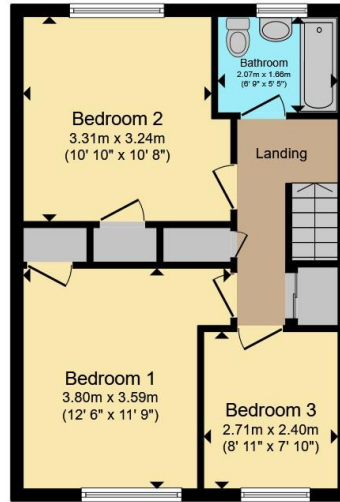
Parking

On street parking as you enter Nettlecombe on the left.





Ground Floor



First Floor

Total floor area 93.7 m² (1,008 sq.ft.) approx

This floor plan is for illustrative purposes only. It is not drawn to scale. Any measurements, floor areas (including any total floor area), openings and orientation are approximate. No details are guaranteed, they cannot be relied upon for any purpose and they do not form part of any agreement. No liability is taken for any error, omission or misstatement. A party must rely upon its own inspection(s). Powered by www.propertybox.io



To view this property please contact Connells on

T 01747 854 001
E shaftesbury@connells.co.uk

34 High Street
 SHAFTESBURY SP7 8JG

EPC Rating: D Council Tax
 Band: B

view this property online connells.co.uk/Property/SFT306280

Tenure: Freehold



1. MONEY LAUNDERING REGULATIONS Intending purchasers will be asked to produce identification documentation at a later stage and we would ask for your co-operation in order that there will be no delay in agreeing the sale. 2. These particulars do not constitute part or all of an offer or contract. 3. The measurements indicated are supplied for guidance only and as such must be considered incorrect. Potential buyers are advised to recheck measurements before committing to any expense. 4. We have not tested any apparatus, equipment, fixtures, fittings or services and it is in the buyers interest to check the working condition of any appliances.

Connells Residential is registered in England and Wales under company number 1489613, Registered Office is Cumbria House, 16-20 Hockliffe Street, Leighton Buzzard, Bedfordshire, LU7 1GN. VAT Registration Number is 500 2481 05.

See all our properties at www.connells.co.uk | www.rightmove.co.uk | www.zoopla.co.uk

Property Ref: SFT306280 - 0011