



MULBERRY SQUARE, SW1W

£14,000,000

Three bedroom suites
Secure parking
Concierge, gym, pool
Fourth floor
Private balconies
Energy rating b

@marshandparsons
marshandparsons.co.uk

MARSH &
PARSONS

ABOUT THE PROPERTY

Recently constructed in the classical Georgian architectural style, and showcasing exquisite craftsmanship, is this exclusive lateral apartment, positioned in arguably the finest development in prime central London, known as Chelsea Barracks.

This block is located just off Chelsea Bridge Road, opposite the Royal Hospital Chelsea, and Ranelagh Gardens, and is convenient for the many amenities found in and around Sloane Square.

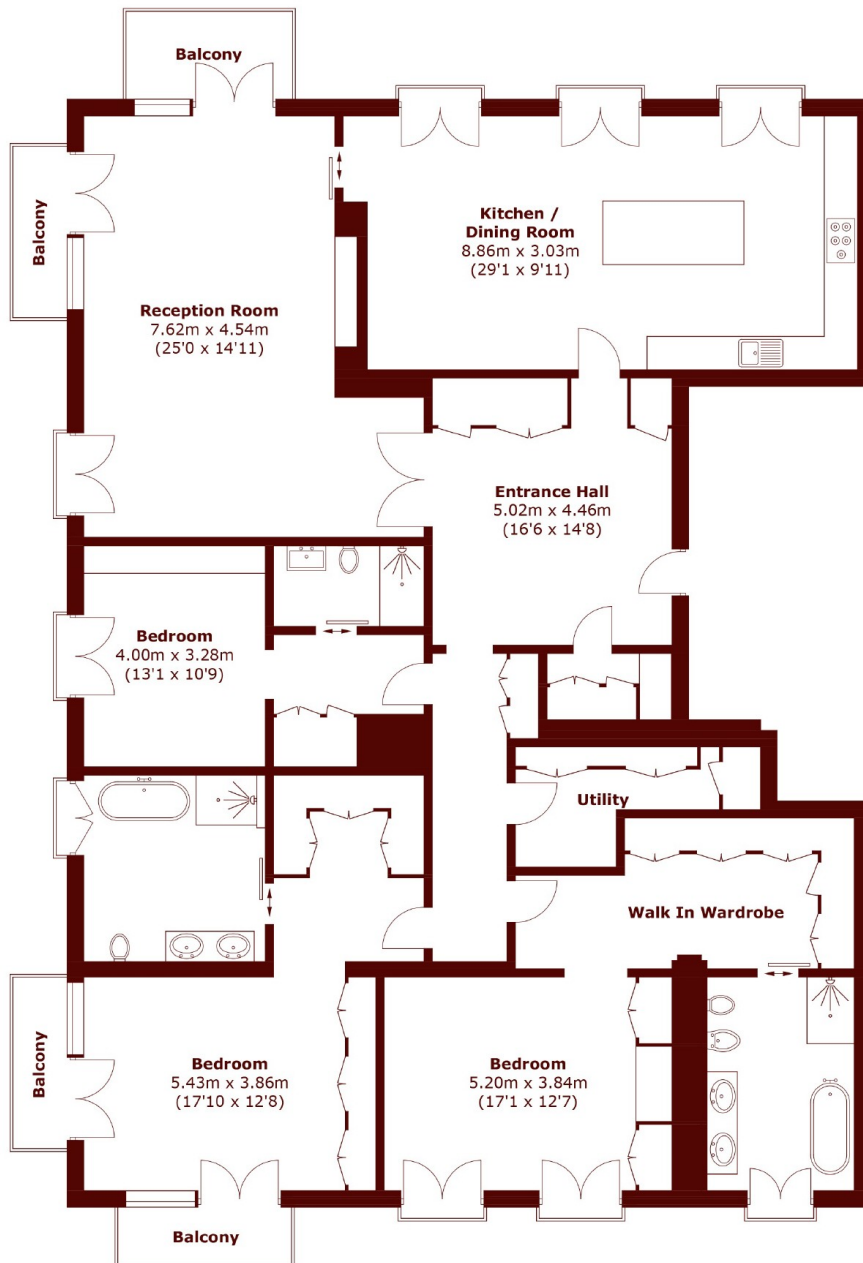








STEP INSIDE MULBERRY SQUARE



Total area (approx.): 248.9 sq. m (2,679.1 sq. ft)
Balcony area (approx.): 14.1 sq. m (151.8 sq. ft)

Pimlico & Westminster
020 7590 0800

Energy Rating: B We aim to make our particulars both accurate and reliable. However, they are not guaranteed; nor do they form part of an offer or contract. If you require clarification on any points then please contact us, especially if you're traveling some distance to view. Please note that appliances and heating systems have not been tested and therefore no warranties can be given as to their good working order

MARSH &
PARSONS