

PS

Flat 6 Shore Point, 7 Brownsea Road, Poole - BH13 7QW

£2,550 PCM



Flat 6, Shore Point 7 Brownsea Road

Sandbanks, Poole

Shore Point is a beautifully presented south west facing duplex penthouse apartment situated in heart of the famous Sandbanks Peninsula. The property benefits from open plan contemporary living and is within a short walk of the golden, Blue Flag beaches of Sandbanks and close to two of the five yacht clubs.

- Contemporary duplex penthouse
- 3 Double bedrooms & 2 bathrooms (1 ensuite)
- South west facing balcony
- Sandbanks Peninsula
- Pets & holiday lets are allowed
- Underground secure parking
- Approx. 120 sq.m / 1,300 sq.ft
- EPC Rating: C
- Council Tax Band F £3,257.14
- Unfurnished, Available 16.01.2026

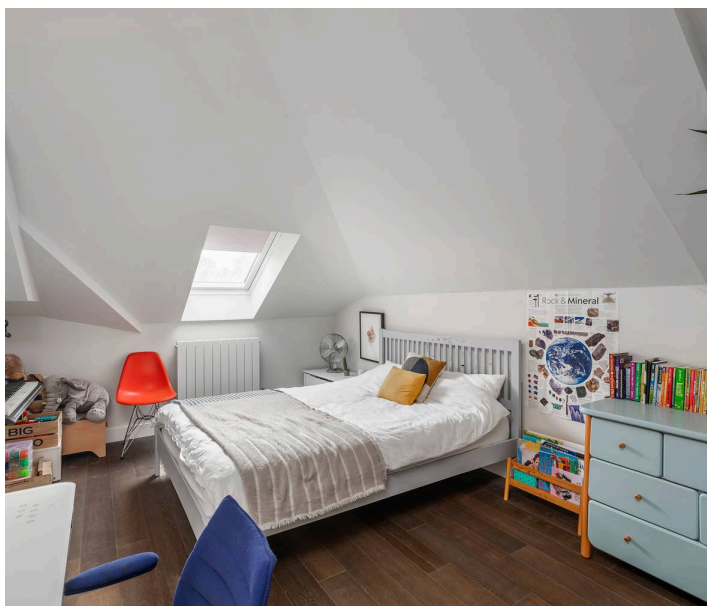


The entrance to the building is via a secure communal door into the lobby, where there is a lift serving all floors including down to the underground carpark where Apartment 6 has an allocated space.

On entering the penthouse itself, you are greeted by the internal hallway which services two of the bedrooms and the main open plan living area. The open plan kitchen is well presented and is fully fitted with oven, hob, dishwasher and washing machine. The kitchen area flows through to the lounge with the dining area at the rear of the room where there is also access onto a sunny south-west facing balcony. There is a separate WC for convenience. Also on this level, there are two of the three bedrooms, each with an ensuite. A set of wooden stairs goes up to the first floor where the third bedroom is situated, which is an ideal guest space.

The contemporary apartment block has an art-deco feel to it and can be used for holiday lettings and pets are also allowed on licence, making this an ideal investment opportunity.

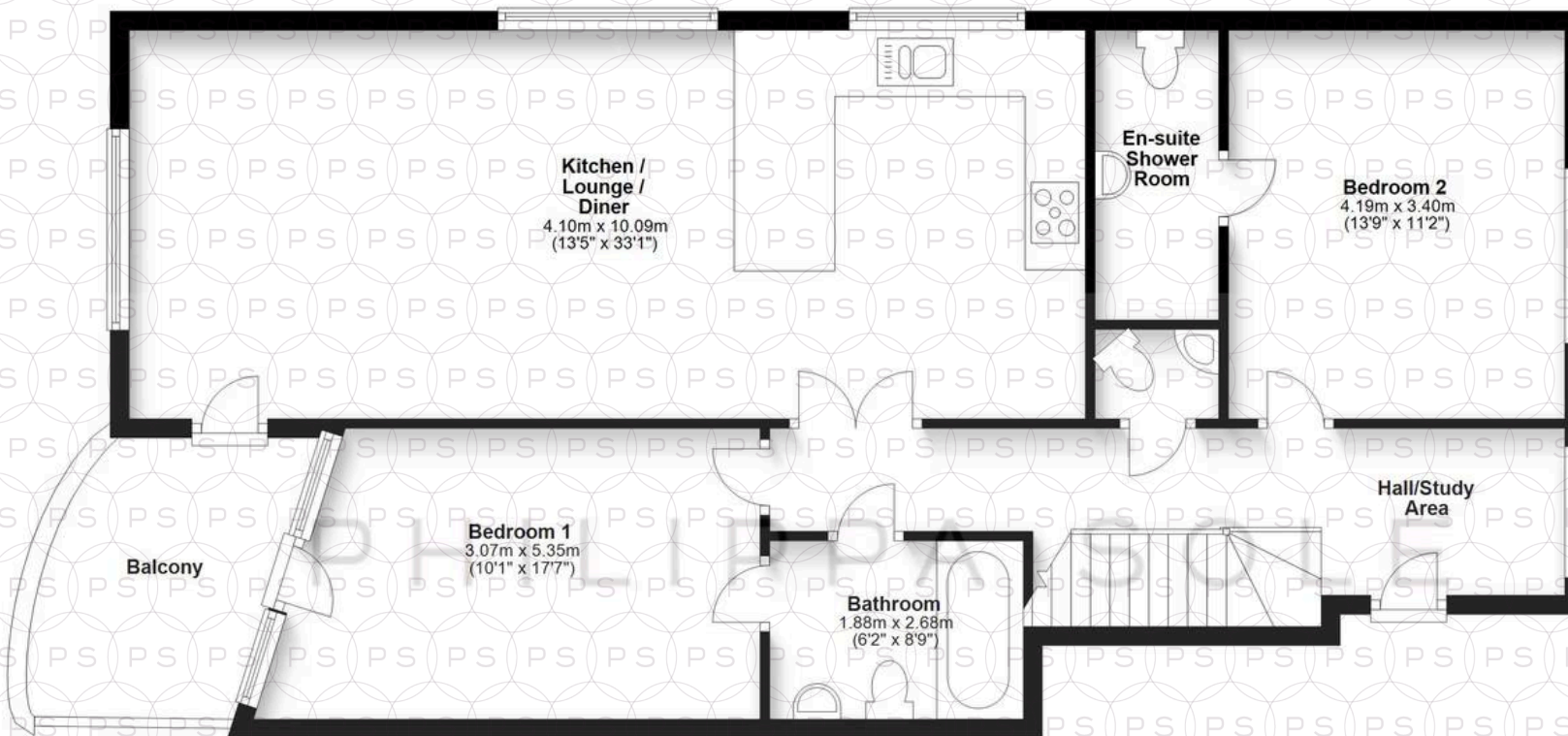
Shore point, is situated in the heart of the Sandbanks Peninsula just 250m from the pathway to the golden Blue Flag sandy beaches of Sandbanks. Conveniently this is a dog friendly beach all year round. The chain ferry is also a short walk providing access to Studland Beach with Corfe Castle and Swanage beyond.





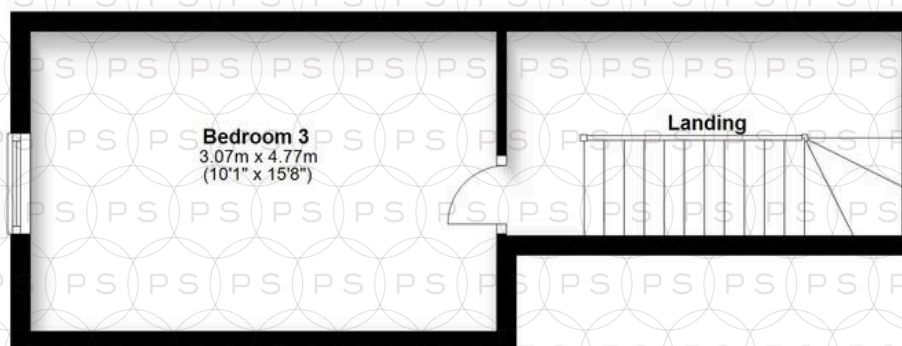
First Floor

Approx. 97.4 sq. metres (1048.1 sq. feet)



Second Floor

Approx. 23.3 sq. metres (251.1 sq. feet)



Total area: approx. 120.7 sq. metres (1299.2 sq. feet)



Philippa Sole Ltd

Philippa Sole, 3A Springfield Road, Ashley Cross - BH14 0LG

01202 747999 • lettings@philippasole.co.uk • www.philippasole.co.uk

All statements in these particulars are provided without responsibility on the part of Philippa Sole Ltd or the vendor. Neither Philippa Sole Ltd nor any individual employed by or acting on its behalf is authorised to make any representation or warranty regarding this property. Room measurements are approximate, and no detailed surveys, service inspections, or fittings tests have been conducted.