



Ulfkell Road, Thetford, IP24 3JP

Rent - £210,000 Deposit -

Are you looking to be situated towards the southern part of the town in a house which has been fully renovated? This extremely well presented family home should make your viewing shortlist!

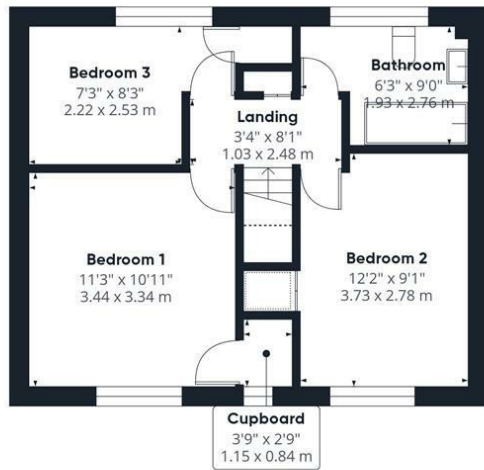
- SITUATED TO THE SOUTH OF THETFORD
- EASY ACCESS TO THE A11
- FULLY RENOVATED
- MODERN ACCOMMODATION THROUGHOUT
- MID TERRACED HOUSE
- THREE BEDROOMS
- REPLACEMENT COMBI BOILER
- FULLY ENCLOSED REAR GARDEN
- GREAT FIRST TIME PURCHASE
- CHAIN FREE



Council Tax Band: A - EPC Rating: C 73



Ground Floor



Approximate total area⁽¹⁾

835 ft²
77.6 m²

Reduced headroom

12 ft²
1.1 m²

(1) Excluding balconies and terraces

Reduced headroom
..... Below 5 ft/1.5 m

Calculations reference the RICS IPMS 3C standard. Measurements are approximate and not to scale. This floor plan is intended for illustration only.

GIRAFFE 360

