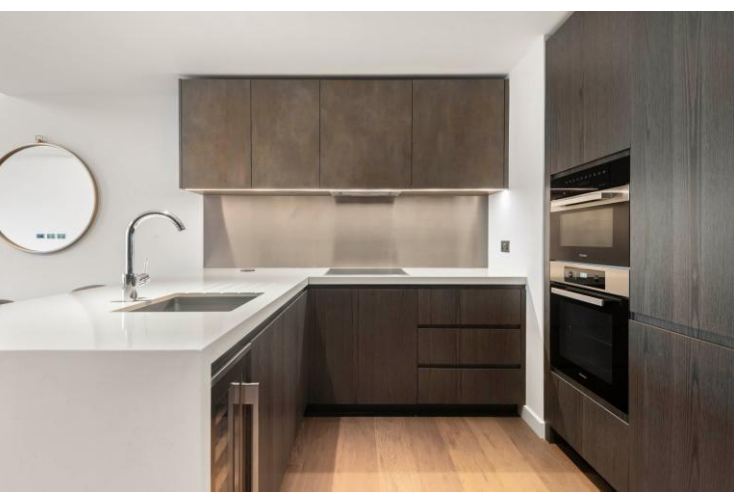




Thames City  
8 Carnation Way, SW8

CHESTERTONS





Stunning one bedroom apartment located in the sought after Thames City Development.

The property comprises a spacious double bedroom with built in storage, luxurious bathroom, a large open-concept living area with a large, fully fitted kitchen with stunning river views.

Residents will benefit from underfloor heating, air conditioning and the outstanding amenities, such as a 30m swimming pool, a fully equipped gym, spa, sauna, cinema room, KTV room, and various communal spaces such as the library, residents lounge & bar and dining area.

Newly opened Nine Elms tube station and Vauxhall tube and mainline station are moments away from the development to get you around London. You may also choose Thames Clipper service down the river.

This development has been finished with a perfect combination of inventive contemporary living in a historic London location within green surroundings. It is a place where you can enjoy city views over the City of London and experience the absolute best of international culture, entertainment, retail, and the Westminster

- Bright and Spacious
- Swimming Pool
- Resident Gym
- 24 Hour Concierge
- Meetings Rooms
- Fantastic View

**£4,333.33 pcm**

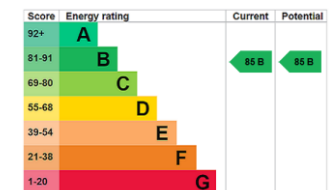
Additional tenant charges apply (fees apply to non-AST tenancies only)

Tenancy Agreement Fee: £300

References per Tenant/Guarantor: £60

Inventory check (approx. £100 – £250 inc. VAT)

[chestertons.co.uk/property-to-rent/applicable-fees](http://chestertons.co.uk/property-to-rent/applicable-fees)



**Minimum Term:** 12 months  
**Deposit Required:** £5,000.00  
**Local Authority:** London Borough of Wandsworth  
**Council Tax Band:** E  
**EPC Rating:** B  
**Furnished**

**Chestertons Battersea Park & Nine Elms Lettings**

62-64 Battersea Bridge Road  
 London  
 SW11 3AG

batterseapark@chestertons.co.uk  
 02030408269  
[chestertons.co.uk](http://chestertons.co.uk)

# Carnation Way, SW8

Approximate gross internal area

63.46 sq m / 683 sq ft

Key :  
CH - Ceiling Height



## Twelfth Floor

This plan is not to scale and must be used as layout guidance only. All measurements and areas are approximate and should not be relied upon to provide accurate information. This plan must not be relied upon when making property valuations, design considerations or any other such relevant decisions. We accept no responsibility or liability (whether in contract, tort or otherwise) in relation to any loss whatsoever arising from or in connection with any use of this plan or the adequacy, accuracy or completeness of it or any information within it.

Chesterton UK Services Limited trading as Chestertons for themselves and for the vendor of this property whose agents they are, give notice that (i) these particulars do not constitute any part of an offer or contract, (ii) all statements contained within these particulars are made without responsibility on the part of Chestertons or the vendor, (iii) whilst made in good faith, none of the statements contained within these particulars are to be relied upon as a statement or representation of fact, (iv) any intending purchasers must satisfy themselves by inspection or otherwise as to the correctness of each of the statements contained within these particulars, (v) the vendor does not make or give either Chestertons or any person in their employment any authority to make or give representation or warranty whatsoever in relation to this property. Wide angle lenses may be used. ©Copyright Chestertons | Chesterton Global Ltd | Registered Office 5th Floor, The Lantern, 75 Hampstead Road, London, NW1 2PL Registered Company Number 05334580.



This paper is  
100% recyclable