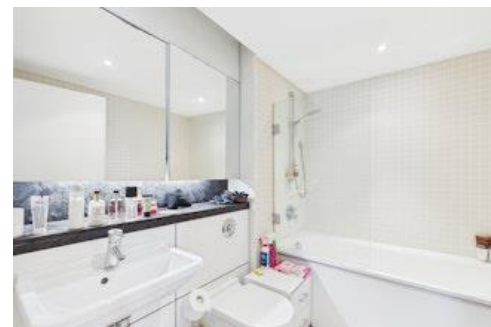




Beetham Tower Holloway Circus Queensway, OIRO £115,000



Leasehold | EPC rating: C

- Great Location
- 1 Bedroom Apartment
- Double bedroom

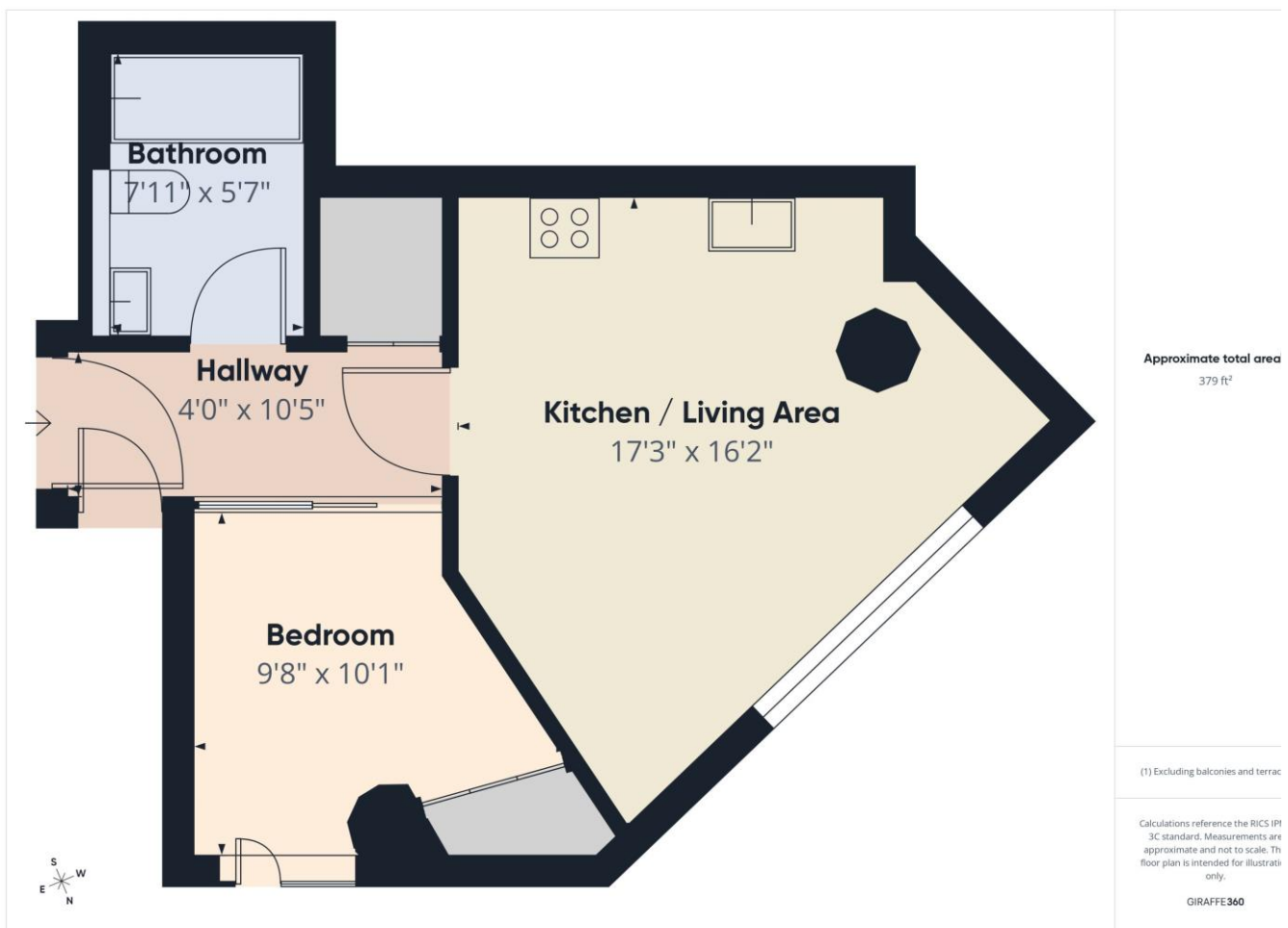
- City Views
- Open plan kitchen diner
- Long Lease

Description

The apartment enjoys a prime city-centre location, placing you within easy reach of Birmingham's vibrant business district, shopping, dining, and transport links. One of its standout features is the spectacular panoramic outlook, with breathtaking views stretching across Birmingham's skyline—perfect for enjoying both daytime cityscapes and evening lights. Combining convenience, style, and an unbeatable vantage point, this property is perfectly suited for those seeking a modern urban lifestyle in a highly sought-after development.

We are required by law to comply fully with The Money Laundering Regulations 2017 and as such need to complete AML ID verification and proof /source of funds checks on all buyers and, where relevant, cash donors once an offer is accepted on a property. We use GoTo Group to complete the necessary checks, this is not a credit check and therefore will have no effect on your credit history. With effect from 1st March 2025 a non-refundable compliance fee of £40.00 + VAT per buyer / donor will be required to be paid to the GoTo Group direct when an offer is agreed and prior to a sales memorandum being issued.

Floorplan



Photographs



Map



Notes

Situated on a high floor within the iconic Beetham Tower, this impressive apartment offers a rare opportunity to enjoy elevated city living in one of Birmingham's most recognisable landmarks. Boasting a long lease, the property provides both security and long-term appeal, making it an ideal choice for homeowners and investors alike.