



Because property is personal with...

Milton Avenue, Whiston L35

Belvoir

£210,000



Key Features

- Three Large Bedrooms
- Off Road Parking
- Large Rear Garden
- EPC rating in progress
- Freehold







A beautifully presented three-bedroom home with off road parking, stylish open-plan living, a modern fitted kitchen, contemporary family bathroom and a stunning, landscaped rear garden ideal for entertaining.

Ground Floor

From the entrance hallway you enter into a stylish, open-plan living and dining space that is beautifully presented, this welcoming environment is ideal for family gatherings. The generous lounge area features a contemporary wall-mounted electric fireplace with a sleek, modern surround. Neutral decor and soft grey carpeting enhance the sense of space. The dining area offers ample room for a family dining table, perfectly positioned by a large window with view of the lovely rear garden space.

From the dining area you access the bright and stylish kitchen. The room features a contemporary range of eye-catching blue units, providing ample storage while adding a bold and distinctive finish. These are complemented by sleek worktops and a clean white tiled splashback, creating a fresh, modern look throughout.

Additional features include wood effect laminate flooring, spotlight track lighting and a frosted rear door, providing easy access outside while maintaining privacy.

Upper Floor

To the upper floor you will find three spacious bedrooms, one of which is currently utilised as a spacious walk in wardrobe.

The family bathroom offers a clean, modern finish with an appealing neutral colour palette. Fully tiled in contemporary light-toned ceramics, the space feels bright and easy to maintain, complemented by a sleek white panelled ceiling with inset spotlights.

The suite comprises a low-level WC, a modern wash hand basin set within a handy vanity unit providing useful storage, and a full-sized bath with a glass shower screen. Additional features include wood-effect flooring for warmth and durability, as well as a built-in storage cupboard—perfect for keeping toiletries and linens neatly tucked away.

Rear Garden

The beautifully presented rear garden has been thoughtfully designed to create the perfect outdoor entertaining space. A generous, raised deck spans the width of the garden, offering ample room for outdoor dining and relaxation. The deck is complemented by a stylish pergola with seating area, providing a sheltered spot for lounging and social gatherings.

A standout feature is the bespoke garden bar, neatly positioned to serve the decking area—ideal for hosting parties or enjoying summer evenings with friends and family. Beyond the deck, a well-maintained grassed lawn offers additional space for recreation, bordered by fencing for privacy.

With a combination of functional zones, modern finishes, and a sociable layout, this stunning garden effortlessly blends comfort and style, making it a true extension of the home.





BELVOIR!



FRONT

Two storey mid-terrace with off road parking

ENTRANCE HALLWAY 11'9" x 6'8" (3.6m x 2m)

Window and door to front aspect. Carpeted flooring. Radiator to wall. Access point to upper floor and ground floor areas. Utility Meter Cupboard.

LIVING/DINING ROOM 23'0" x 13'0" (7m x 4m)

Windows to front and rear aspect. Carpeted flooring. Radiators to wall. Access point to kitchen.

KITCHEN 11'2" x 10'8" (3.4m x 3.3m)

Window and door to rear aspect. Fitted with a range of blue upper and lower cabinets and drawers. Speckled worktops. Part tiled backsplash. Standalone oven. One and a half single drain sink. Radiator to wall.

BEDROOM ONE 15'1" x 11'2" (4.6m x 3.4m)

Window to rear aspect. Carpeted flooring. Radiator to wall.

BEDROOM TWO 11'3" x 10'3" (3.4m x 3.1m)

Window to front aspect. Carpeted flooring. Radiator to wall.

BEDROOM THREE 9'6" x 8'3" (2.9m x 2.5m)

Window to front aspect. Carpeted flooring. Radiator to wall.

FAMILY BATHROOM 9'5" x 5'11" (2.9m x 1.8m)

Frosted window to rear aspect. P-Shaped bathtub with overhead shower and glass screen enclosure, wc and vanity style pedestal sink. Heated towel radiator.

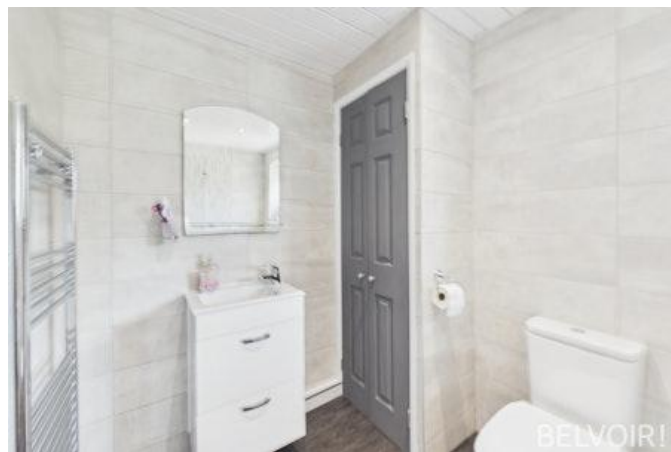
REAR GARDEN

Paved Patio area. Outhouse. Wooden bar, pergola and decked area. Fenced.

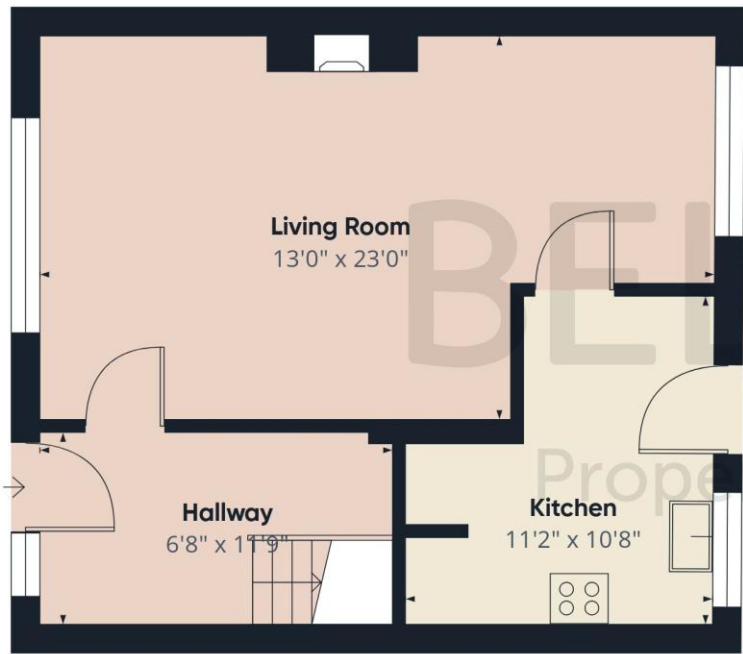
EPC IN PROGRESS











Approximate total area⁽¹⁾
479 ft²

(1) Excluding balconies and terraces

Calculations reference the RICS IPMS 3C standard. Measurements are approximate and not to scale. This floor plan is intended for illustration only.

GIRAFFE360



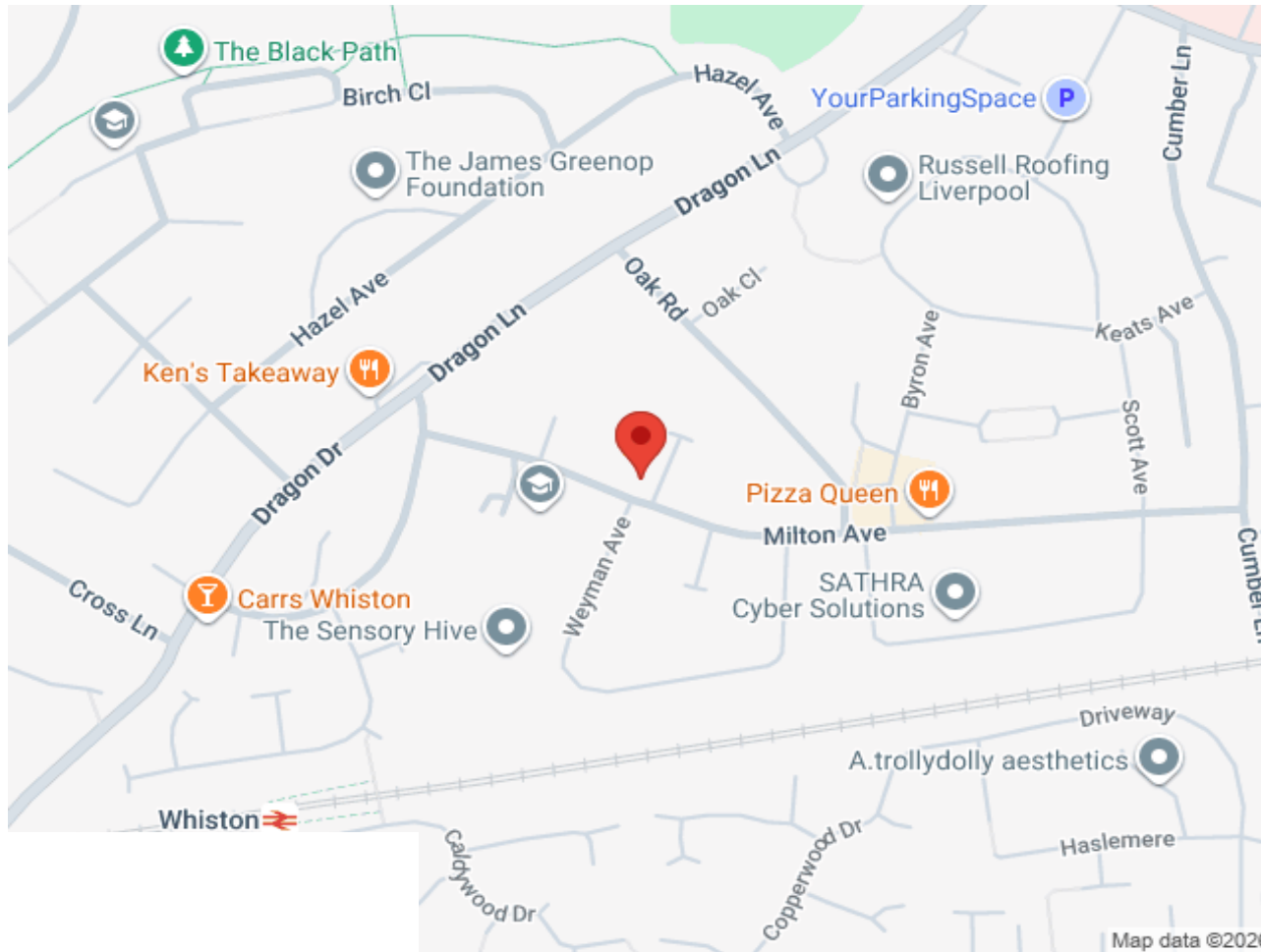


Floor 1

Approximate total area⁽¹⁾
479 ft²

(1) Excluding balconies and terraces

Calculations reference the RICS IPMS 3C standard. Measurements are approximate and not to scale. This floor plan is intended for illustration only.



Belvoir