



## Ash Grove, NW2

£425,000

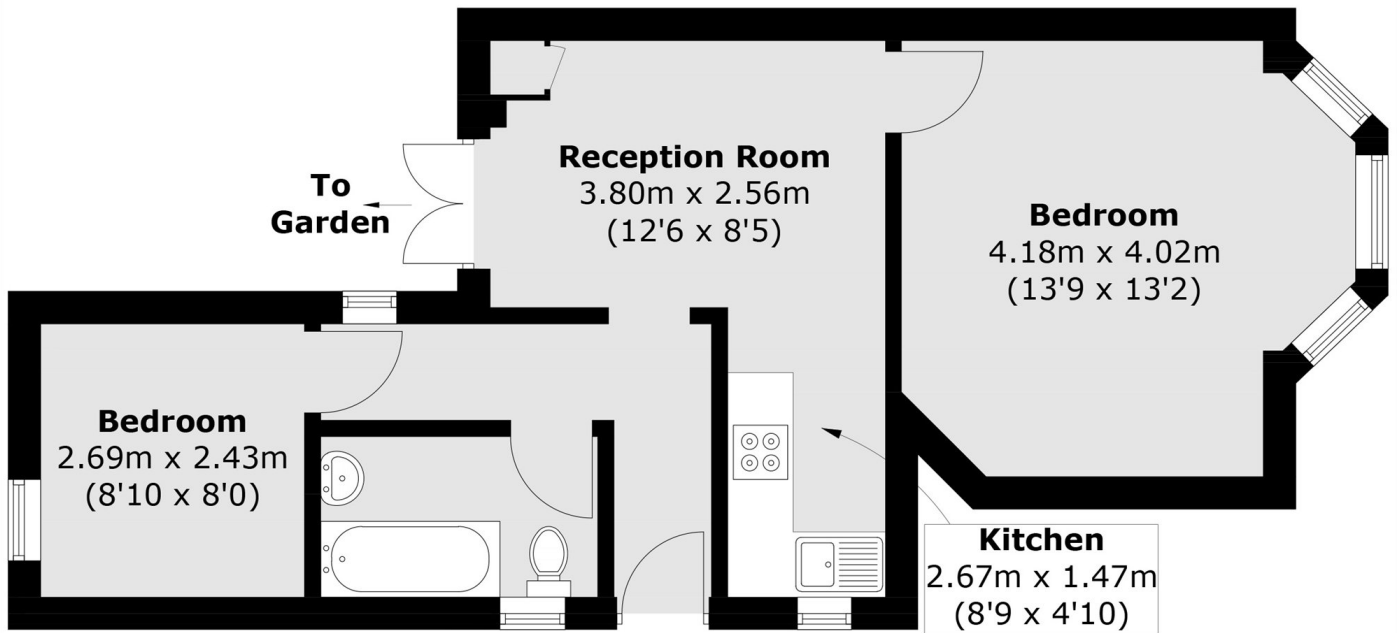
A recently refurbished two bedroom ground floor garden flat, offering bright living spaces throughout. Features include a spacious bay fronted reception room, modern fitted kitchen, stylish bathroom, and private rear garden. Ideally located close to local amenities, transport links, and green open spaces.

Ash Grove is conveniently located for quick access into Central London via Cricklewood station (Thameslink) and Kilburn underground station (Jubilee line). Local amenities in abundance with Cricklewood Broadway, Kilburn and West Hampstead within one mile.

### Features

- Ground Floor Garden Flat
- Private Entrance
- Two Bedrooms
- Private Garden
- Share Of Freehold
- Chain Free

Ash Grove,  
London, NW2



Total area (approx.): 44.7 sq. m (481.1 sq. ft)