



RESIDENT
PARKING
ONLY
NO TURNING

Flat 14, Windmill Court, Barnham Road, Barnham, PO22
ADV £99,950 Leasehold

 1 Bedroom  1 Bathroom  1 Reception Room



Key Features

- Ground Floor Apartment
- Direct Garden Access
- Spacious Lounge/Dining Room
- Integrated Kitchen
- Large Double Bedroom
- Modern Shower Room
- Residents Lounge & Guest Suite
- Residents & Visitor Parking
- No Chain

EPC Rating

Current = C

Potential = C

Council Tax Band

Band = B

Tenure - Leasehold

Length of Lease:

125 years 01/11/2005

Years Remaining:

104 years

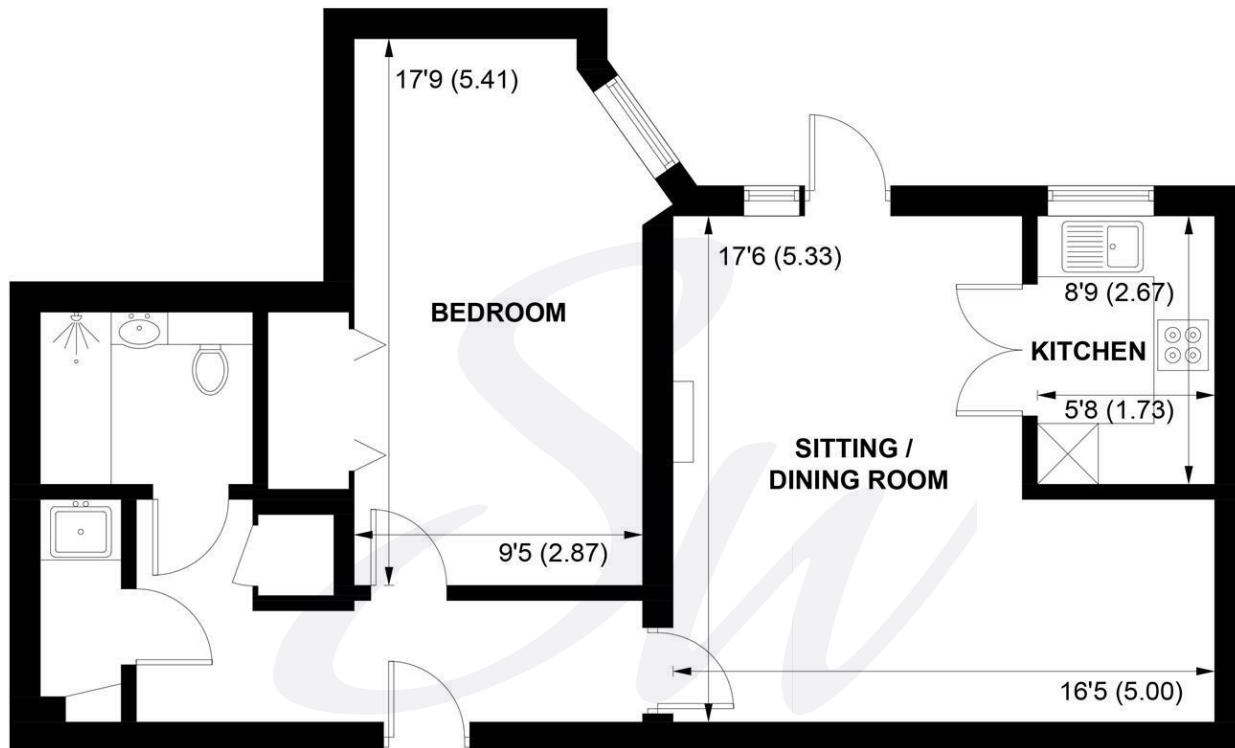
Ground Rent:

£395 per annum

Service Charge:

£2,144.61





GROUND FLOOR

APPROXIMATE GROSS INTERNAL AREA = 645 SQ FT / 59.9 SQ M

NOT TO SCALE (For illustrative purposes only as defined by RICS Code of Measuring Practice) 2026 ©

Produced for Sims Williams



simswilliams.co.uk

CHICHESTER

8-9 Southgate

Sales 01243 787868

Lettings 01243 836055

chichester@simswilliams.co.uk

WALBERTON

5 Maple Parade

Sales 01243 551368

Lettings 01243 836055

walberton@simswilliams.co.uk

ARUNDEL

8a High Street

Sales 01903 885678

Lettings 01903 881133

arundel@simswilliams.co.uk

BOGNOR REGIS

46 High Street

Sales 01243 862626

Lettings 01243 836055

bognor-regis@simswilliams.co.uk

Viewing Strictly by arrangement via the vendor's agent Sims Williams 01243 551368. These particulars are believed to be correct but their accuracy is not guaranteed and they do not form part of any contract.