



Property Features

- Beautifully Presented Two Bedroom, Two Bathroom Apartment at Eaves Court
- Exclusive Care-Led Development for the Over 65s in the Heart of Princes Risborough
- Modern and Spacious Accommodation Throughout
- Bright Living Area With Private Balcony Overlooking Communal Gardens and Chiltern Countryside
- Contemporary Kitchen and High-Quality Bathrooms
- Principal Bedroom With Ensuite Shower Room and Walk-in Wardrobe
- Access to Communal Gardens, Café and Comfortable Seating Areas
- Minimum Two Hours of Care Per Week Included in Rent (Eligibility Criteria Applies)
- EPC Rating B / Council Tax Band D
- Available Now

Full Description

A beautifully presented two-bedroom, two-bathroom apartment available to rent at Eaves Court, a thoughtfully designed, care-led development for the over 65s, ideally situated in the heart of Princes Risborough.

This modern and spacious apartment offers stylish accommodation throughout, featuring a bright living area with access to a private balcony enjoying views over the well-maintained communal gardens and the stunning Chiltern countryside. The contemporary kitchen and well-appointed bathrooms are finished to a high standard, creating a comfortable and low-maintenance home. The principal bedroom benefits from its own ensuite shower room and a walk-in wardrobe, providing both convenience and excellent storage.

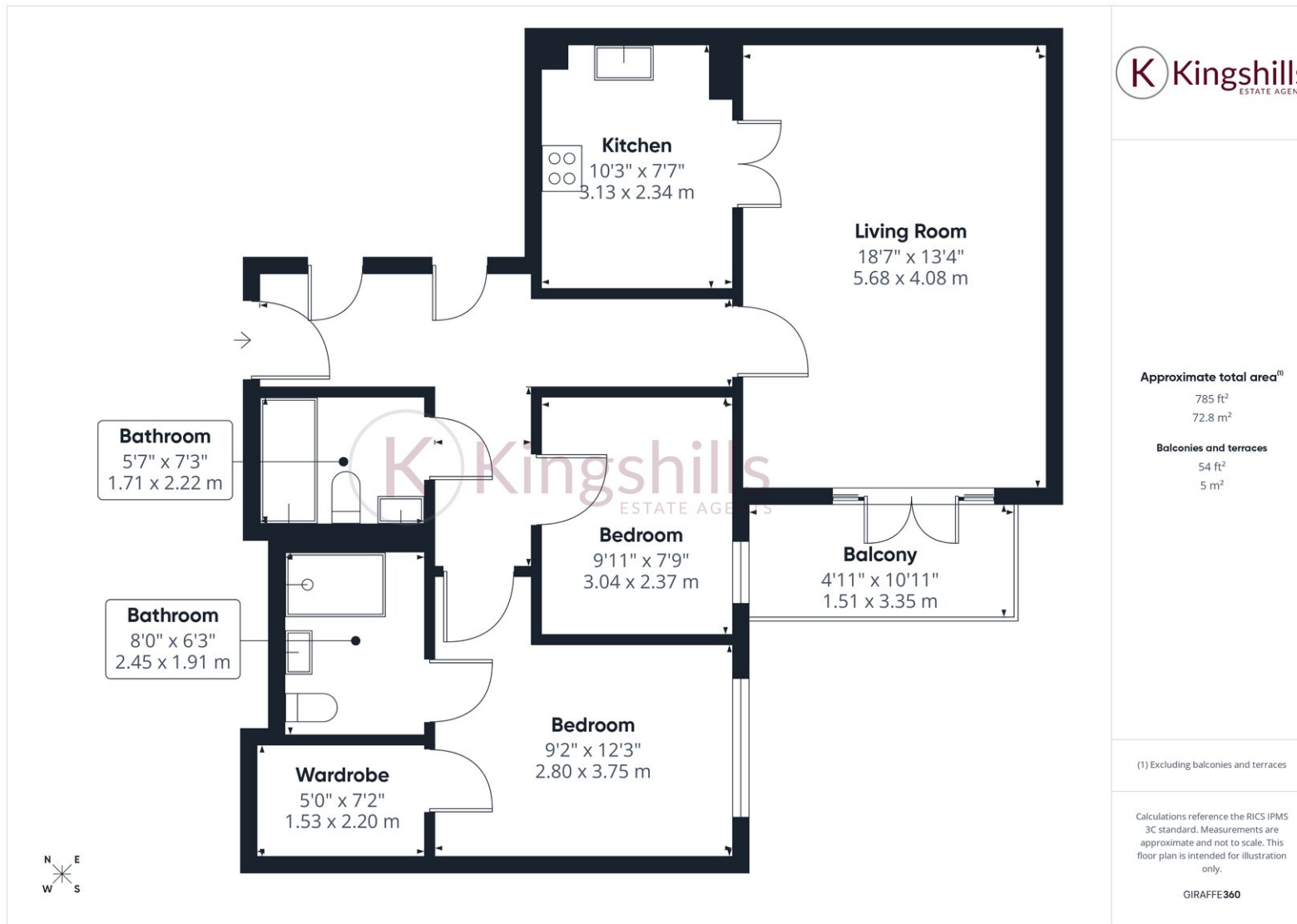
Eaves Court provides a welcoming community environment with excellent on-site facilities, including landscaped communal gardens, a café, and comfortable seating areas, perfect for socialising or relaxing.

Please note that this is a care-led development, and applicants must have a recognised care need to qualify. A minimum of two hours of care per week is required, which is included within the rental.

This is a fantastic opportunity to enjoy independent living with the added reassurance of tailored care support in a desirable central location.







Kingshills Estate Agents
C1C Comet Studios
Amersham
Buckinghamshire
HP7 0PX

01494 939868
hello@kingshills.co.uk
kingshills.co.uk

Agents Note: Whilst every care has been taken to prepare these particulars, they are for guidance purposes only. All measurements are for general guidance purposes only and whilst every care has been taken to ensure accuracy, they should not be relied upon and potential buyers/tenants are advised to recheck the measurements