



Hurfords

Westwood Park Road, Peterborough Freehold Guide Price £425,000

# Key Features

3 1 E D

- Established Semi-Detached Home
- Close to local well-regarded schools
- Perfect family home
- Much sought after location
- Scope for further expansion (STP)

A rare opportunity to acquire an expansive period semi-detached residence, occupying a substantial plot within one of Peterborough's most prestigious and sought-after postcodes. Positioned behind a generous frontage with entrance via a traditional five-bar gate, the property immediately impresses with its large gravel driveway providing ample off-road parking for several vehicles.

The accommodation extends to just over 1,138 square feet and briefly comprises a spacious and welcoming entrance hall, a refitted and extended kitchen breakfast room finished to a high standard, a separate formal dining room, and a superb family lounge with French doors opening onto and overlooking the impressive mature rear garden.



To the first floor are three generously proportioned bedrooms together with a well-appointed family bathroom, all presented in excellent order throughout.

Externally, the property enjoys a large established rear garden offering an excellent degree of privacy and significant potential for further extension or development, subject to the necessary planning permissions, making this an ideal long-term family home.

Westwood Park Road is ideally situated for access to a number of highly regarded local schools, including The Peterborough School on nearby Thorpe Road, the popular Jack Hunt School, and several respected junior schools. A wide range of local amenities are close at hand, whilst Peterborough city centre is only a short drive away, offering extensive shopping, leisure facilities, and direct rail connections to London in 45 minutes.

For buyers seeking a characterful home within a prime city location, this outstanding property offers both lifestyle and convenience in equal measure.

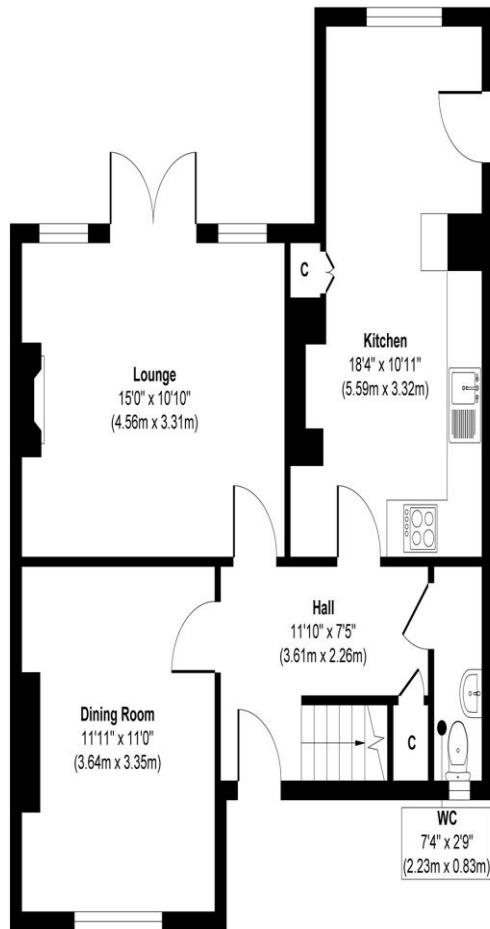
Early viewing is highly recommended to fully appreciate the space, setting, and potential this exceptional home has to offer.



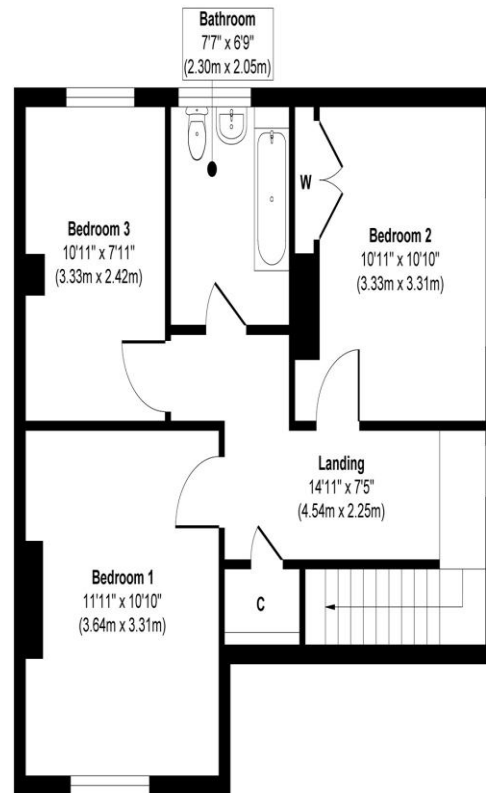
Westwood Park Road, Peterborough, PE3 6JL

Approximate Gross Internal Area

Total = 105.89 sq.m. ( 1,138 sq.ft.)



Ground Floor



First Floor

Illustration for identification purposes only, measurements are approximate, not to scale.

# Selling your property?

Contact us to arrange a FREE home valuation.

 01733 380956

 Unit 5, The Barns Milton Lane, Castor, PETERBOROUGH, Cambridgeshire , PE5 7DH

 [info@hurfords.co.uk](mailto:info@hurfords.co.uk)

 [www.hurfords.co.uk](http://www.hurfords.co.uk)



 SCAN ME



Hurfords is a trading name of Sharman Quinney Holdings Limited which is registered in England and Wales under company number 4174227, Registered Office is Cumbria House, 16-20 Hockliffe Street, Leighton Buzzard, Bedfordshire, LU7 1GN. VAT Registration Number is 500 2481 05.

1: These particulars do not constitute part or all of an offer or contract. 2: The measurements indicated are supplied for guidance only and as such must be considered incorrect. 3: Potential buyers are advised to recheck the measurements before committing to any expense. 4: Hurfords has not tested any apparatus, equipment, fixtures, fittings or services and it is the buyers interests to check the working condition of any appliances. 5: Hurfords has not sought to verify the legal title of the property and buyers must obtain verification from their legal representative. 6: Intending purchasers will be asked to produce identification documentation at a later stage and we would ask your co-operation in order that there will be no delay in agreeing the sale. Ref: HUC103895 - 0002

