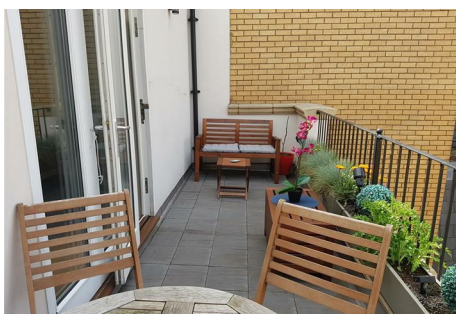
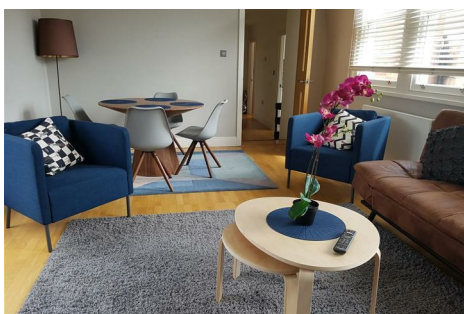


PARKER JAMES

ESTATES

Established since 1995



## Chancery Station House

32 High Holborn London WC1V 6AX

- Available 10th August
- Fifth floor penthouse
- Private roof terrace
- Three Bedrooms
- Holborn station minutes away
- Furnished
- Lift
- Well maintained building
- Two bathrooms
- Student friendly

£4,500 Per Month

# Chancery Station House

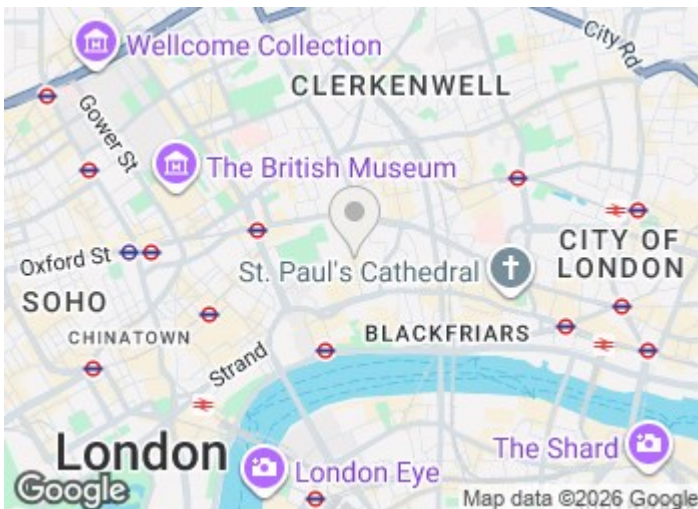
32 High Holborn London WC1V 6AX



Available from 10th August on a furnished basis is this well presented fifth floor penthouse apartment with lift and private roof terrace on High Holborn.

The 90 sqm property, which comes with good quality furnishings, and wood flooring exists throughout, is one of just nine within this select and secure building and briefly comprises, an entrance hall, substantial dual aspect reception room which enjoys plenty of natural light and has doors opening onto to a private rear facing roof terrace, fully fitted kitchen with integrated appliances including a dishwasher, three bedrooms all with fitted wardrobes (two of these are double bedrooms, one is a single) with the master bedroom benefitting from a fully tiled walk-in shower room and further bathroom accessed from the hallway.

Chancery Station House is a very well maintained centrally located building on High Holborn and within a few minutes walk of Chancery Lane (Central) and Holborn (Central and Piccadilly) stations, a Sainsbury's supermarket and an excellent choice of bars and restaurants whilst pleasant open space can enjoyed in nearby Lincoln's Inn Fields, London's largest public square.

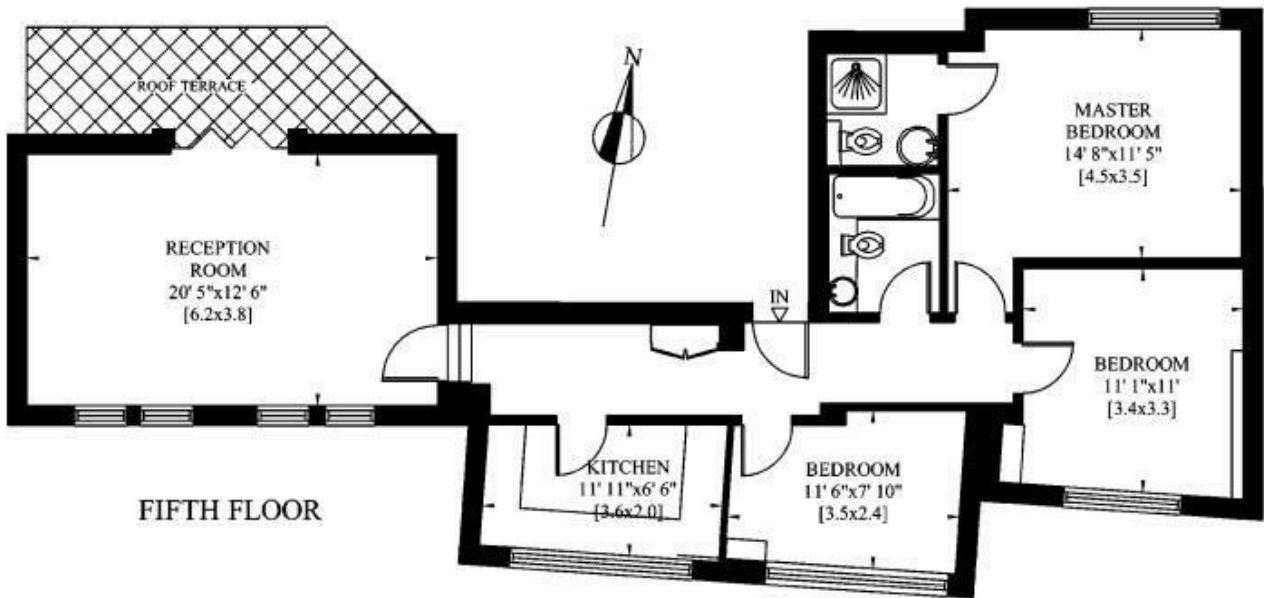


[Directions](#)





# Floor Plan



These particulars, whilst believed to be accurate are set out as a general outline only for guidance and do not constitute any part of an offer or contract. Intending purchasers should not rely on them as statements of representation of fact, but must satisfy themselves by inspection or otherwise as to their accuracy. No person in this firm's employment has the authority to make or give any representation or warranty in respect of the property.

