



📍 Flat 3 20 Northgate Street, Devizes, Wiltshire, SN10 1JT

🏠 Guide Price £135,000

A delightful two-bedroom top-floor flat set within a wonderful Grade II listed building, conveniently located just a stone's throw from the town centre.

- No Onward Chain
- Set In The Heart Of Devizes Town Centre
- Top Floor Flat
- Two Bedrooms
- Fitted Kitchen
- Characterful Sitting Room
- Modern Bathroom
- Grade II Listed With Period Features
- Ideal Buy To Let Or First Time Buyer's Home

🏠 Leasehold - Share of Freehold

🏠 EPC Rating D



Offered with no onward chain, this spacious and well appointed 2 bedroom Grade II Listed flat is conveniently placed in the heart of the historic centre of Devizes. An ideal property for anyone looking to downsize into town with amenities right on the doorstep.

Internally, a communal front door opens into a stairwell with stairs rising up to the top floor and Flat Number 3. Inside the flat, the landing leads off to a lovely light sitting room with a large sash window wooden beams and a feature fireplace (not in use)/ From here is an opening into a modern fitted kitchen with an integrated oven and hob, and space for further appliances. There are two bedrooms, both with fitted storage, and a family bathroom with oak flooring and a traditional white suite and an electric shower over a bath.

The property benefits from gas fired central heating and all mains services. Being centrally located in town, everything you need is just a stone's throw away. There is on road parking nearby, plus the ability to obtain a permit for one of the closeby car parks. The previous owner made a private arrangement with a local business to be able to park overnight or on weekends in their car park).

The property would be a lovely home for a first time buyer as well as a good investment buyer, with a potential rental of £900 pcm.

Situation

This charming period home is located right in the heart of Devizes town centre- just a mere a stone's throw away from shops, restaurants and amenities. Historic Devizes is bisected by the Kennet & Avon canal, part of a waterway joining London to Bristol and famed for its flight of twenty-nine locks, an engineering and aesthetic marvel walking distance from the town, and a paradise for canoeists, barges and anglers. Featuring a wealth of listed buildings and a weekly market, the bustling town enjoys a beautiful setting amidst Wiltshire's chalk downlands criss-crossed by ancient byways and prehistoric earthworks providing a scenic playground for walkers and cyclists. Cultural facilities include a museum, active theatre, cinema and vibrant live-music scene. The major centres of Bath, Salisbury, Swindon, Marlborough and Chippenham are all within a 30-mile radius.

Property Information

Services: All mains services are connected at the property. On street parking nearby. The current owners had previously agreed parking at the rear for evenings and weekends only with the neighbouring business (but this would need to be enquired into by prospective purchasers and they would need to formalise their own arrangements).

Council Tax: A

Grade 2 Listed building

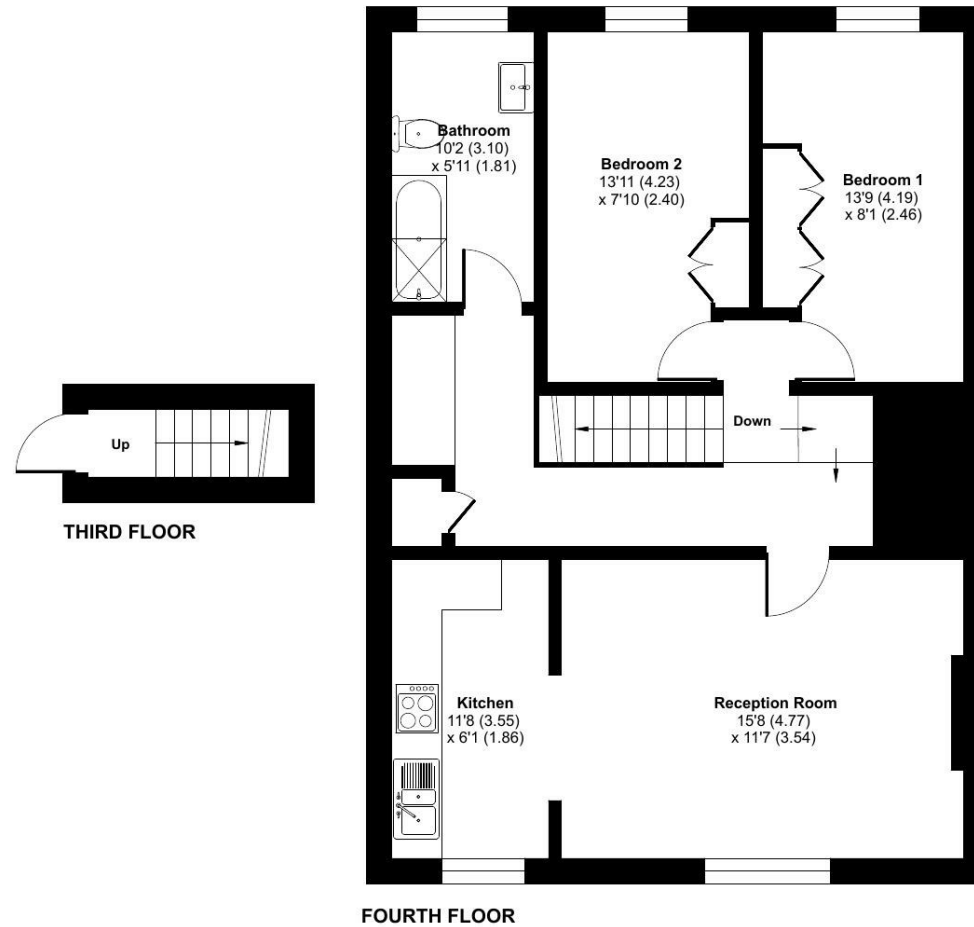
Leasehold with share of freehold. Freehold owned by my management company comprising of all three flats in the property which owner of flat 3 becomes a shareholder. 965 lease remaining.



Northgate Street, Devizes, SN10

Approximate Area = 734 sq ft / 68.1 sq m

For identification only - Not to scale



 Floor plan produced in accordance with RICS Property Measurement 2nd Edition, Incorporating International Property Measurement Standards (IPMS2 Residential). © ntechcom 2026. Produced for Strakers. REF: 1464991

Disclaimer These particulars, whilst believed to be accurate are set out as a general outline only for guidance and do not constitute any part of an offer or contract. Intending purchasers should not rely on them as statements of representation of fact, but must satisfy themselves by inspection or otherwise as to their accuracy. No person in this firm's employment has the authority to make or give any representation or warranty in respect of the property. All measurements and distances are approximate only. Your home is at risk if you do not keep up repayments on a mortgage or other loan secured on it.