



Connells

Peregrine
Aylesbury



Property Description

Located in the sought-after Waterside development of Watermead, this beautifully presented three-bedroom mid-terraced house offers modern living with a host of desirable features—perfect for families.

Step inside to a welcoming entrance hall that leads into a bright and airy front-aspect lounge, ideal for relaxing and unwinding. The lounge flows seamlessly into a dining area with a charming rear bay window, filling the space with natural light. At the heart of the home is the extended kitchen/diner, finished to a high modern standard with solid wood worktops, a freestanding gas oven, ample wall and base units, and a convenient breakfast bar. A downstairs WC completes the ground floor layout.

Upstairs, the property boasts three well-proportioned bedrooms. The master bedroom benefits from two built-in storage cupboards and a private en-suite shower room. The remaining bedrooms are served by a sleek family bathroom featuring a bath with mixer tap.

Outside, the fully enclosed rear garden offers a mix of patio, lawn, and decking—ideal for entertaining or relaxing in privacy. A timber shed provides additional storage. The

property also includes a garage and driveway for off-road parking.

Additional Highlights:

Refitted electrics throughout and attic space for storage.

Perfect setting for family life and a quiet getaway to the country. Local amenities in Watermead Village include The Watermead Inn, Post Office, Dentist, Chinese takeaway and hair salon.

Entrance Hall

Door to front
Pine flooring

Lounge

14' 4" max x 12' 8" max (4.37m max x 3.86m max)
Window to front
Pine flooring underfoot
Radiator

Dining Room

8' max x 7' 5" max (2.44m max x 2.26m max)
Bay window to rear
Pine flooring
Radiator

Kitchen

11' 6" max x 7' 1" max (3.51m max x 2.16m max)

Window to rear

Door to rear

Tiling underfoot

Freestanding gas oven

Boiler

Sink/drain

Wall and base units

Solid wood worktops

Breakfast bar

Landing

Carpet underfoot

Loft access

Airing cupboard

Bedroom One

10' 8" max x 9' 7" max (3.25m max x 2.92m max)

Window to front

Two built in wardrobes

Radiator

Carpet underfoot

En-Suite

Window to front

WC

Wash hand basin

Shower cubicle

Tiling underfoot

Part tiling

Towel radiator

Bedroom Two

9' 7" max x 7' 9" max (2.92m max x 2.36m max)

Window to rear

Carpet underfoot

Radiator

Bedroom Three

11' 7" max x 6' 4" max (3.53m max x 1.93m max)

Window to rear

Carpet underfoot

Radiator

Bathroom

Window to rear

Tiling underfoot

Part tiling

Bath/mixer

Rear Garden

Patio

Laid lawn

Decking

Timber shed

Parking

Driveway parking

Garage

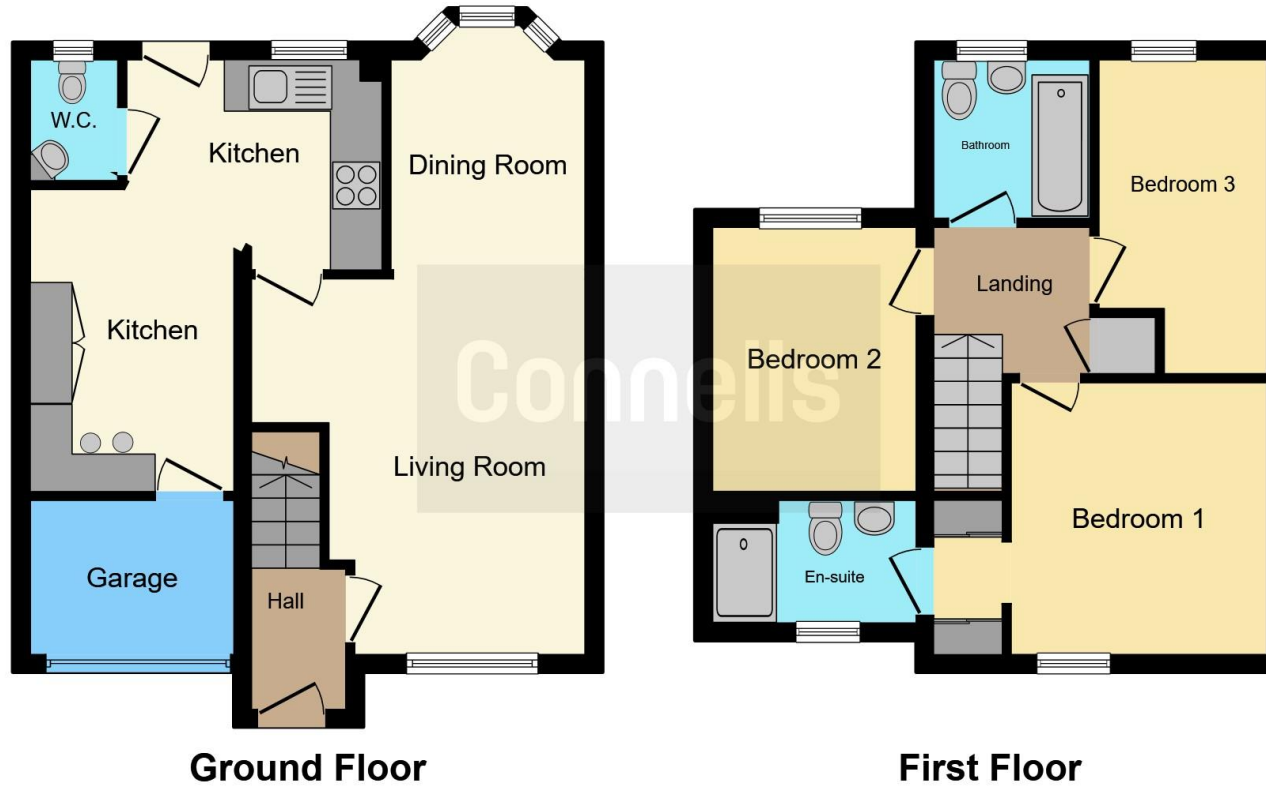
6' 3" max x 8' 1" max (1.91m max x 2.46m max)

Up and over door









This floor plan is for illustrative purposes only. It is not drawn to scale. Any measurements, floor areas (including any total floor area), openings and orientation are approximate. No details are guaranteed, they cannot be relied upon for any purpose and they do not form part of any agreement. No liability is taken for any error, omission or misstatement. A party must rely upon its own inspection(s). Powered by www.focalagent.com

To view this property please contact Connells on

T 01296 395 111

E aylesbury@connells.co.uk

2 Temple Street
AYLESBURY HP20 2RH

EPC Rating: D Council Tax
Band: D

Tenure: Freehold

view this property online connells.co.uk/Property/ALS312643



1. MONEY LAUNDERING REGULATIONS Intending purchasers will be asked to produce identification documentation at a later stage and we would ask for your co-operation in order that there will be no delay in agreeing the sale. 2. These particulars do not constitute part or all of an offer or contract. 3. The measurements indicated are supplied for guidance only and as such must be considered incorrect. Potential buyers are advised to recheck measurements before committing to any expense. 4. We have not tested any apparatus, equipment, fixtures, fittings or services and it is in the buyers interest to check the working condition of any appliances.

Connells Residential is registered in England and Wales under company number 1489613, Registered Office is Cumbria House, 16-20 Hockliffe Street, Leighton Buzzard, Bedfordshire, LU7 1GN. VAT Registration Number is 500 2481 05.

See all our properties at www.connells.co.uk | www.rightmove.co.uk | www.zoopla.co.uk

Property Ref: ALS312643 - 0006