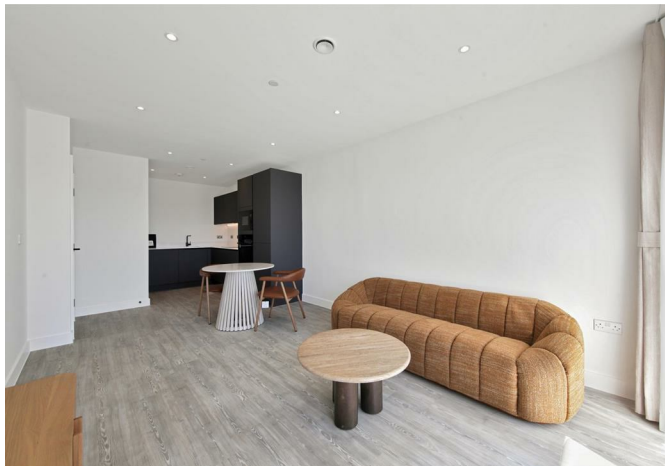




15 Colmar House 7 Capital Interchange Way, Brentford, TW8 0SN  
£485 Per Week



## 15 Colmar House 7 Capital Interchange Way, Brentford, TW8 0SN

**£485 Per Week**

Welcome to this charming apartment located at 7 Capital Interchange Way in the vibrant area of Brentford. This delightful property offers a perfect blend of comfort and convenience, making it an ideal choice for individuals or couples seeking a modern living space.

Spanning an impressive 540 square feet, the apartment features a well-designed layout that maximises space and light. The reception room provides a welcoming area for relaxation and entertainment, while the bedroom offers a peaceful retreat for restful nights. The bathroom is thoughtfully appointed, ensuring both functionality and style.

Brentford is known for its excellent transport links, making it easy to commute to central London and beyond. Residents can enjoy a variety of local amenities, including shops, cafes, and parks, all within a short distance. The area boasts a vibrant community atmosphere, perfect for those who appreciate a lively neighbourhood.

## Description

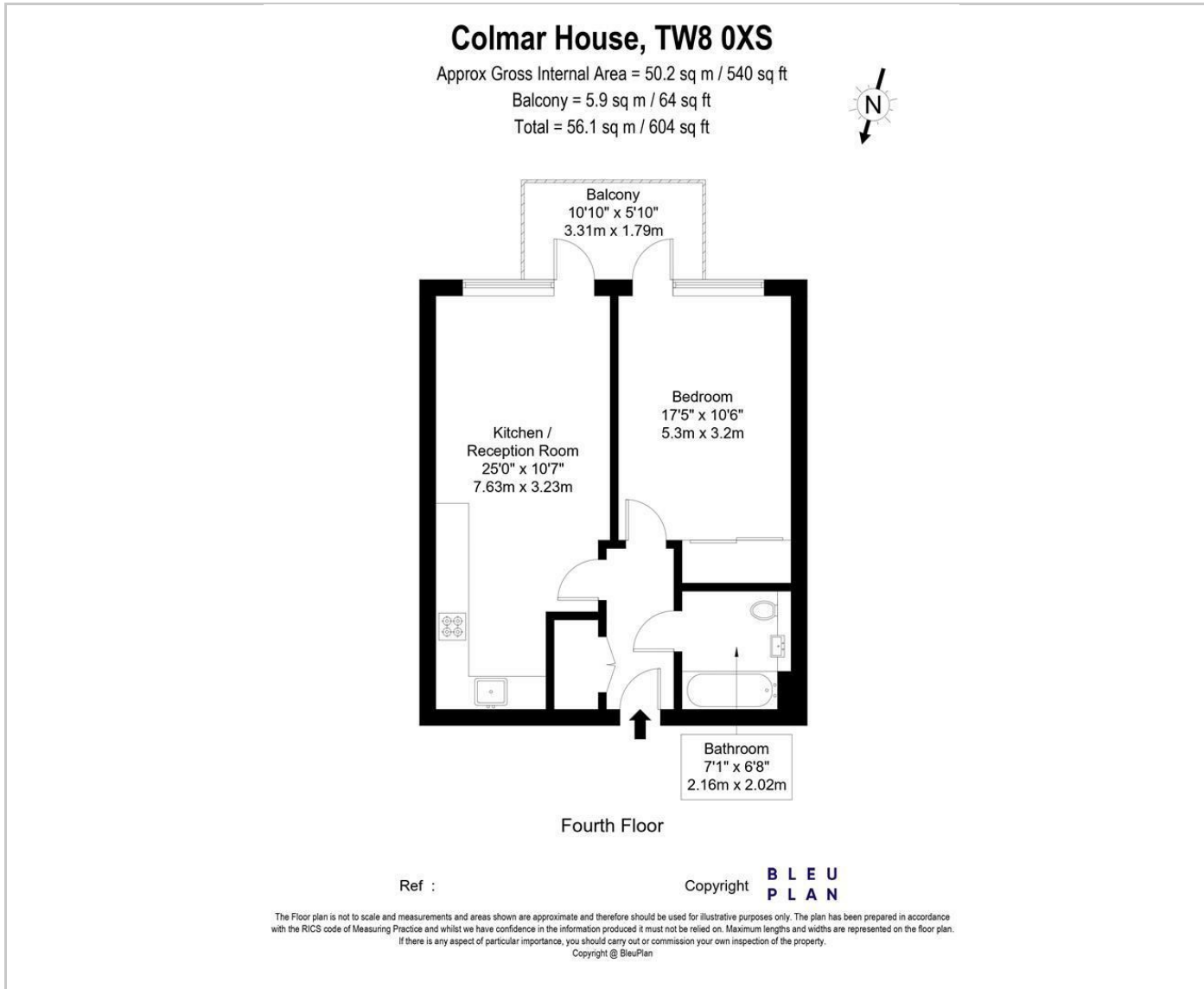


## Situation

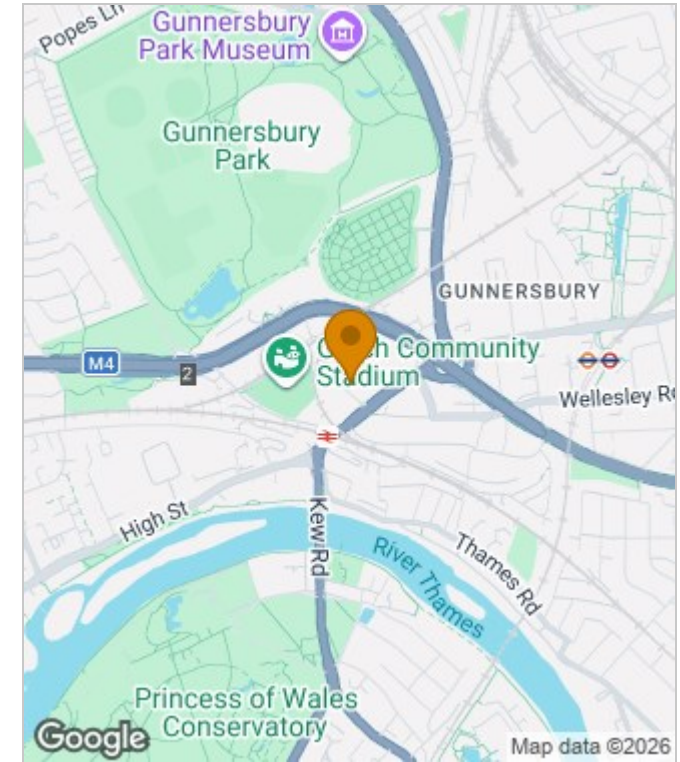


Furnished  
Council Tax Band: New Build  
Available: 11th May 2026

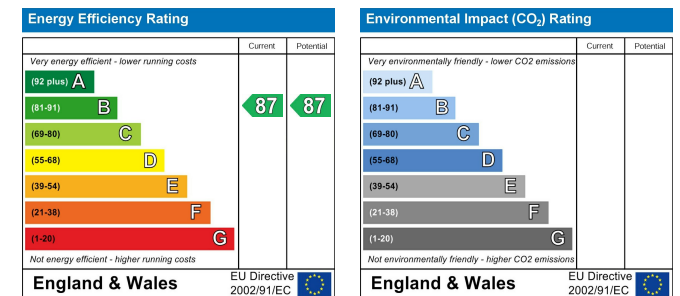
## Floor Plans



## Area Map



## Energy Performance Graph



These particulars, whilst believed to be accurate are set out as a general outline only for guidance and do not constitute any part of an offer or contract. Intending purchasers should not rely on them as statements of representation of fact, but must satisfy themselves by inspection or otherwise as to their accuracy. No person in this firm's employment has the authority to make or give any representation or warranty in respect of the property.