

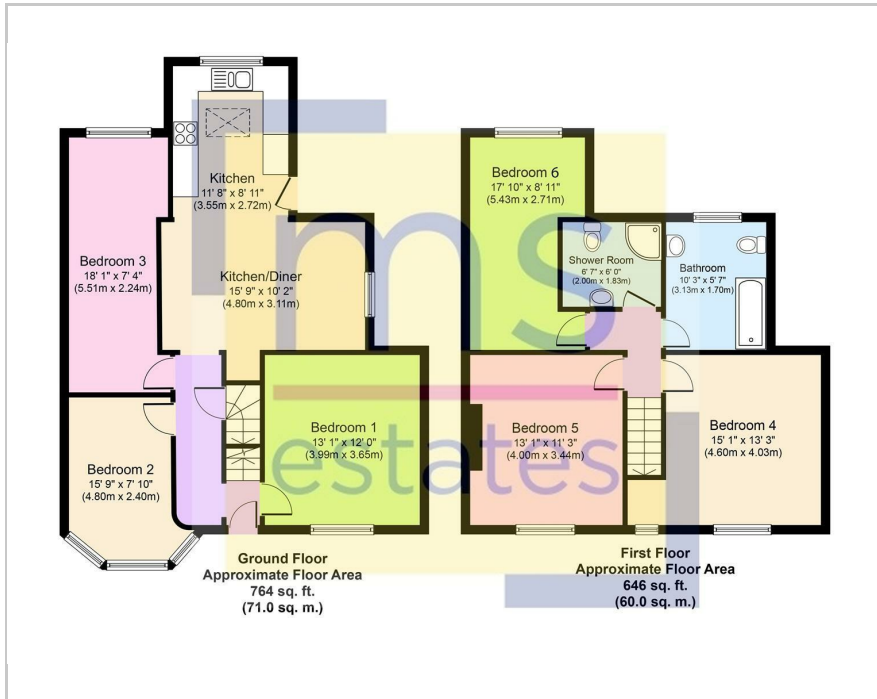


57 Cottessmore Road, Nottingham, NG7 1QE

£700 Per Week



Floor Plan



Area Map



- STUDENT ACCOMMODATION
- Utility bills included
- 5 Double bedrooms & spare room
- 2 Bathrooms
- Open-plan kitchen/living/dining room with TV
- Dishwasher
- Outdoor space with seating
- Excellent location
- Located within the Lenton Triangle
- Close to local amenities

Energy Efficiency Rating

| | Current | Potential |
|---|-------------------------|-----------|
| Very energy efficient - lower running costs | | |
| (92 plus) A | | |
| (81-91) B | | |
| (69-80) C | | |
| (55-68) D | 66 | |
| (39-54) E | | |
| (21-38) F | | |
| (1-20) G | | |
| Not energy efficient - higher running costs | | |
| England & Wales | EU Directive 2002/91/EC | 85 |



These particulars, whilst believed to be accurate are set out as a general outline only for guidance and do not constitute any part of an offer or contract. Intending purchasers should not rely on them as statements of representation of fact, but must satisfy themselves by inspection or otherwise as to their accuracy. No person in this firm's employment has the authority to make or give any representation or warranty in respect of the property.

3 Park Street, Derby Road, Lenton, Nottingham, NG7 1RR

Tel: 0115 9120061 Email: mail@ms-estates.co.uk www.ms-estates.co.uk