



MISTORIA
ESTATE AGENTS



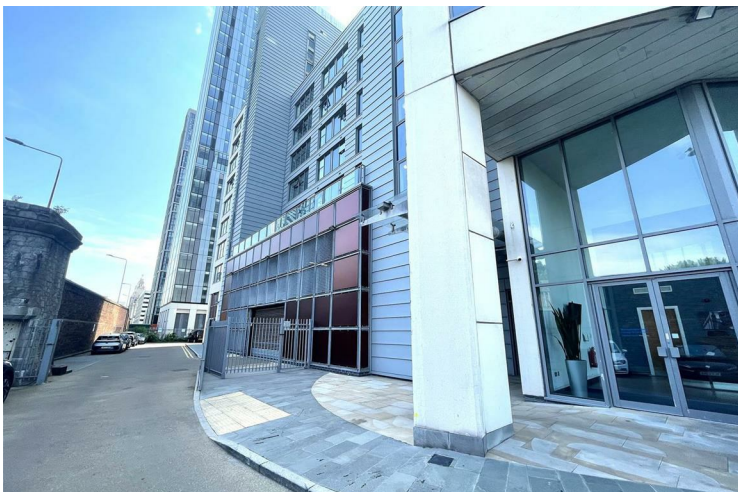
Princes Dock William Jessop Way Liverpool

£180,000
Leasehold

Nestled in the vibrant heart of Liverpool, this stunning two-bedroom flat on William Jessop Way offers a unique blend of modern living and picturesque views. Situated on the 13th floor, this apartment boasts breathtaking vistas of the River Mersey, providing a serene backdrop to your daily life.

Upon entering, you are welcomed into a spacious reception room that is perfect for both relaxation and entertaining. The large windows allow natural light to flood the space, enhancing the airy atmosphere. The flat features two well-appointed bedrooms, each designed with comfort in mind, ensuring a restful retreat at the end of the day.

With two bathrooms, convenience is at your fingertips, making it ideal for families or those who enjoy hosting guests. The contemporary design and high-quality finishes throughout the property create a stylish and inviting environment.



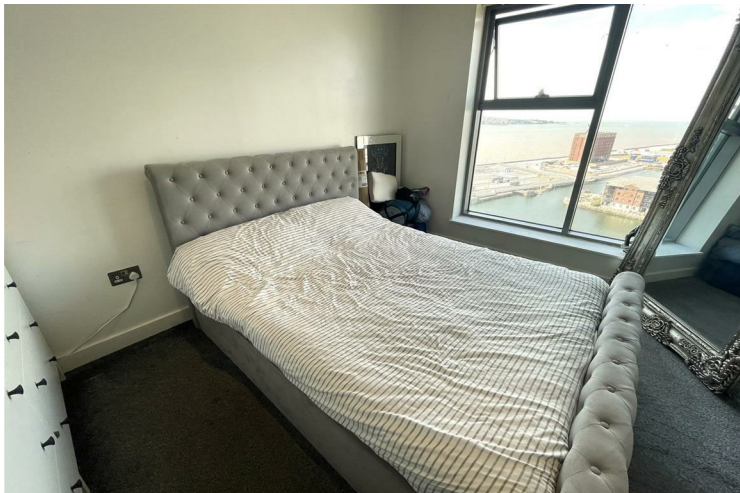
- WELL LOCATED TWO BED, TWO BATHROOM CITY CENTRE APARTMENT.
- LIFT, CONCIERGE & SECURE ALLOCATED PARKING.
- CURRENTLY USED AS INVESTMENT PROPERTY. NO CHAIN !!!
- MASTER ENSUITE, MAIN BATHROOM.
- UTILITY.
- OPEN PLAN LOUNGE, KITCHEN WITH INTREGATED APPLIANCES.

disclaimer

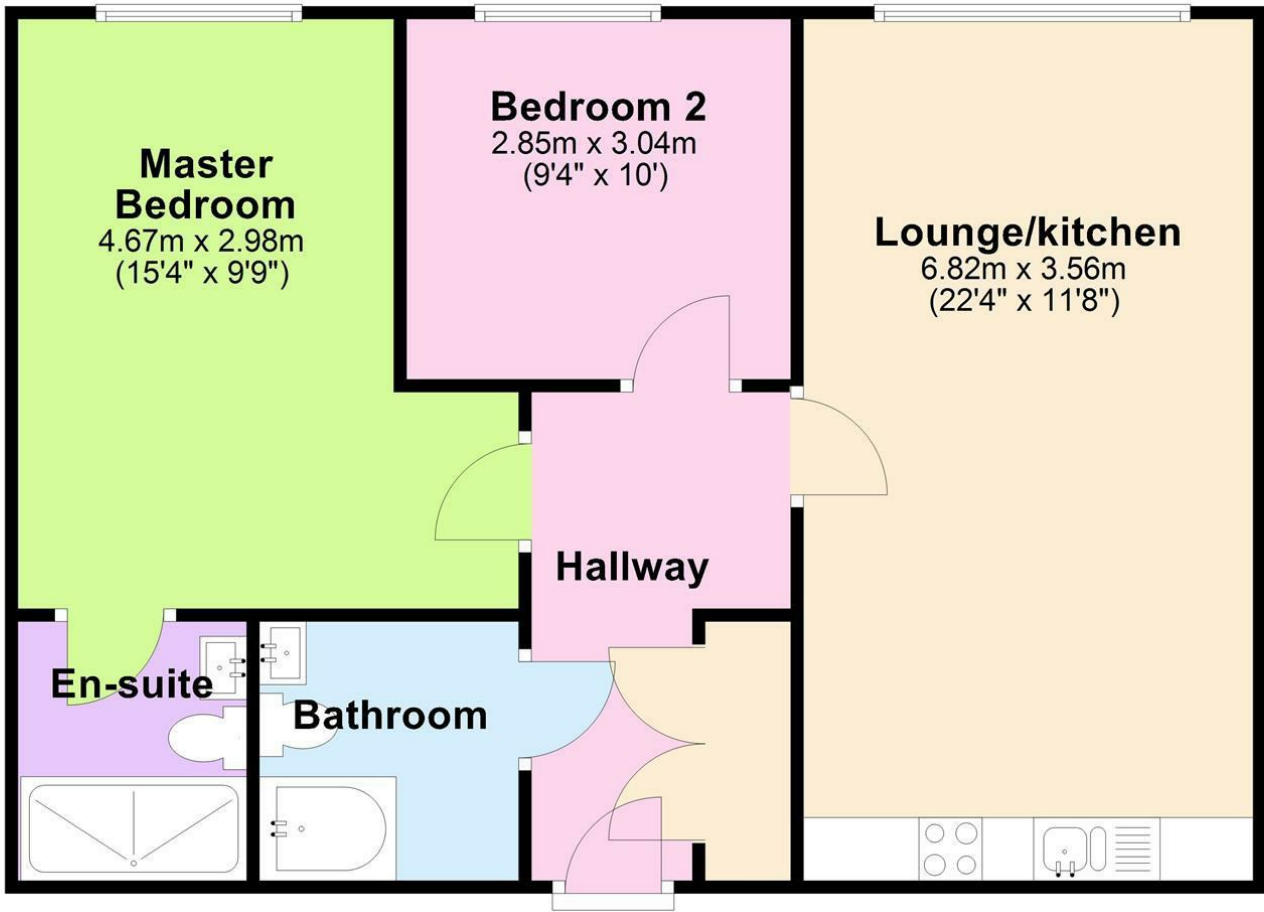
Disclaimer: The information and images provided in this property advertisement are intended for guidance purposes only. While we make every effort to ensure the accuracy of the details, we strongly recommend that interested parties view the property in person to confirm the property's condition and suitability for their specific requirements. The photographs used in this advertisement may have been digitally enhanced and may not accurately represent the current condition of the property. Any measurements or distances provided are approximate and should not be relied upon for any purpose. Furthermore, the description and details provided are based on the landlord's understanding and may be subject to change without notice. Prospective tenants are advised to verify any specific details that are important to them before entering into any agreement. We do not accept any liability for any loss or damage, whether direct or indirect, arising from reliance upon the information provided in this advertisement. We strongly advise all parties to seek professional advice and conduct their own due diligence before making any decisions or commitments related to this property. By viewing this advertisement, you agree to the above disclaimer and acknowledge that any reliance on the information provided is at your own risk. Please note that this disclaimer is subject to change and may be updated without prior notice



• STUNNING VIEWS OVER SEA & DOCKLANDS • NEAR AMENITIES, TRANSPORT LINKS & CITY CENTRE. • LEASEHOLD.
125YRS • CALL MISTORIA ESTATE AGENTS TODAY FOR MORE INFORMATION.



13th Floor



Energy Efficiency Rating		Current	Potential
Very energy efficient - lower running costs			
(92 plus) A			
(81-91) B		81	86
(69-80) C			
(55-68) D			
(39-54) E			
(21-38) F			
(1-20) G			
Not energy efficient - higher running costs			
England & Wales		EU Directive 2002/91/EC	

Agents Note: Whilst every care has been taken to prepare these particulars, they are for guidance purposes only. All measurements are approximate and are for general guidance purposes only and whilst every care has been taken to ensure their accuracy, they should not be relied upon and potential buyers/tenants are advised to recheck the measurements

Pall Mall Liverpool Mistoria
22 Pall Mall
Liverpool
L3 6AL

0151 282 1539
info@mistoria.co.uk
mistoria.co.uk

