



## Union Lane, TW7

£250,000

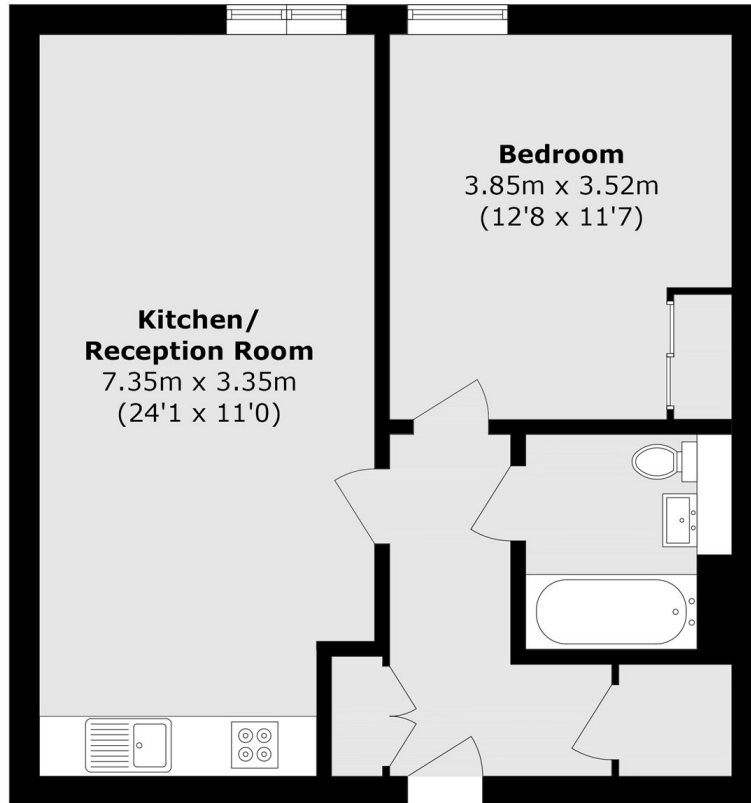
A spacious and well-presented one bedroom apartment located on the third floor of the development. The property is in great condition, has a long lease and is offered to the market with no onward chain. This lift-serviced apartment has convenient allocated parking.

Union Lane is an attractive development which is just a few hundred yards from the green expanses of Syon Park and the River Thames. Close to Syon Lane Station, several bus routes and the A4, it is ideal for commuting.

### Features

- Modern Development
- Open-Plan Reception
- One Double Bedroom
- Modern Bathroom
- Fully Fitted Kitchen
- Allocated Parking

# Union Lane, Isleworth, TW7



Total Area (approx.): 51.3 sq. m (552.1 sq. ft)