



Royal Quarter, KT2

£2,200 Per calendar month

Dexters



Royal Quarter, KT2

This property includes two double bedrooms, master bedroom with en-suite bathroom, guest bathroom, lounge/dining room with balcony, concierge service and gym access and underground parking.

A modern apartment within this popular development close to the town centre and train station moments from the river which has many different bars, restaurants and cafés.

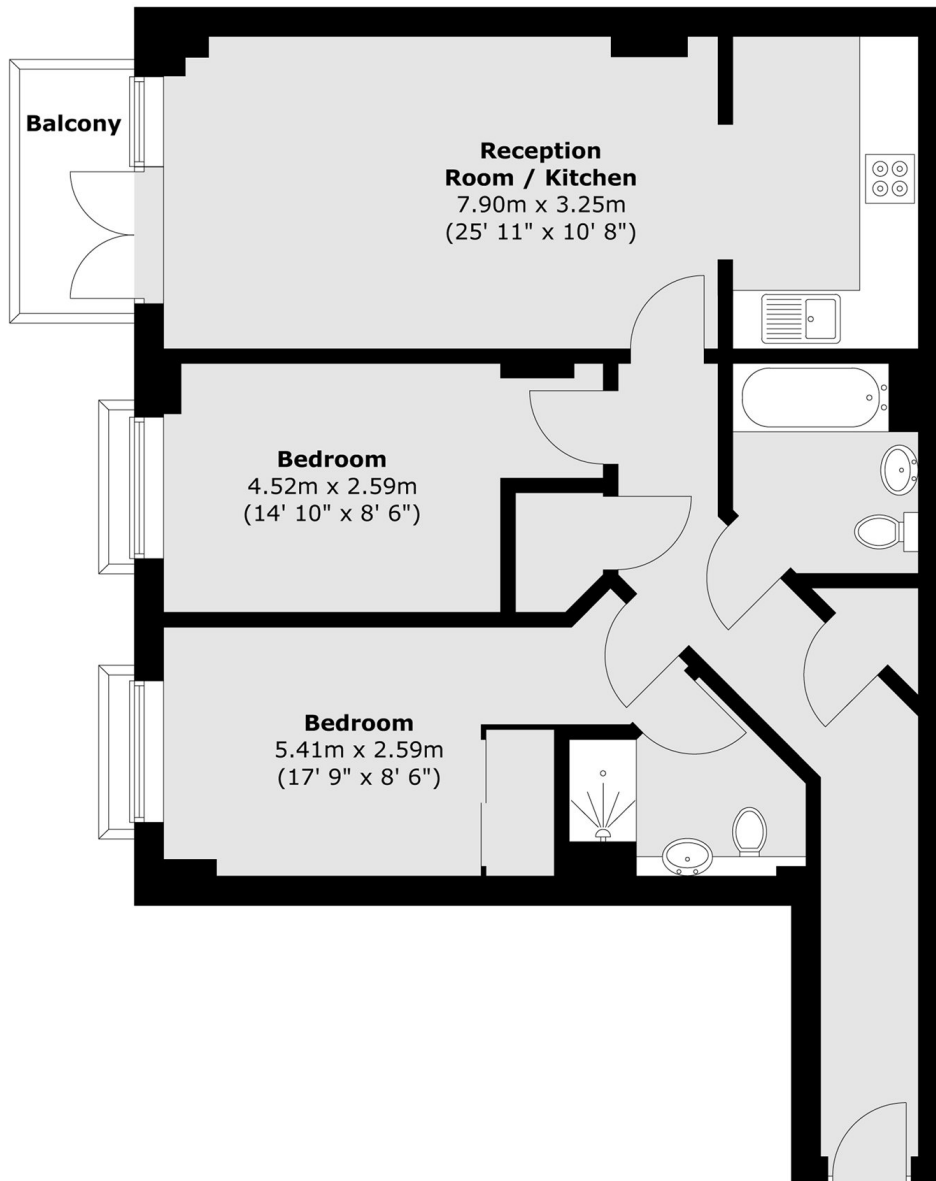
Features

- Two Bedrooms
- Sought After Development
- Communal Gardens
- Concierge Service
- Residents Gym
- Parking





Royal Quarter, Kingston Upon Thames, KT2



Total area (approx.) : 72 sq. m (775 sq. ft)
Total balcony area (approx.) : 3.7 sq. m (40 sq. ft)