



THE NEW HOUSE, FOX GLOVE FARM

Hatfield Heath, Bishop's Stortford, CM22 7BL


£1,350,000

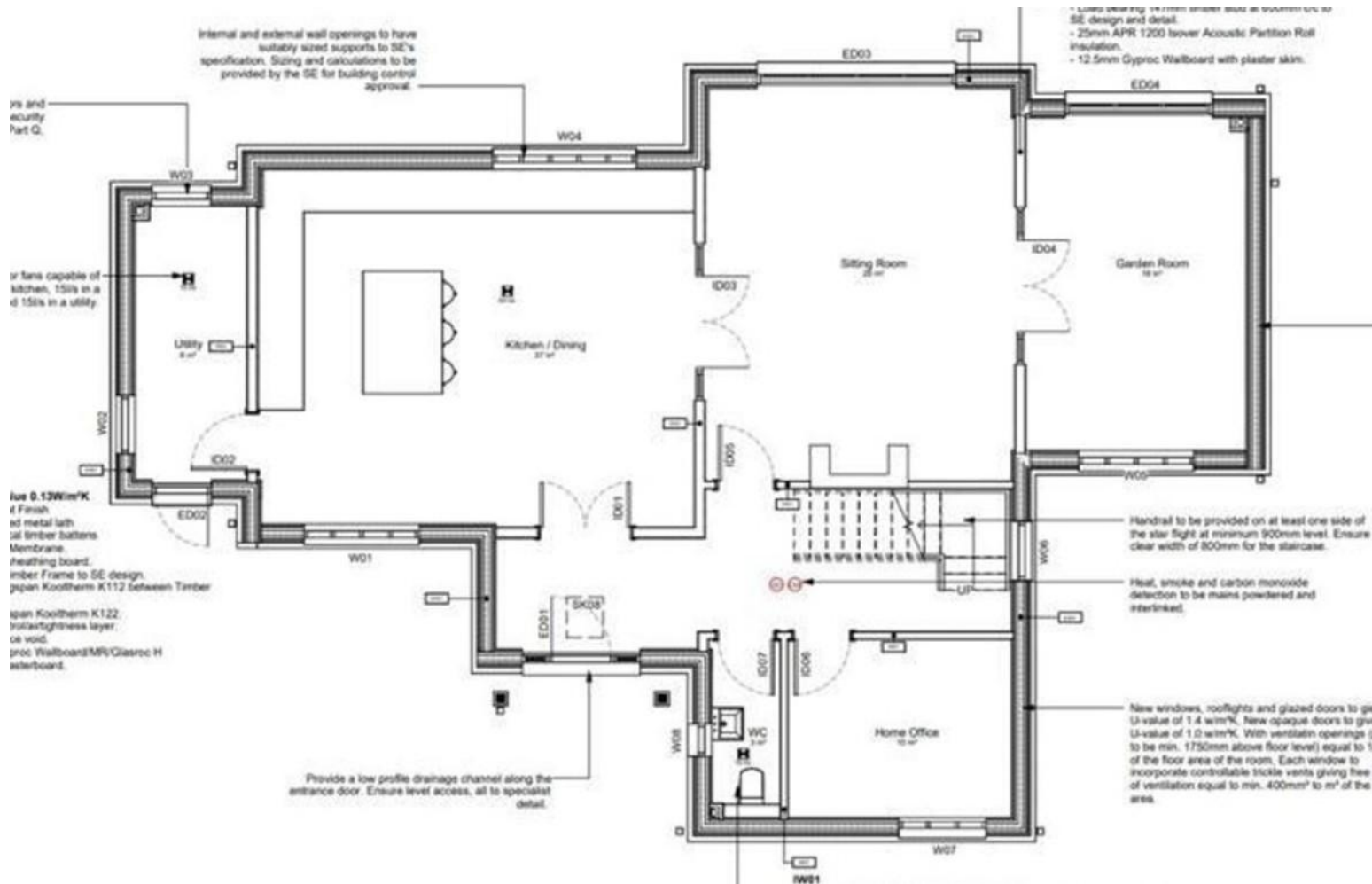


COMMERCIAL | RESIDENTIAL | LETTINGS

www.jamesandco.net

- Nearing Completion - Don't Miss This!
- Circa 2750 SQ FT of Balanced Living Space
- Idyllic Location
- Gated Private Shared Driveway
- Three Bedrooms and Three En Suites
- Three Reception Rooms
- High Quality Kitchen/Breakfast with Utility
- High Specification Build Throughout

Find us on  



COUNCIL TAX BAND

Tax band

TENURE

Freehold

LOCAL AUTHORITY

Uttlesford District Council

Agents Note: Whilst every care has been taken to prepare these sales particulars, they are for guidance purposes only. All measurements are approximate and whilst every care has been taken to ensure their accuracy, they should not be relied upon and potential buyers are advised to recheck the measurements

%epcGraph_c_1_239%



4 Stortford Road, Dunmow, Essex, CM6 1DA

01371 876678

info@jamesandco.net

www.jamesandco.net

