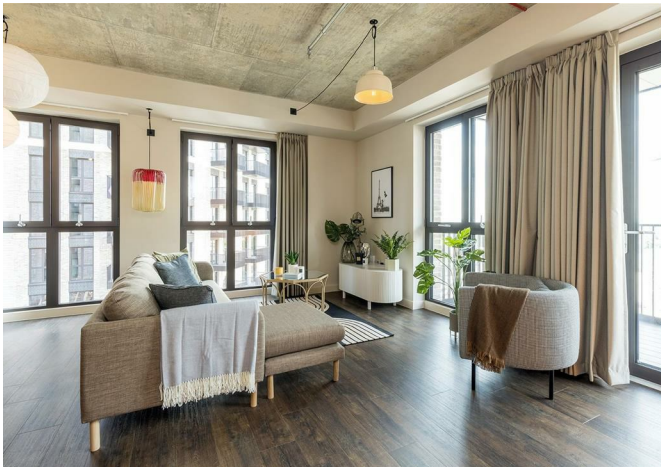




654333 The Robinson, Atlantic Crescent, Wembley, HA9 0TQ
£3,736 Per month



654333 The Robinson, Atlantic Crescent, Wembley, HA9 0TQ

£3,736 Per month

Limited-Time Offer - up to 16% off. Located in The Robinson, where bold art deco style meets vintage charm, residents enjoy a large podium garden, 360° roof terrace with the longest sun loungers in London, a spacious lounge, and co-working spaces designed for all-day comfort.

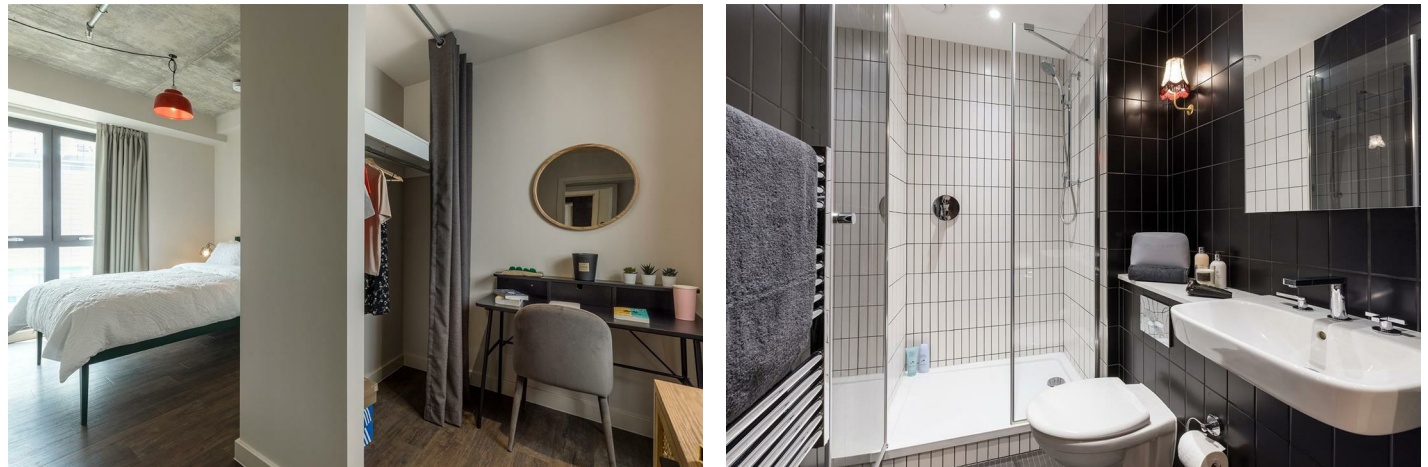
The Robinson is different. Bold and alternative, its interiors combine a range of subtle design influences from different periods meaning apartments have an eclectic style - contemporary, mid-century, art deco and retro kitsch. Social spaces are inspired by British popular culture, from the fantastic Festival Gardens, the resident lounge (ideal for working from home) and three stunning roof terraces.

Elevated above the buzz of Wembley Park, The Robinson offers a peaceful yet connected lifestyle in one of London's most vibrant new districts - just moments from Bread Ahead, Boypark, Troubadour Theatre and over 70 shops, cafés and restaurants at the London Designer Outlet. Managed by Quintain Living, the award-winning team behind Wembley Park. Photos show a very similar apartment in this building however the exact layout/floor/view may vary. Other incentives available T&Cs apply; see Quintain Living website for details. Price before offer: £3881.

Description



Situation

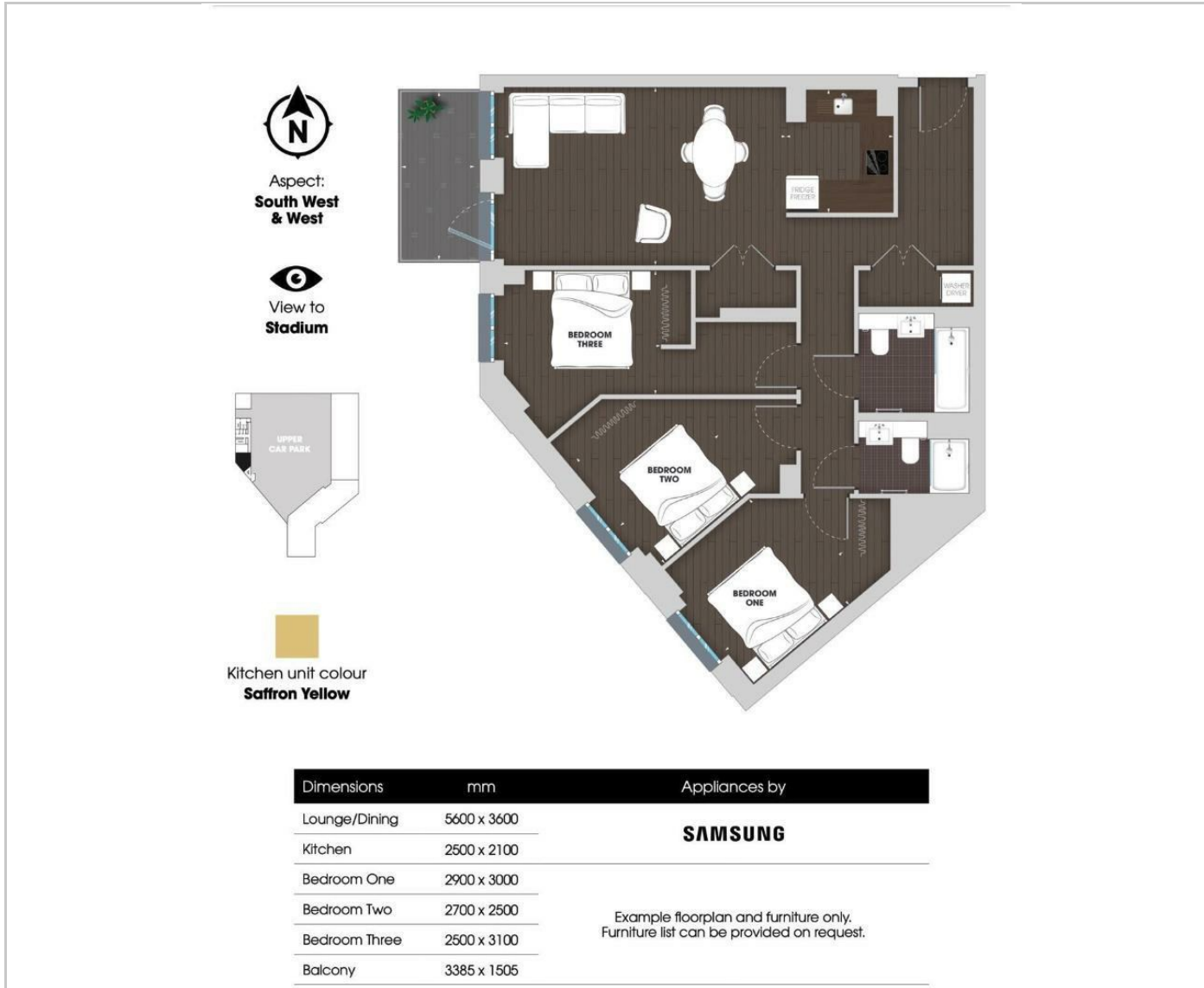


Furnished

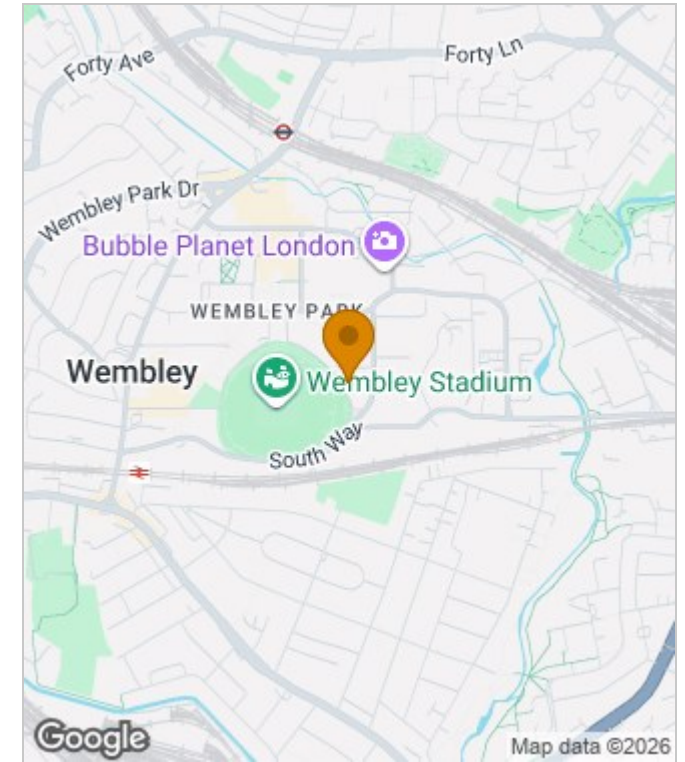
Council Tax Band: C

Available:

Floor Plans



Area Map



Energy Performance Graph



These particulars, whilst believed to be accurate are set out as a general outline only for guidance and do not constitute any part of an offer or contract. Intending purchasers should not rely on them as statements of representation of fact, but must satisfy themselves by inspection or otherwise as to their accuracy. No person in this firm's employment has the authority to make or give any representation or warranty in respect of the property.