



ALLFARTHING LANE, SW18

£425,000

- Three double bedrooms
- Good condition
- Sought after location
- No onward chain
- Separate lounge and kitchen
- Energy rating: C





## ABOUT THE HOME

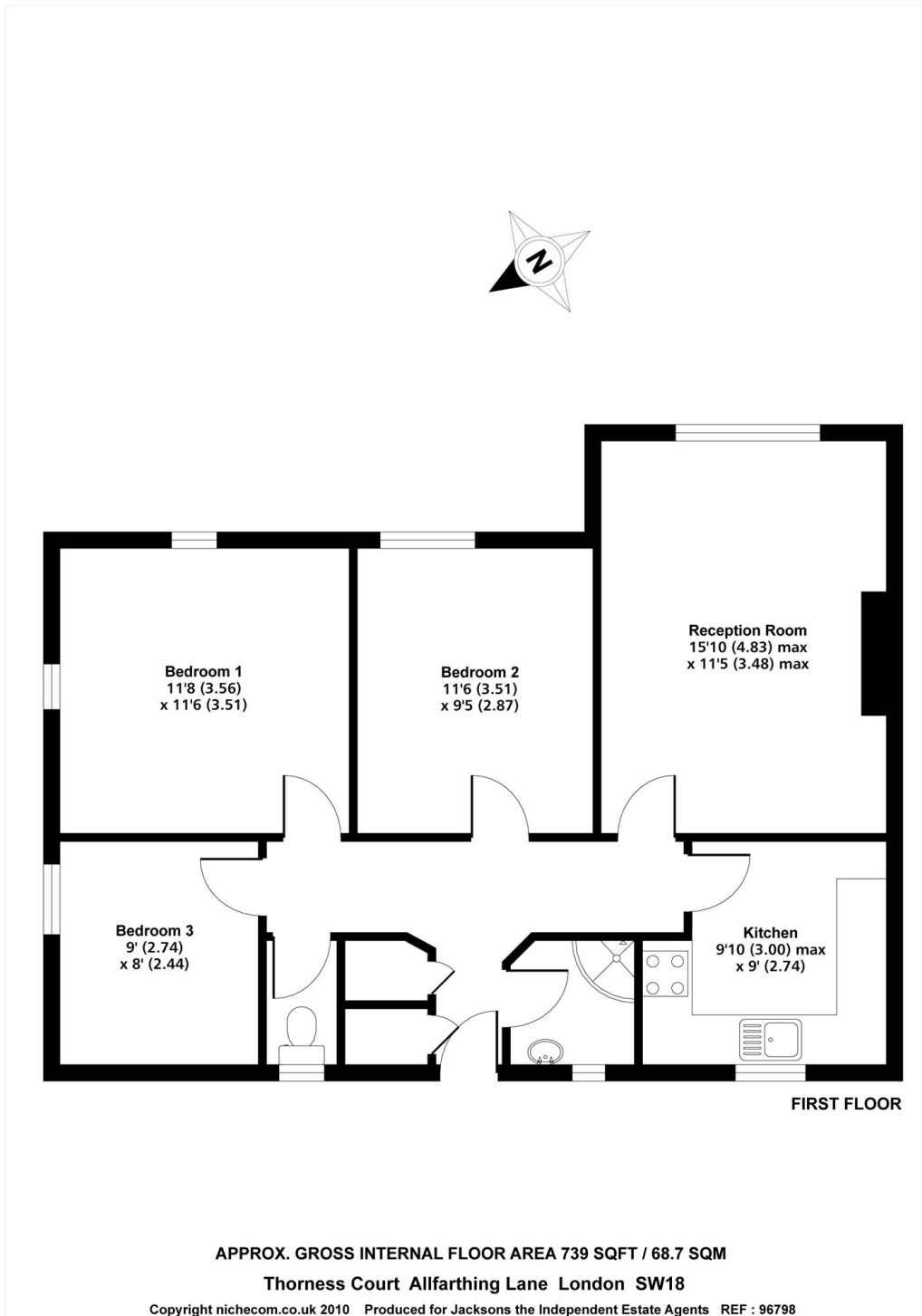
A spacious and well-proportioned three double bedroom apartment, offered to the market with no onward chain.

The property features a generous entrance hall with fitted storage cupboards, leading to a bright and airy reception room with ample space for both living and dining. There is a separate kitchen along with three well-sized double bedrooms. A spacious bathroom completes the accommodation. Overall, the apartment offers generous living space, a practical layout, and excellent potential throughout.

Thorness Court is located in close proximity to Southside shopping complex, with its array of high street shops, restaurants, multiplex cinema and a gym. Wandsworth Town and Earlsfield mainline stations are both within close proximity of the property, providing direct links to the City, the West End and outer London. King George's Park with its tennis courts, pond and playing fields is just moments away.







**JACKSONS WANDSWORTH**

507 Old York Road, London,  
SW18 1TF  
Sales: 020 8875 8890  
Lettings: 020 8875 8899

Energy Rating: C We aim to make our particulars both accurate and reliable. However they are not guaranteed; nor do they form part of an offer or contract. If you require clarification on any points then please contact us, especially if you're traveling some distance to view. Please note that appliances and heating systems have not been tested and therefore no warranties can be given as to their good working order.